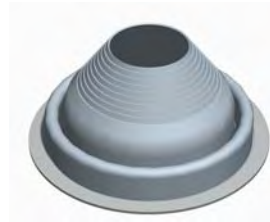




RoofScreen Mfg.
347 Coral Street
Santa Cruz, CA 95060
Phone: 866.766.3727
Fax: 866.253.0738
www.roofscreen.com



Flexible Rubber Flashing

When installing the RoofScreen Base Supports over metal roofing, a flexible rubber flashing boot can be an effective way to do the waterproofing.

The metal roofing should be cut out slightly larger than the size of the Base Support to ensure the metal roofing can expand and contract freely. The Base Support should be fastened to the structural member below, according to specifications set forth by a licensed structural engineer.

The rubber flashing is cut to the proper size to allow it to fit tightly over the Base Support. The base of the flashing should be installed according to the manufacturer's instructions.

There are several manufacturers of these types of rubber flashings. The following pages are specific to one produced by ITW Buildex, with the brand name Dektite.

DEKTITE® AND RETROFIT DEKTITE Pipe Flashings

The original flexible pipe flashing system with a 20 year warranty.



Applications

- Plumbing, Heating, Air Conditioning, Electrical and Exhaust Vents.

Product Features

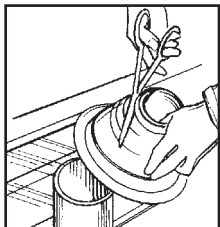
- Made of long life, flexible, weatherproof gray EPDM rubber or red silicone.
- Flexible, corrosion resistant aluminum base conforms to any panel configuration.
- EPDM and silicone will not crack or break.
- Pipe diameter markings are clearly indicated for accurate fitting.
- Designed for 1/4" to 24" diameter pipes.
- One piece construction is easy to install.
- Pleated cone adjusts to any roof pitch and allows for complete flexibility.
- EPDM has a continuous service temperature range of -65°F to +250°F.
- Silicone has a continuous service temperature range of -40°F to +350°F.
- Proven resistance to ozone and ultra-violet light.

Product Specifications

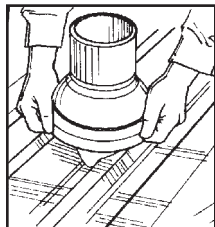
Pipe Diameter Ranges..... 1/4" to 24" - Dektite
 3/4" to 10" - Retrofit Dektite
 1/4" to 18" - Silicone

Materials..... EPDM - Standard and Retrofit
 Silicone - High Temperature

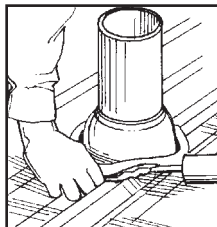
Dektite Installation Guidelines



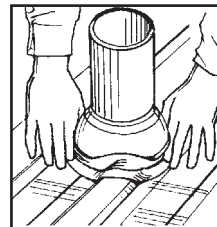
STEP 1: Cut Dektite at appropriate pipe diameter marking.



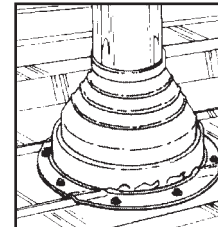
STEP 2: Slide Dektite flashing down over pipe.



STEP 3: Apply sealant on underside of flexible aluminum base.



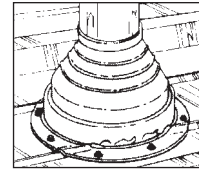
STEP 4: Press Dektite base into contours of panel configuration.



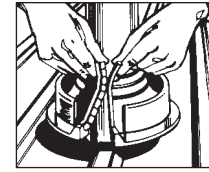
STEP 5: Fasten Dektite to surface with Buildex SCOTS self-drilling fasteners. Apply additional sealant around base if desired.

- Notes:**
- Dektite can be installed over or between the ribs of standard panels.
 - **DO NOT** install over SSR or architectural panel ribs.
 - Generally no sealant is required where the Dektite collar provides a compression fit around the pipe. However, some metal pipes and flues include a seam which may require a local application of sealant at the point where the Dektite collar crosses the seam.

Dektite Flashing Guide					
Part Number	Description	Pipe Outside Diameter	Dektite Base Diameter	Dektite Height	Box Quantity
4001910	Mini	1/4"-1-1/8"	3-1/2"	1-3/4"	20
4003910	1	1/4"-2"	4-3/4"	3"	10
4004910	2	1-3/4"-3-1/4"	6-1/4"	4"	10
4009910	3	1/4"-5"	7-3/4"	4"	10
4035910	#3 Silicone				
4011910	4	3"-6"	9-1/4"	5"	10
4016910	5	4"-7"	10-3/4"	5"	5
4036910	#5 Silicone				
4018910	6	5"-9"	12-1/2"	6"	5
4020910	7	6"-11"	14-1/2"	6"	5
4025910	8	7"-13"	16-1/2"	6"	5
4038910	#8 Silicone				
4028910	9	10"-18"	25-3/8"	8"	2
4039910	#9 Silicone				



Standard Dektite



Retrofit Dektite

Retrofit Dektite Selector Guide					
Part Number	Dektite Size Number	Pipe Outside Diameter	Dektite Base Diameter	Dektite Height	Box Qty
4029910	801	3/4"-2-3/4"	6-3/10"	3-1/2"	10
4030910	802	2"-7-1/4"	10-3/4"	5-3/5"	5
4031910	803	3-1/4"-10"	14-1/2"	5-4/5"	5

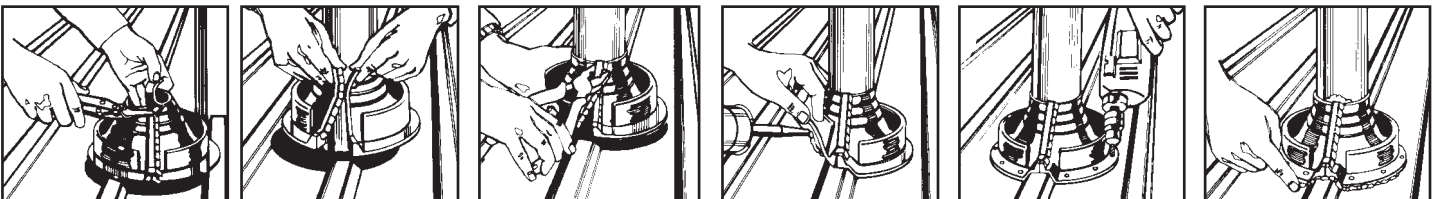
Note: When used on roofs where pitch is steeper than 20 degrees, or when used on deep ribbed profile roof panel (1-1/2" deep corrugation or more), consider using next larger size Dektite that will accommodate the same pipe diameter. **Recommended Sealant:** Chemseco Sikaflex® sealant, part number 4040910. **Recommended Fastener:** 1/4-14 x 1-1/8" Scots® Tek's®/1, part number 1175153.

Performance Data

ASTM Method	Test Description	Specification	Test Results
D412	Tensile Strength (min. psi rating)	1450 psi min.	1537 psi
D412	Ultimate Elongation (%)	350 min.	535
D1171	Resistance to Ozone-min. rating	100 (no cracks)	Passed
D673	Heat Aging - 70 hrs. at 212°F		
	• Change in Hardness (points)	± 15 max.	+8
	• Change in Tensile Strength (%)	± 30 max.	-4.7
	• Change in Elongation (%)	± 50 max.	-26

ASTM Method	Test Description	Specification	Test Results
D2137	Low Temperature Brittleness-3 mins. at -40°F	Non-brittle	Passed
D624	Tear Resistance Die C (min.) per inch of width min.	125 pounds per inch of width	130 pounds
U.L. 94	Flame Resistance	U.L. 94 H.B.	Passed

Retrofit Dektite Installation Guidelines



STEP 1: Begin cutting opposite of the mechanical locking jointer. Cut through the jointer with tin snips.

STEP 2: Wrap Retrofit Dektite around the pipe. Engage the top section of the jointer first, then proceed down until jointer is completely engaged.

STEP 3: Crimp jointer tightly, starting at the top by squeezing jointer "fingers" with pliers.

STEP 4: Apply sealant to the underside of the ribbed aluminum base. Press Retrofit Dektite against contours of the panel configuration.

STEP 5: Attach Retrofit Dektite to the panel with SCOTS® self-drilling screws. Screws should be spaced as necessary to avoid gaps between the base and the panel.

STEP 6: Apply additional sealant around the top of the Dektite, near the mechanical locking jointer seam.

Recommended Sealant: Chemseco Sikaflex® sealant, part number 4040910.



1349 West Bryn Mawr Avenue
Itasca, Illinois 60143
630-595-3500 Fax: 630-595-3549
www.itwbuildex.com

Scots® is a trademark of ITW Buildex and Illinois Tool Works, Inc. Dektite® and Retrofit Dektite® are registered trademarks of Deks Industries. Sikaflex® is a registered trademark of Chemseco Corporation.



Building Ideas That Work

USE OF DEKTITE FOR FLASHING SQUARE SECTION PIPES

Dektite can be used for flashing square pipes. However, there are limitations which require additional installation procedures.

In a square cross sectional pipe, most of the tension is taken at the four corners of the square. The rest of the sealing edge along the sides of the square tends to "bag" or hang loose. Where it has contact, this contact is only knife edged. In other words a continuous upstand of sealing up does not occur. In order to overcome this it is recommended that an external band of aluminum, approximately 3/4" wide, be fitted around top of the Dektite. After sealing between pipe and Dektite with Sikaflex 201 sealant, fasten the band through Dektite into pipe with Scots self-drilling fasteners. Use your best judgement. If the connections don't need a 3/4" band, use only sealant at the top of the Dektite. Also the 3/4" band should only be used on 3" or above square pipe.

The size of Dektite used will be governed by the dimension across diagonals of the square. This dimension must not exceed actual diameter of bottom cut line on Dektite being considered. Square ducting larger than 10" should be flashed with 16"-24" Diverter Dektite.

In order to find equivalent pipe diameter when given square pipe size, use formula $D=1.273s$.

Where D = Equivalent diameter.
 s = Length of one side of square.

It is always preferable to cut on small side of pipe range to allow for discrepancies in ducts and ensure good fit. Therefore, the following solution guide should be used:

DEKTITE FOR SQUARE CROSS SECTION PIPE

Square size	Dektite size	Cut at
** 1"	#1	1-1/4"
** 2"	#2	2-1/2"
3"	#3	3-3/4"
4"	#4	5"
5"	#5	6-1/4"
6"	#6	7-1/2"
7"	#7	8-3/4"
8"	#8	10"
9"	#8	11-1/4"
10"	#9	12-1/2"