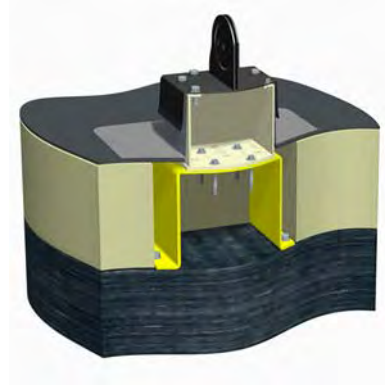
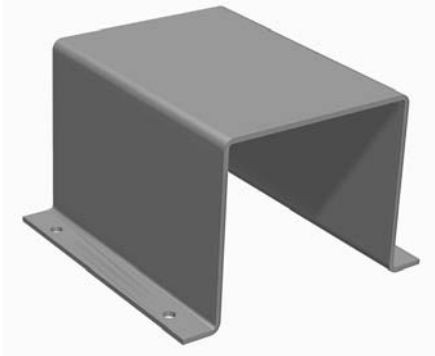




RoofScreen Mfg.
347 Coral Street
Santa Cruz, CA 95060
Phone: 866.766.3727
Fax: 866.253.0738
www.roofscreen.com



Spacer Hat Bulletin

Description:

The Spacer Hat is designed to raise the Base Support to extend through roof insulation. The tallest Base Support available is 12" tall, so when the roof insulation is more than 7" or 8" thick, a Spacer Hat is necessary to raise the Base Support up high enough for proper flashing and roofing.

Components:

- Bent Plate: ASTM A36 1/8" to 1/4" thick
- Sizes: Customized by project
- Tek screws: #14 x 1 1/4" self drilling, up to (4) per Base Support into Spacer Hat

Attachment:

The typical attachment to the structure includes (4) fasteners as follows:

- Concrete Slab: Simpson Titan Anchors or equal
- Concrete over Metal Decking: Through Bolts
- Open Web Steel Joist: Self Drilling Tek 5 Screws
- Wood: Lag Bolts

LEED Information:

Structural Components/Steel
Post Consumer Recycled Content: 33%
Post Industrial Recycled Content: 0%
Manufactured: Campbell, CA

Installation:

The Spacer Hat is placed over the structural members and fastened with the appropriate type of fastener, typically (4) per Spacer Hat.

The Base Support is fastened to the top of the Spacer Hat with Self Drilling Tek Screws, typically (4) per Base Support.

It is recommended to fill the void under the Spacer Hat with insulation to prevent condensation.

--