

Monumental color and protection



Architectural Powder Coatings Color Guide



We protect and beautify the world™

Architectural Powder Coatings Color Guide



A full line of tough, durable and colorful architectural extrusion and panel coatings

PPG’s full line of advanced powder coatings offer a combination of performance and value for virtually any architectural application. PPG makes four brands of architectural powder coatings that, together, cover all three major AAMA performance specifications for architectural coatings.

	ENVIROCRON® 03	Envirocron 04	CORAFLON® Powder	DURANAR® Powder
AAMA Specification	AAMA 2603	AAMA 2604	AAMA 2605	AAMA 2605
Resin Quality	Standard Polyester	Ultra-Durable Polyester	FEVE Fluoropolymer	PVDF Fluoropolymer
Coating Layers*	One coat	One or two coats	One or two coats	Two coats
Seacoast Coverage	No	Yes, with primer	Yes, with primer	Yes
	Low, Medium, High	Low, Medium, High	20-70	20-30
Appearance	Solids, Mica, Metallic	Solids, Mica, Metallic	Solids, Mica	Solids

* Coraflon and Envirocron coatings are available with liquid and powder primers for severe environments.

Envirocron 03 Durable Polyester Powder

With a durable polyester formulation that meets AAMA 2603 specifications, *Envirocron* 03 powder coatings are available in a broad range of solid colors, mica and metallic pigments, and textured finishes, making them ideal for aluminum residential window and door frames, railings, trim, and interior applications. The coatings provide good film integrity, impact and mar resistance, and color control.

Envirocron 04 Ultra-Durable Polyester Powder

Envirocron 04 ultra-durable powder coatings use a more robust resin and pigment system than *Envirocron* 03 coatings, meeting AAMA 2604 specifications in a wide range of colors, glosses, and mica and metallic effects. The added durability makes them an excellent choice for high-end residential and light commercial buildings with high-traffic environments.

Coraflon FEVE Fluoropolymer Powder

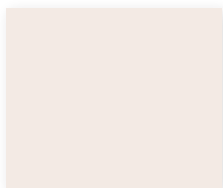
Coraflon powder coatings are formulated to provide exceptional UV durability, colorfastness, and gloss retention. Available in satin and high-luster glosses, including solids and micas, *Coraflon* powder coatings have the unique ability to adhere directly to metal as a one-coat paint system or as a two-coat system with a primer for harsh environments. *Coraflon* coatings make an excellent choice for curtain walls, storefronts, and other highly visible, high-end monumental applications.

Duranar 70% PVDF Fluoropolymer Powder

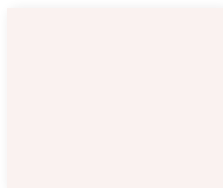
The renowned *Duranar* line of coatings are now available in a powder formulation, offering unparalleled resilience on storefronts, curtain walls, windows and louvers in a wide range of earth-tone solid colors. Our highest performing product always utilizes a liquid or powder primer, making it the best choice for severe seacoast environments. The coating is chemically inert, offering exceptional resistance to chemical attack and surface damage caused by acid rain, salt, mortar deposits, humidity, and graffiti – all while retaining color and gloss over decades of weather exposure.

CORAFLON SOLID COLORS

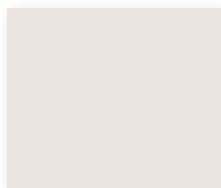
Also available for *Duranar* and *Envirocron* powder coatings.*



Bone White
PCNT88101



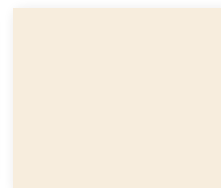
Graham White
PCNT88104



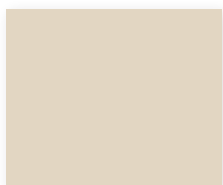
Bone White
PCNT88147



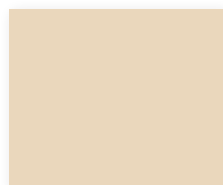
Bright White
PCNT88148



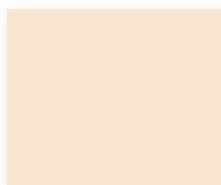
Colonial White
PCNT88149



Ivory
PCNT88150



Malt
PCNT28207



Natural Wicker
PCNT28208



Caramel Latte
PCNT28174



Sahara Sand
PCNT28209



Sandstone
PCNT28210



Beige
PCNT28102



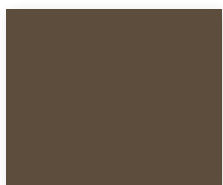
Seawolf
PCNT28211



Antique Bronze
PCNT28212



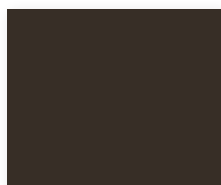
Fairview Taupe
PCNT28128



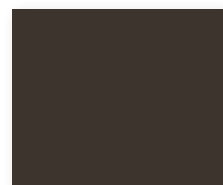
Cocoa Bean
PCNT28213



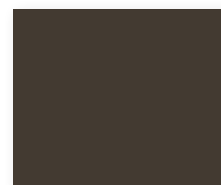
Medium Bronze
PCNT28214



Bronze
PCNT28215



Statuary Bronze
PCNT28216



Bronze
PCNT28217



Brick Red
PCNT68116



River Rouge Red
PCNT68117



Bermuda Blue
PCNT58113



Interstate Blue
PCNT59129



Interstate Green
PCNT49143



Fashion Gray
PCNT78166



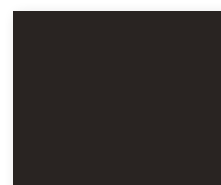
Eclipse Gray
PCNT78163



Charcoal
PCNT79121



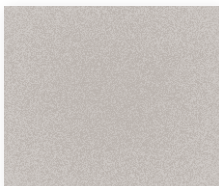
Charcoal Gray
PCNT78133



Black
PCNT98111

CORAFLO® SUNSTORM® MICA COLORS

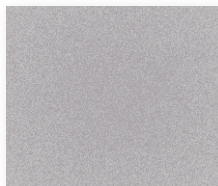
Also available for *Envirocron* powder coatings.*



Platinum
PCNT75153



White Ice Metallic
PCNT75151



Anodic Clear
PCNT75155



Champagne Metallic
PCNT75139



Gray Aluminum
PCNT75138



Bronze
PCNT75137



Light Bronze
PCNT25129



Champagne
PCNT75159



Champagne Gold
PCNT75140



Arcadia Silver
PCNT75154



Bronze
PCNT25130



Champagne Bronze
PCNT25122



Harvest Gold Pearl
PCNT25116



Medium Bronze
PCNT25118



Driftwood Mica
PCNT25120



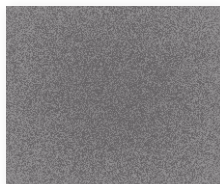
Pewter
PCNT75163



Medium Bronze
PCNT25101



Silverstorm
PCNT75164



Gray Velvet
PCNT75130



Cosmic Gray Mica
PCNT75132



Graphite Gray
PCNT75156



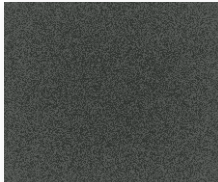
CORAFLO®N SPECIALTY COLORS

Textured and multi-color chips also available for *Duranar* and *Envirocron* powder coatings.*

TEXTURED

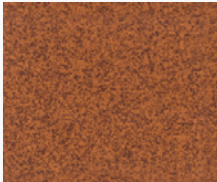


Terra Cotta Dark
PCNT39105



Black Flower Tex #5
PCNT99112

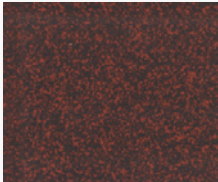
MULTI-COLOR



Orange Speckle
PCNT34100



Deep Orange Speckle
PCNT64104



Black Rust
PCNT94100

ANODIC LOOK



Champagne
PCNT25134



Light Bronze
PCNT25133



Medium Bronze
PCNT25131



Bronze
PCNT25132



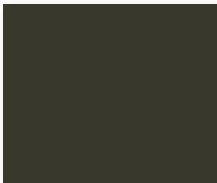
GLOSS LEVEL EXAMPLES



HIGH GLOSS



MEDIUM GLOSS



LOW GLOSS

TO ORDER SAMPLES

visit requestppg.com

or call 800-258-6398.

* The color codes for *Duranar* or *Envirocron* powder coatings will differ from what is shown. Ask your PPG representative for more information.

Color and styling services

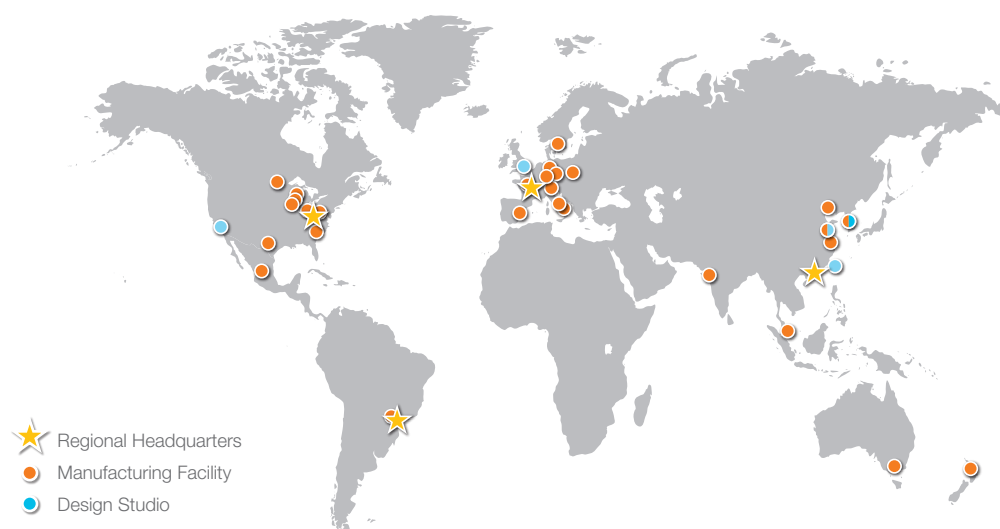
PPG has a growing inventory of over 300,000 color formulations and a global staff of color and design experts. All 60 colors on this color card are stocked and available on request.

To learn more about how to make PPG your single-source supplier of architectural powder coatings or to order color cards, literature or sample panels, please visit requestppg.com or call 800-258-6398.

A global partner

PPG is a preeminent supplier of coatings solutions. Through global leadership in innovation, sustainability and color, we help customers in the automotive, aerospace, industrial and construction segments to enhance more surfaces in more ways than any other company. Founded in 1883, PPG has its global headquarters in Pittsburgh, Pennsylvania and operates in more than 70 countries around the world.

Our global manufacturing and product development capabilities ensure that coatings can be manufactured cost-effectively and consistently almost anywhere in the world. We have strategic locations throughout North America, South America, Europe and the Asia/Pacific region, each staffed with knowledgeable sales, technical and manufacturing personnel trained in multiple coating technologies.



PPG Regional Headquarters

PPG Global Headquarters/
PPG North America
Pittsburgh, PA USA
1.888.774.2001

PPG South America
Sumare, Sao Paulo, Brazil
+ 55.19.3864.6000

PPG Europe
Rolle, Switzerland
+ 41.21.822.3000

PPG Asia Pacific
Hong Kong, China
+ 852.2860.4500



TO ORDER SAMPLES visit requestppg.com or call 1-800-258-6398.

Custom colors may be ordered on request.

ABOUT THE PHOTOS

Norman Y. Mineta San Jose International Airport

San Jose, CA
Duramar Regal White Powder Coatings

The Tower at PNC Plaza

Pittsburgh, PA
Coraflon Sunstorm Powder Coating

Photos of The Tower at PNC Plaza courtesy of Tom Cwenar.

The color chips in this brochure cannot be considered totally accurate color matches, and are not to be used as approved standards. This document contains general information only and should not be construed as creating any warranties, express or implied. Please contact a PPG representative for additional information. *Coraflon*, *Duramar*, *Envirocron*, *Sunstorm* and the PPG logo are registered trademarks. *We protect and beautify the world* is a trademark of PPG Industries Ohio, Inc.

©2017 PPG Industries, Inc. All rights reserved. 04/17 PPG-17

IFS Powder Coatings

Architectural Color Collection



IFS Coatings for Architectural Applications

IFS has a world class range of powder coatings designed to protect and decorate architectural metal to the very highest standards. Our architectural powder coatings are tough, weatherable, and meet and exceed each of the AAMA performance specifications, ensuring every level of exterior durability is available.

The Architectural Color Palette

The IFS Architectural Color Collection showcases just some of the colors available in the IFS range, from classic solid shades, to fine metallics and even anodic styles. We also understand that unique projects need unique colors. With that in mind, the **IFS Color Matching Service** allows you to get the exact shade you are looking for in an environmentally responsible, durable coating. We will analyze the shade using the latest color matching technology and create a color for you to approve. What's more, you can also change the gloss, or add metallic or textures to the product. Talk to your IFS architectural representative for more information on our exceptional color matching capabilities.

The IFS Architectural Color Matching Service

- Custom color creation available
- Available in standard polyester, super durable and fluoropolymer technology
- Change the gloss, add metallics or textures
- Industry leading color matching times
- Sample panels available free of charge
- Small batches available, perfect for prototypes or one off pieces



With any coating, powder or liquid, there are some limitations on what is achievable at the higher levels of exterior durability. Quite simply, the pigments for some shades (for example, bright yellow) that will offer the durability required for these specifications, are not available. However there is a vast range of colors that are available, and will meet the exterior durability demands of the high level specifications. Similarly, not all gloss levels or metallic effects can be achieved at an AAMA 2605 level. Talk to your IFS architectural advisor for advice.

AAMA Specification	AAMA 2603	AAMA 2604	AAMA 2605
IFS Product	IFS 300SP	IFS 400SD	IFS 500FP
Product chemistry	Standard Polyester	Super Durable Polyester	100% FEVE Fluoropolymer (70% PVDF liquid equivalent)
Warranty*	No warranty	5 or 10 year warranty	10 or 20 year warranty

*Warranty supplied when applied by an IFS Certified Applicator to aluminum.

The IFS architectural range has been used on a vast array of architectural applications, from residential windows and doors, commercial store front and retail interiors, to curtain wall, louvers, scrims and screens on skyscrapers and monumental buildings.

The IFS Architectural Color Collection

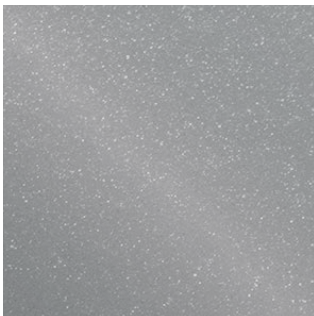
IFS architectural coatings offer a combination of great aesthetics, toughness, durability, cost effectiveness and are the obvious environmentally responsible choice. All of the colors shown on this card are available in AAMA 2603, 2604 and 2605 level products, so no matter what the project demands, we've got you covered. IFS 400SD, our super durable architectural product provides great exterior protection and improved color and gloss retention over a standard polyester product, while IFS 500FP, our world class Fluoropolymer offers the ultimate in long term durability, color and gloss retention and scratch resistance. For more information on the strict performance tests that IFS 400SD and IFS 500FP meet and exceed, please talk to your IFS representative.

Codes starting with "S" are AAMA 2604 compliant, IFS 400SD product codes.
Codes starting with "F" are AAMA 2605 compliant, IFS 500FP product codes.

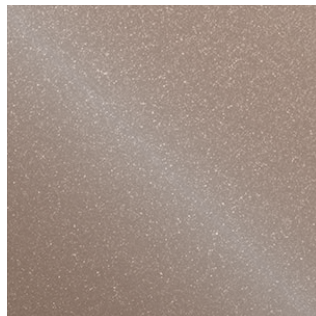
TGIC-free products also available. Please ask for details.



IFS ARCHITECTURAL METALLICS



Classic Platinum
SRSS 95565
FRSL 96595



Champagne
SRSL 95566
FRSL 96596



Pewter
SRSL 95567
FRSL 96597



Cosmic Gray
SRSL 95568
FRSL 96598



Light Bronze
SRSL 95569
FRSL 96599



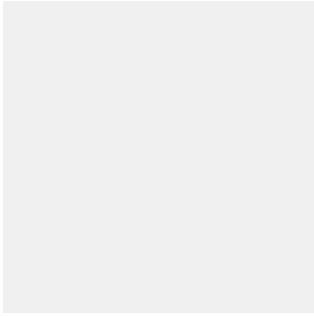
Copper
SRSS 90408
FRSL 96600



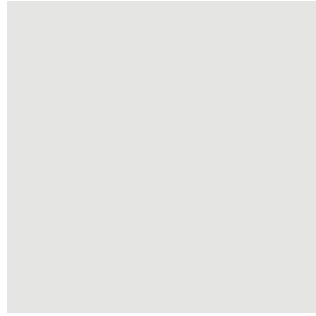
Gold Nugget
SRSS 90464
FRSL 95571

Colors are a digital representation only and are not a true reflection of the actual powder coated surface. In addition screens are not calibrated, so colors appear differently. DO NOT choose a color based on an online representation. Ask for a free color card or sample.

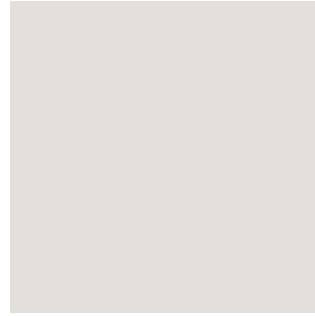
IFS ARCHITECTURAL SOLIDS



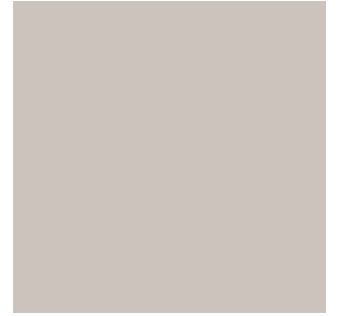
Apollo White
SRSL 82519
FRSL 82908



Bone White
SRSL 82520
FRSL 82909



Ivory
SRSL 45891
FRSL 46646



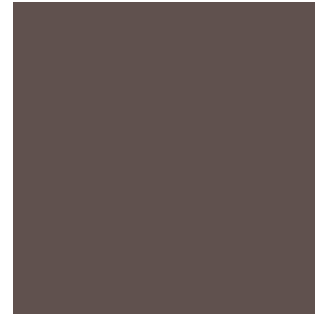
Sandstone
SRSL 45892
FRSL 46647



Seawolf
SRSL 46636
FRSL 46645



Fashion Gray
SRSL 74008
FRSL 74652



Colonial Gray
SRSL 74009
FRSL 74653



Military Light Blue
SRSL 21708
FRSL 21709



Burgundy
SRSL 62487
FRSL 62496



Antique Bronze
SRSL 45893
FRSL 46648



Black
SRSL 11386
FRSL 11390



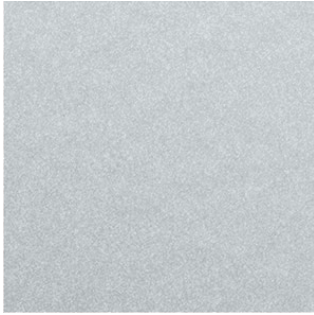
Charcoal
SRSL 74007
FRSL 74654



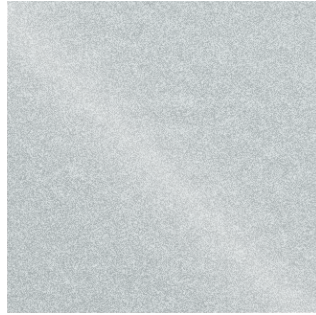
Hartford Green
SRSL 32545
FRSL 32872

Colors are a digital representation only and are not a true reflection of the actual powder coated surface. In addition screens are not calibrated, so colors appear differently. DO NOT choose a color based on an online representation. Ask for a free color card or sample.

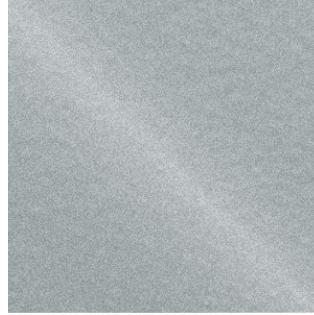
IFS ARCHITECTURAL ANODICS



Anodized Silver
SRMS 95339
FRSL 94542



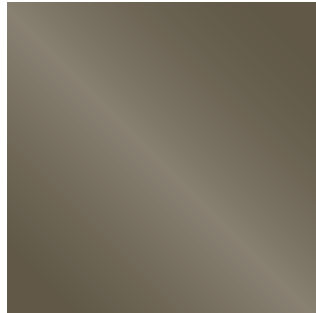
Silver Sparkle
SRSL 95572
FRSL 93652



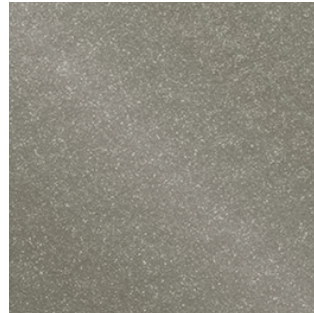
Matte Platinum
SRSM 95573
FRML 95458



Steel Blue
SRSL 95574
FRSL 95577



Dark Bronze
SRSL 95575
FRSL 95578



Medium Bronze
SRSL 95576
FRSL 95579



Codes starting with “S” are AAMA 2604 compliant, Fluoropolymer IFS 400SD product codes.
Codes starting with “F” are AAMA 2605 compliant, Fluoropolymer IFS 500FP product codes.

Colors are a digital representation only and are not a true reflection of the actual powder coated surface. In addition screens are not calibrated, so colors appear differently. DO NOT choose a color based on an online representation. Ask for a free color card or sample.



3601 N. Interstate 35

Gainesville, TX 76240

P: 940 668 1062

www.ifscoatings.com

Any recommendations contained herein or any information given by any IFS Coatings representative is based on tests and information believed to be accurate. However, since we have no control over the conditions under which our products are transported, stored, handled or used by purchasers, all recommendations and sales are made on condition that IFS Coatings will not be held responsible for any damages resulting from their use. No representative of ours has any authority to waive or change this provision.

© IFS Coatings 2020