

Monumental color and protection



Architectural Powder Coatings Color Guide



We protect and beautify the world™

Architectural Powder Coatings Color Guide



A full line of tough, durable and colorful architectural extrusion and panel coatings

PPG's full line of advanced powder coatings offer a combination of performance and value for virtually any architectural application. PPG makes four brands of architectural powder coatings that, together, cover all three major AAMA performance specifications for architectural coatings.

	ENVIROCRON® 03	Envirocron 04	CORAFLO® Powder	DURANAR® Powder
AAMA Specification	AAMA 2603	AAMA 2604	AAMA 2605	AAMA 2605
Resin Quality	Standard Polyester	Ultra-Durable Polyester	FEVE Fluoropolymer	PVDF Fluoropolymer
Coating Layers*	One coat	One or two coats	One or two coats	Two coats
Seacoast Coverage	No	Yes, with primer	Yes, with primer	Yes
	Low, Medium, High	Low, Medium, High	20-70	20-30
Appearance	Solids, Mica, Metallic	Solids, Mica, Metallic	Solids, Mica	Solids

* Coraflo and Envirocron coatings are available with liquid and powder primers for severe environments.

Envirocron 03 Durable Polyester Powder

With a durable polyester formulation that meets AAMA 2603 specifications, *Envirocron 03* powder coatings are available in a broad range of solid colors, mica and metallic pigments, and textured finishes, making them ideal for aluminum residential window and door frames, railings, trim, and interior applications. The coatings provide good film integrity, impact and mar resistance, and color control.

Envirocron 04 Ultra-Durable Polyester Powder

Envirocron 04 ultra-durable powder coatings use a more robust resin and pigment system than *Envirocron 03* coatings, meeting AAMA 2604 specifications in a wide range of colors, glosses, and mica and metallic effects. The added durability makes them an excellent choice for high-end residential and light commercial buildings with high-traffic environments.

Coraflo FEVE Fluoropolymer Powder

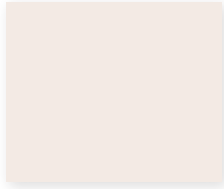
Coraflo powder coatings are formulated to provide exceptional UV durability, colorfastness, and gloss retention. Available in satin and high-luster glosses, including solids and micas, *Coraflo* powder coatings have the unique ability to adhere directly to metal as a one-coat paint system or as a two-coat system with a primer for harsh environments. *Coraflo* coatings make an excellent choice for curtain walls, storefronts, and other highly visible, high-end monumental applications.

Duranar 70% PVDF Fluoropolymer Powder

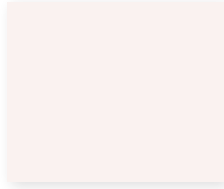
The renowned *Duranar* line of coatings are now available in a powder formulation, offering unparalleled resilience on storefronts, curtain walls, windows and louvers in a wide range of earth-tone solid colors. Our highest performing product always utilizes a liquid or powder primer, making it the best choice for severe seacoast environments. The coating is chemically inert, offering exceptional resistance to chemical attack and surface damage caused by acid rain, salt, mortar deposits, humidity, and graffiti – all while retaining color and gloss over decades of weather exposure.

CORAFLOX SOLID COLORS

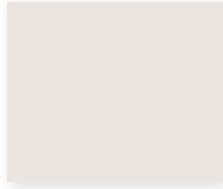
Also available for *Duranar* and *Envirocron* powder coatings.*



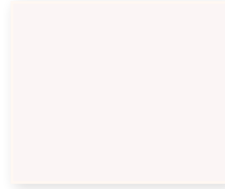
Bone White
PCNT88101



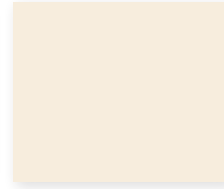
Graham White
PCNT88104



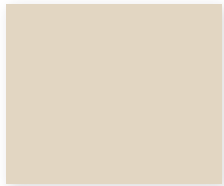
Bone White
PCNT88147



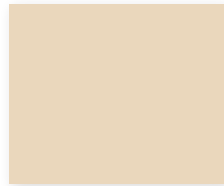
Bright White
PCNT88148



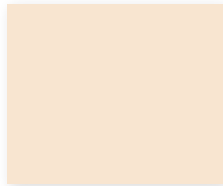
Colonial White
PCNT88149



Ivory
PCNT88150



Malt
PCNT28207



Natural Wicker
PCNT28208



Caramel Latte
PCNT28174



Sahara Sand
PCNT28209



Sandstone
PCNT28210



Beige
PCNT28102



Seawolf
PCNT28211



Antique Bronze
PCNT28212



Fairview Taupe
PCNT28128



Cocoa Bean
PCNT28213



Medium Bronze
PCNT28214



Bronze
PCNT28215



Statuary Bronze
PCNT28216



Bronze
PCNT28217



Brick Red
PCNT68116



River Rouge Red
PCNT68117



Bermuda Blue
PCNT58113



Interstate Blue
PCNT59129



Interstate Green
PCNT49113



Fashion Gray
PCNT78166



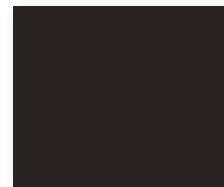
Eclipse Gray
PCNT78163



Charcoal
PCNT79121



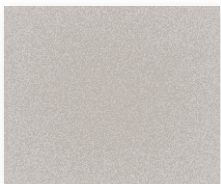
Charcoal Gray
PCNT78133



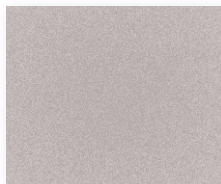
Black
PCNT98111

CORAFLO SUNSTORM® MICA COLORS

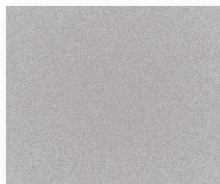
Also available for *Envirocron* powder coatings.*



Platinum
PCNT75153



White Ice Metallic
PCNT75151



Anodic Clear
PCNT75155



Champagne Metallic
PCNT75139



Gray Aluminum
PCNT75138



Bronze
PCNT75137



Light Bronze
PCNT25129



Champagne
PCNT75159



Champagne Gold
PCNT75140



Arcadia Silver
PCNT75154



Bronze
PCNT25130



Champagne Bronze
PCNT25122



Harvest Gold Pearl
PCNT25116



Medium Bronze
PCNT25118



Driftwood Mica
PCNT25120



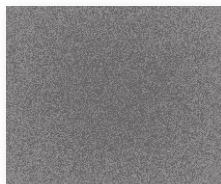
Pewter
PCNT75163



Medium Bronze
PCNT25101



Silverstorm
PCNT75164



Gray Velvet
PCNT75130



Cosmic Gray Mica
PCNT75132



Graphite Gray
PCNT75156



CORAFLOX SPECIALTY COLORS

Textured and multi-color chips also available for *Duranar* and *Envirocron* powder coatings.*

TEXTURED



Terra Cotta Dark
PCNT39105

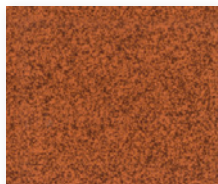


Black Flower Tex #5
PCNT99112

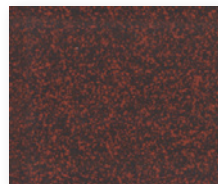
MULTI-COLOR



Orange Speckle
PCNT34100



Deep Orange Speckle
PCNT64104



Black Rust
PCNT94100

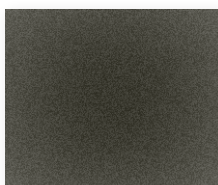
ANODIC LOOK



Champagne
PCNT25134



Light Bronze
PCNT25133



Medium Bronze
PCNT25131



Bronze
PCNT25132



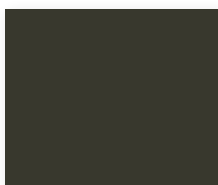
GLOSS LEVEL EXAMPLES



HIGH GLOSS



MEDIUM GLOSS



LOW GLOSS

TO ORDER SAMPLES
visit requestppg.com
or call 800-258-6398.

*The color codes for *Duranar* or *Envirocron* powder coatings will differ from what is shown. Ask your PPG representative for more information.

Color and styling services

PPG has a growing inventory of over 300,000 color formulations and a global staff of color and design experts. All 60 colors on this color card are stocked and available on request.

To learn more about how to make PPG your single-source supplier of architectural powder coatings or to order color cards, literature or sample panels, please visit requestppg.com or call 800-258-6398.

A global partner

PPG is a preeminent supplier of coatings solutions. Through global leadership in innovation, sustainability and color, we help customers in the automotive, aerospace, industrial and construction segments to enhance more surfaces in more ways than any other company. Founded in 1883, PPG has its global headquarters in Pittsburgh, Pennsylvania and operates in more than 70 countries around the world.

Our global manufacturing and product development capabilities ensure that coatings can be manufactured cost-effectively and consistently almost anywhere in the world. We have strategic locations throughout North America, South America, Europe and the Asia/Pacific region, each staffed with knowledgeable sales, technical and manufacturing personnel trained in multiple coating technologies.



PPG Regional Headquarters

PPG Global Headquarters/
PPG North America
Pittsburgh, PA USA
1.888.774.2001

PPG South America
Sumare, Sao Paulo, Brazil
+ 55.19.3864.6000

PPG Europe
Rolle, Switzerland
+ 41.21.822.3000

PPG Asia Pacific
Hong Kong, China
+ 852.2860.4500

TO ORDER SAMPLES visit requestppg.com or call 1-800-258-6398.

Custom colors may be ordered on request.

ABOUT THE PHOTOS

Norman Y. Mineta San Jose International Airport

San Jose, CA
Duramar Regal White Powder Coatings

The Tower at PNC Plaza

Pittsburgh, PA
Corafon Sunstorm Powder Coating

Photos of The Tower at PNC Plaza courtesy of Tom Cwenar.

The color chips in this brochure cannot be considered totally accurate color matches, and are not to be used as approved standards. This document contains general information only and should not be construed as creating any warranties, express or implied. Please contact a PPG representative for additional information. *Corafon*, *Duramar*, *Envirocron*, *Sunstorm* and the PPG logo are registered trademarks. *We protect and beautify the world* is a trademark of PPG Industries Ohio, Inc.

©2017 PPG Industries, Inc. All rights reserved. 04/17 PPG-17



POWDURA® 5000 COATING SYSTEM

Durability and weather resistance are non-negotiable when specifying powder coatings on your metal building products. That's why Powdura® 5000 coatings are formulated to provide a durable finish with outstanding UV resistance, ensuring your structure withstands the harsh environments it faces for years to come.

Powdura 5000 coatings are designed to meet or exceed AAMA 2605 specifications, providing excellent gloss retention and resistance to chalking and color fade for metal building products.

POWDURA® 5000
COATINGS COLOR GUIDE



SHERWIN-WILLIAMS

oem.sherwin.com
coil.sherwin.com



SHERWIN-WILLIAMS

© 2019 The Sherwin-Williams Company
GI-28-1900-001



POWDURA® ARCHITECTURAL ALUMINUM COATING SYSTEMS

Powdura® powder coating systems for exterior and interior metal building products offer the breadth and flexibility you need for your finishing requirements. Powdura coating systems possess excellent abrasion, mar, scratch, and impact resistance to withstand your harshest environments.

POWDURA® 3000

Powdura® 3000 coatings, formulated with super durable polyester resins, feature a wide range of color and gloss levels, including 188 RAL standard colors - available in both TGIC and TGIC-free formulations. Applications include: Residential and light commercial use for windows, doors, residential fencing, and railings.

POWDURA® 4000

Powdura® 4000 coatings are formulated with super durable polyester resins and solar-reflective pigments known to reduce heat build-up and leave the painted metal cool to the touch. This coating system provides excellent gloss retention and is available in TGIC and TGIC-free formulations. Applications include: Residential and non-monumental, heavy commercial use for windows, doors, fencing, railings, stairwells, handrails, louvers, skylights, indoor atrium areas, high traffic areas, and store fronts.

POWDURA® 5000

Powdura® 5000 coatings' combination of fluoropolymer resins and solar-reflective pigments defends against ultraviolet radiation, enhancing thermal stability and delivering a hard, durable finish to combat wear and tear of this one-coat system. Applications include: Residential and monumental, heavy commercial use for windows, doors, fencing, railings, louvers, skylights, curtain walls, column covers, exterior lighting fixtures, sash extrusions, entrance overhang structures, and store fronts.

	POWDURA® 3000	POWDURA® 4000	POWDURA® 5000
AAMA Spec	2603	2604	2605
Film Thickness ASTM D7091	1.8 to 3.0 mil	1.8 to 3.0 mil	1.8 to 3.0 mil
Specular Gloss at 60° ASTM D523	30-90 units	30-90 units	30-80 units
Humidity ASTM D2247	1,500 hours aluminum	3,000 hours aluminum	4,000 hours aluminum
Acid Salt Spray ASTM G85 Annex 5	N/A	N/A	2,000 hours aluminum
Salt Spray ASTM B117	2,000 hours	3,000 hours	4,000 hours
Weathering	1 year exposure, 45° South Florida	5 years exposure, 45° South Florida	10 years exposure, 45° South Florida
Fade ASTM D2244	Slight color fade	Max 5ΔE	Max 5ΔE
Chalk ASTM D4214	Chalk minimal	Chalk maximum 8 rating	Chalk maximum 8 rating on colors; maximum 6 rating on whites
Gloss ASTM D523	Slight gloss loss	Gloss > 30% retention	Gloss > 50% retention

APPROVED APPLICATOR PROGRAM

Our established audit and testing program ensures that applicators meet Sherwin-Williams specifications and those of the American Architectural Manufacturers Association (AAMA) when applying Powdura® coatings. Throughout the Approved Applicator Program's process, our technical service team works directly with applicators, assuring the highest performance and aesthetic look of your finished product.

CONTACT US

Sherwin-Williams Powdura® 5000 coatings can be matched to meet your custom color needs. For coil and extrusion-related projects, visit us at coil.sherwin.com or call (866) 351-6900. For other metal building-related projects, visit us at oem.sherwin.com or call (855) 806-6846.

POWDURA® 5000 COATINGS

Powdura® 5000 is a powder coating system that provides excellent gloss retention and resistance to chalking and color fade. These colors are widely used and readily available today.



Colors shown are an approximate match.

POWDURA® 5000 COATINGS

Powdura® coatings' combination of durability and aesthetic finish brings a lasting impression to your structure, with rich pastel and earth tone colors – including micas available in a wide gloss range. This system provides excellent performance for your structure's heavily used metal building products, such as windows, doors, and railings. Resistant to chipping, cracking, and peeling, Powdura® 5000 coatings are designed to withstand the elements, such as airborne pollutions, and keep your finish looking new without staining or discoloration. With proven performance from over 10 years of field service, Powdura 5000 coatings provide excellent long-term appearance, require minimal maintenance, and are easily cleaned.



WHEN EXTRA CORROSION RESISTANCE IS NEEDED

Powdura® Super Durable Primer (RAS5-80000) resists damage from harmful UV rays and provides an extra barrier coat to aid in corrosion prevention. When used with Powdura® coating systems' topcoats, the coatings meet or exceed their respective AAMA specifications when applied over properly pre-treated aluminum.