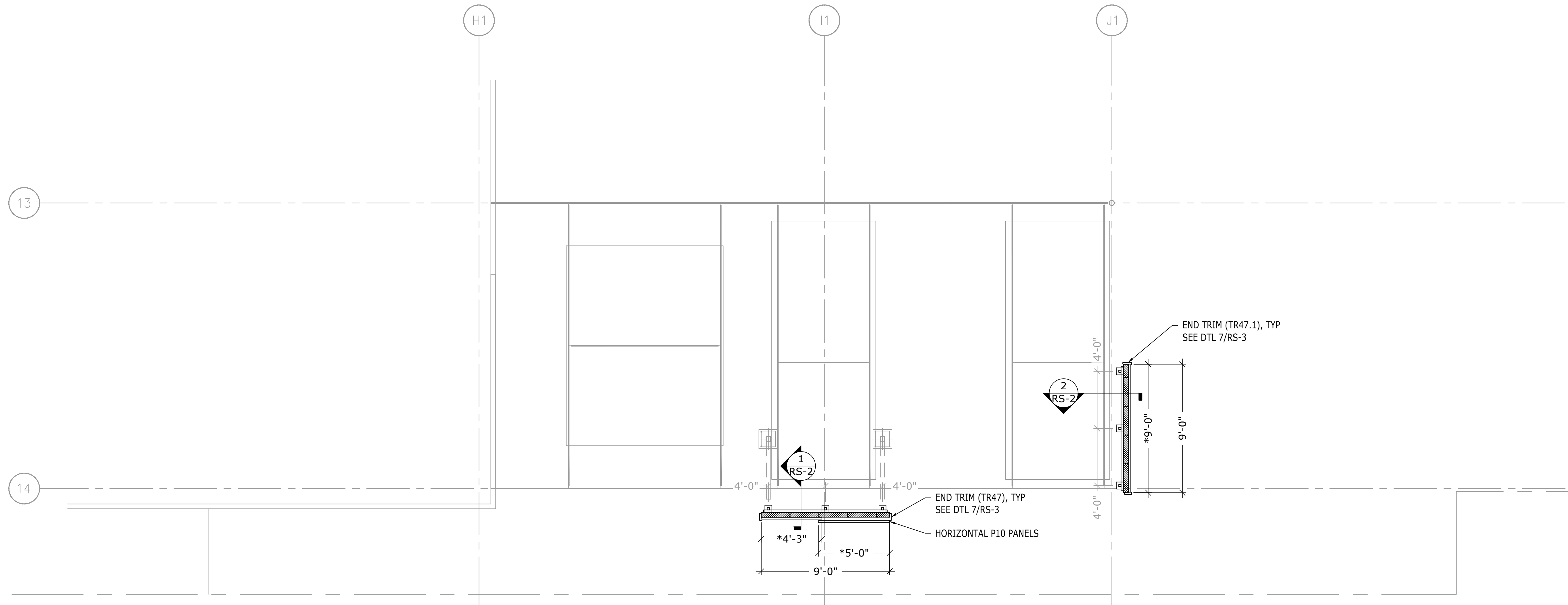


APPROVAL / REVIEW AUTHORITY:
 PLEASE REVIEW THIS DRAWING CAREFULLY. IT REPRESENTS OUR INTERPRETATION OF THE CONTRACT DOCUMENTS HOWEVER, ROOFSCREEN MFG. ASSUMES NO RESPONSIBILITY FOR THE ACCURACY OF THE INFORMATION SHOWN ON THE DESIGN DRAWINGS. THIS IS THE RESPONSIBILITY OF THE BUYER.

UNLESS NOTED OTHERWISE ON THIS DRAWING, WHEN IT IS RETURNED FROM APPROVAL, IT WILL BE ASSUMED THAT ALL INFORMATION SHOWN HEREIN HAS THE AFFIRMATION OF THE APPROVAL AUTHORITY. SUBSEQUENT CHANGES TO INFORMATION SHOWN ON THESE DRAWINGS AFTER FIRST SUBMISSION WILL BE CONSIDERED AS CONTRACT CHANGES.

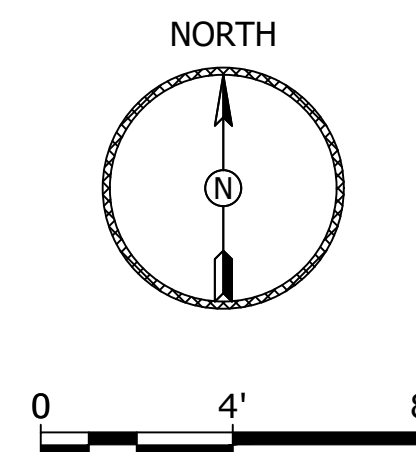
REV	DESCRIPTION	BY	DATE
△	CONSTRUCTION DOCUMENTS	KS	1/27/23
△			
△			
△			
△			



NOTES:
 1. THE ACCURACY OF THE DATA USED TO CREATE THIS LAYOUT HAS NOT BEEN FIELD VERIFIED. THE AS-BUILT LOCATIONS OF ROOF FRAMING MEMBERS AND MECHANICAL EQUIPMENT SHALL BE FIELD VERIFIED. ALL DISCREPANCIES SHALL BE BROUGHT TO THE ATTENTION OF ROOFSCREEN MFG PRIOR TO PROCEEDING WITH WORK.
 2. NOTIFY ROOFSCREEN MFG IF FIELD VERIFIED DIMENSIONS VARY MORE THAN ±3".

ROOFSCREEN PLAN

SCALE: 1/4" = 1'



*HORIZONTAL PANEL LENGTHS	
QTY	LENGTHS
2	4'-3"
2	5'-0"

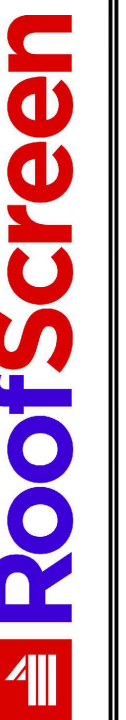
LEGEND

┆ # ROOFSCREEN LOUVER TREE W/ TREE #
 ┆ *X" LOUVER AND LENGTH "*"X" PER PLAN, SEE *LOUVER LENGTH TABLE.

SOUNDGUARD SAMPLE SHOPS

347 CORAL ST. SANTA CRUZ, CA 95060

ROOFSCREEN MFG., INC.
 347 CORAL STREET
 SANTA CRUZ, CA 95060
 INFO@ROOFSCREEN.COM



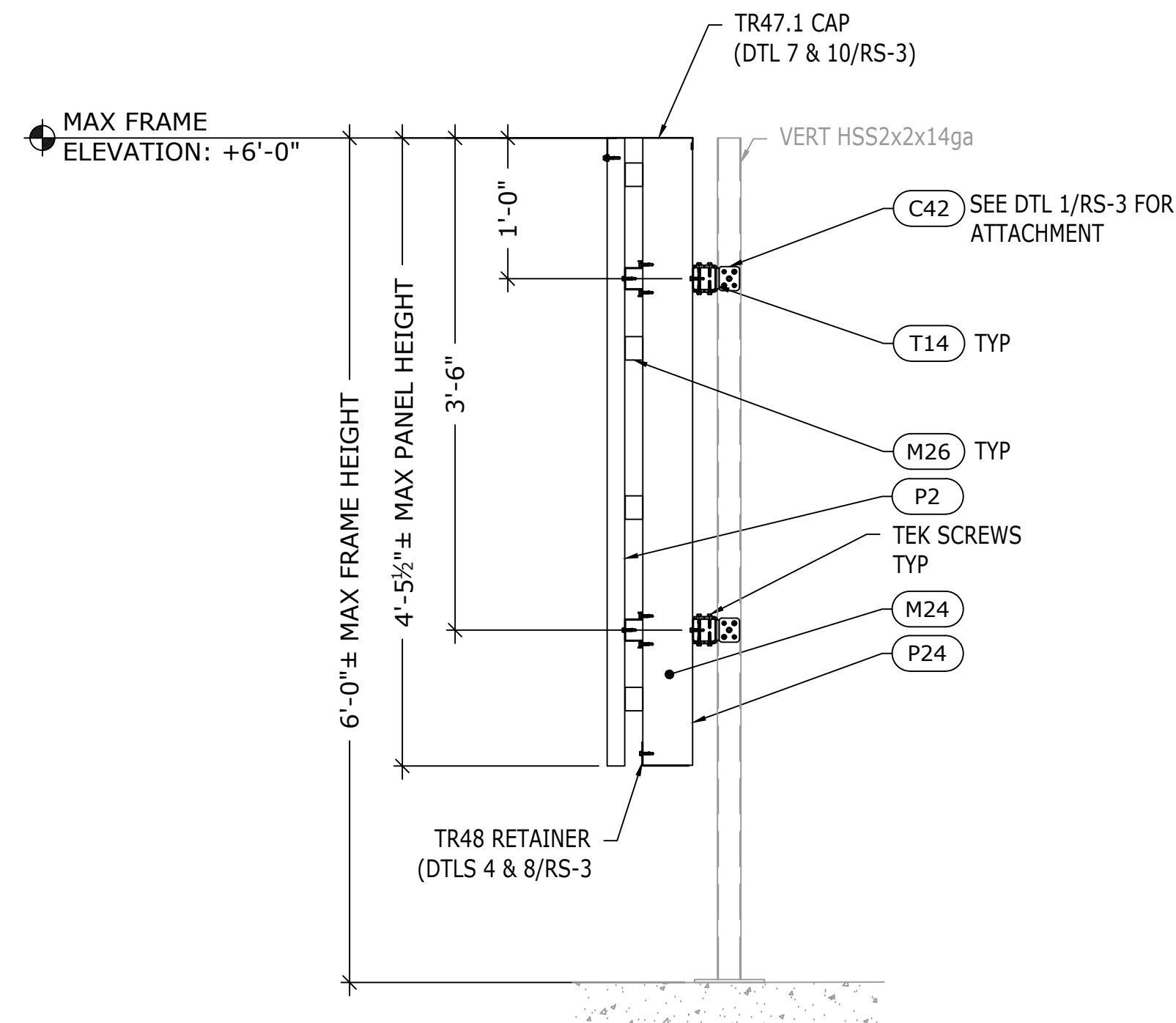
ROOFSCREEN PLAN

DRAWN BY: KS

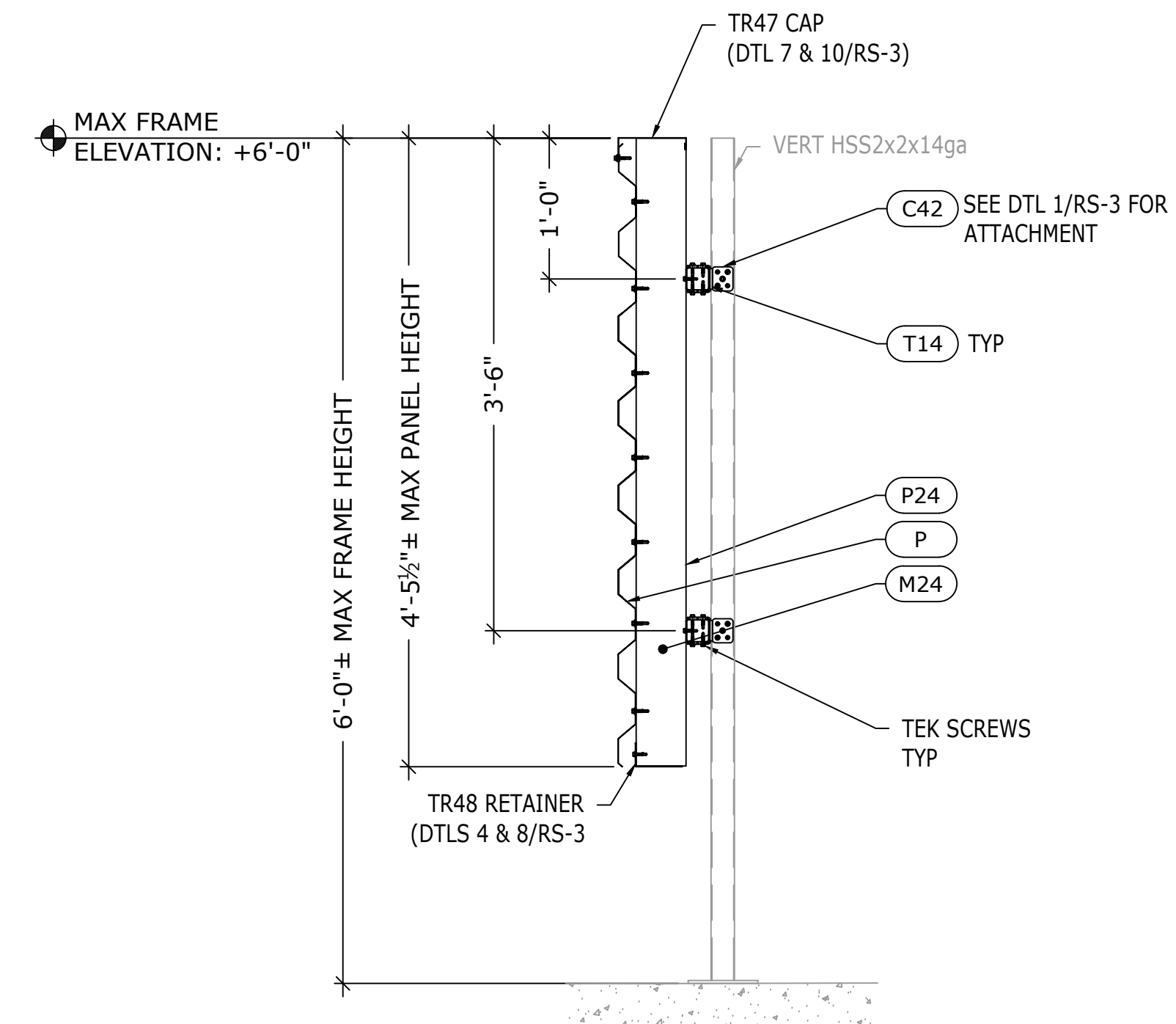
CHECKED BY: RB

JOB NUMBER:
 SHEET

RS-1



VERTICAL PANELS & SOUNDGUARD TO HSS PER PLAN 2
SCALE: NTS



HORIZONTAL PANELS & SOUNDGUARD TO HSS PER PLAN 1
SCALE: NTS

ROOFSCREEN INSTALLATION NOTES:

- ALL WORK SHALL BE PERFORMED EXCLUSIVELY BY TRAINED COMPETENT PERSONNEL AND SHALL COMPLY WITH ALL APPLICABLE SAFETY LAWS, REGULATIONS, PROGRAMS AND PRACTICES TO ENSURE THE SAFETY OF ALL PEOPLE LOCATED ON THE WORK SITE.
- TOP OF SCREEN ELEVATION SHALL BE UNIFORM ALONG FULL LENGTH OF WALL AND SHALL NOT EXCEED MAX ELEVATION SHOWN.
- LASER MEASURING IS RECOMMENDED PRIOR TO FIELD CUTTING.
- WHEN USING SELF-DRILLING TEK SCREWS TO FASTEN HORIZONTAL GIRTS TO STEEL STRUCTURAL MEMBERS BELOW, IT IS NOT NECESSARY OR RECOMMENDED TO DRILL A PILOT HOLE IN THE STEEL MEMBER.
- APPROPRIATE CARE SHALL BE TAKEN TO ELIMINATE THE POSSIBILITY OF DAMAGE TO EXISTING DECK AND ROOFING SYSTEM. CONSTRUCTION MATERIALS SHALL NOT BE STORED ON THE ROOF DECK UNLESS APPROPRIATE MEASURES ARE TAKEN TO PROTECT THE ROOF FROM DAMAGE.
- MANY OF THE FRAME CONNECTOR FITTINGS HAVE EXTRA SCREW HOLES. SEE ROOFSCREEN SPECIFICATIONS ON THIS SHEET FOR THE CORRECT NUMBER OF SCREWS PER FITTING.
- AFTER ROOFSCREEN SOUNDGUARD PANELS ARE INSTALLED, ATTACH TRIM TO PANELS WITH COLOR-MATCHED SELF-DRILLING SCREWS AT 12" O.C. ALONG EACH LEG OF TRIM AT CORNERS AND ALONG SINGLE LEG AT ENDS, AND AT 3'-0" O.C. ALONG CAP TRIM PER DTL 10/RS-3.
- APPLY ANTI-SEIZING LUBRICANT TO ALL STAINLESS BOLTS DURING INSTALLATION TO PREVENT GALLING.
- AFTER INSTALLATION IS COMPLETE, DUST OFF AND REMOVE ALL METAL SHAVINGS FROM BASE CAPS AND FINISHED ROOF SURFACE TO PREVENT SURFACE RUST AND STAINING.
- TEK SCREWS ARE FULLY SEATED WHEN THE HEAD IS FLUSH WITH THE WORK SURFACE. OVERDRIVING MAY RESULT IN TORSIONAL FAILURE OF TEK SCREWS OR STRIP OUT OF THE SUBSTRATE. SCREW GUN SHOULD BE A MINIMUM OF 6 AMPS AND HAVE AN RPM RANGE OF 0-2500.

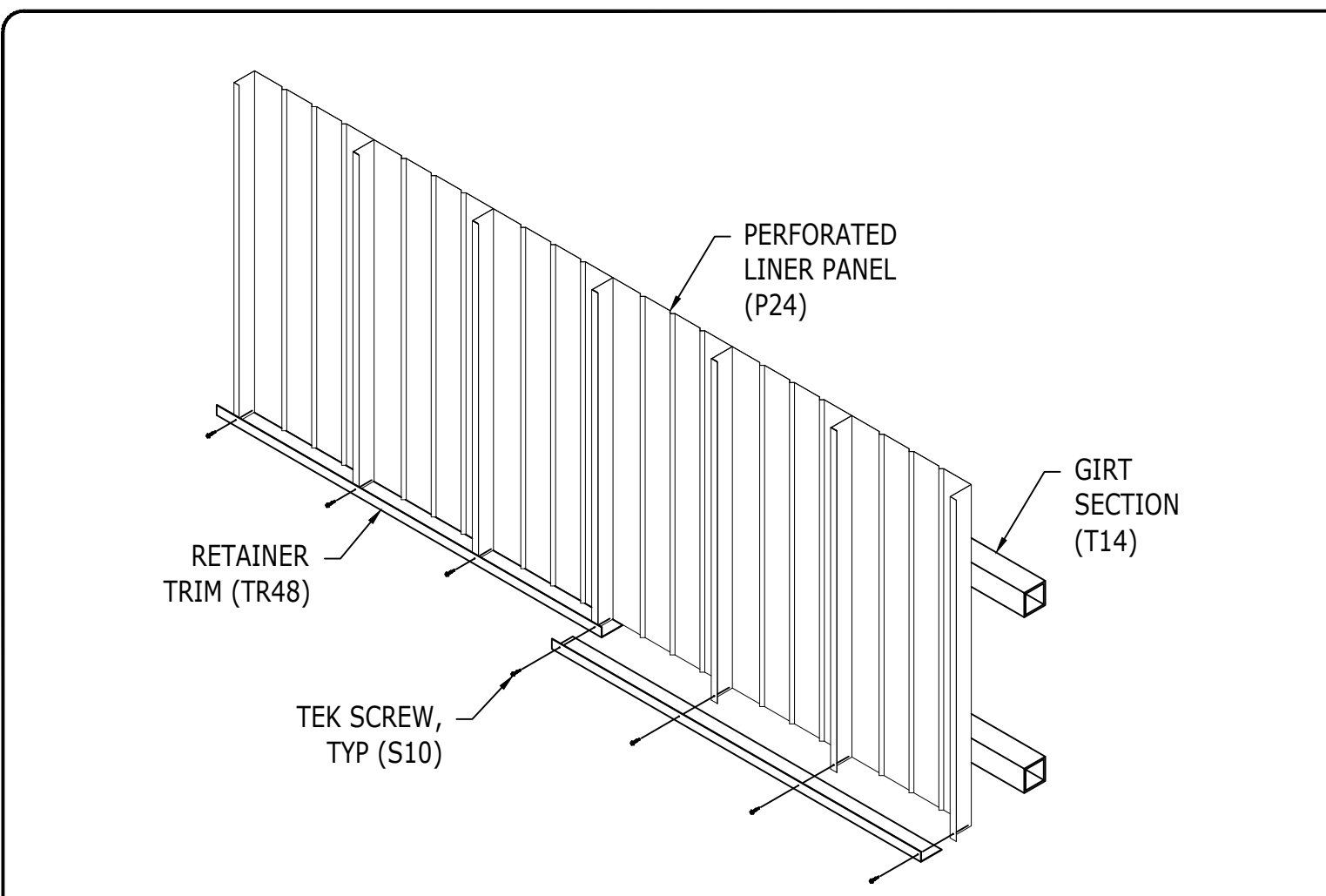
ROOFSCREEN SPECIFICATIONS:

- P** PANEL: 7.2 RIB 1 1/2" DEEP, 24ga, TWO HORIZONTAL ROWS, FASTEN TO VERTICAL TUBE SECTION W/ COLOR-MATCHING #12-14 X 1" LONG T/3 "TEK" SCREW W/ NEOPRENE WASHER - ROOFSCREEN P/N "S16", (1) TOTAL PER DOWN FLUTE, PER DTL 9/RS-3, AND PER MANUFACTURER'S SPECS. DEFLECTION LIMIT = L/180
- P2** PANEL: FLUSH 1 1/2" DEEP, 24ga, ORIENT VERTICAL, FASTEN TO HORIZONTAL HAT CHANNEL W/ #12-14 X 1" LONG T/3 "TEK" SCREW - ROOFSCREEN P/N "S10", (1) PER HAT SECTION, PER DTL 13/RS-3, AND PER MANUFACTURER'S SPECS. DEFLECTION LIMIT = L/180
- P24** SOUND WALL: ATTACH 24ga S.S. PERFORATED LINER PANELS TO GIRTS SECTION W/#12-14 X 1" LONG T/3 "TEK" SCREWS - ROOFSCREEN P/N "S10", (2) PER PANEL @ EACH GIRTS ROW. STITCH SCREW 4" LEG OF EACH LINER TO ADJACENT LINER PANEL AT 24" O.C. MIN FOR TIGHT FIT, MIN (4) "S10" PER PANEL. FILL LINER PANEL W/MINERAL ROCK WOOL BOARDS "M24" BEFORE INSTALLING FACE PANELS.
- M24** MINERAL WOOL: ALIGN MINERAL WOOL INSIDE LINER PANEL PER DTL 11/RS-3.
- M26** FOAM SPACER BLOCK: ATTACH (M26) TO BACK OF PANEL LEG BEFORE ATTACHING PANEL TO HORIZ HAT (H10) CHANNEL. USE BLOCKS AS NECESSARY TO KEEP MINERAL WOOL (M24) SNUGLY INSIDE SOUNDGUARD LINER PANEL (P24) PER DTL 12/RS-3.
- HAT CHANNEL: ASTM A653, FY = 55 ksi
- H10** HAT CHANNEL
1 1/2" DEEP, 16ga, CUSTOM PROFILE, ORIENT HORIZONTAL, FASTEN TO SOUNDWALL LINER PANEL W/ #12-14 X 1" LONG T/3 "TEK" SCREW - ROOFSCREEN P/N "S10", (1) EA LEG.
- HSS: ASTM A500, FY = 50 ksi
- T14** HORIZONTAL GIRTS & VERTICAL SUPPORT
2"x2", 14ga ORIENT HORIZONTAL, FASTEN TO VERTICAL & HORIZONTAL HSS W/ 2"x2" ANGLE BRACKET & #12-14 X 1" LONG T/3 "TEK" SCREW - ROOFSCREEN P/N "S10", (4) PER BRACKET PER DETAILS 3/RS-3, 4 & 14/RS-4. SPLICE IN FIELD WITH "T14.1" PER DTL 2 & 3/RS-4.
- PROPRIETARY CONNECTORS:
- C42** SQUARE TO SQUARE CONNECTOR:
CONN TO "T14" TUBE & VERT HSS FRAME W/ #12-14 X 1" LONG T/3 "TEK" SCREWS - ROOFSCREEN P/N "S10", (2) EA LEG OF BRACKET TYP. (8) TOTAL PER DETAIL 1/RS-3.

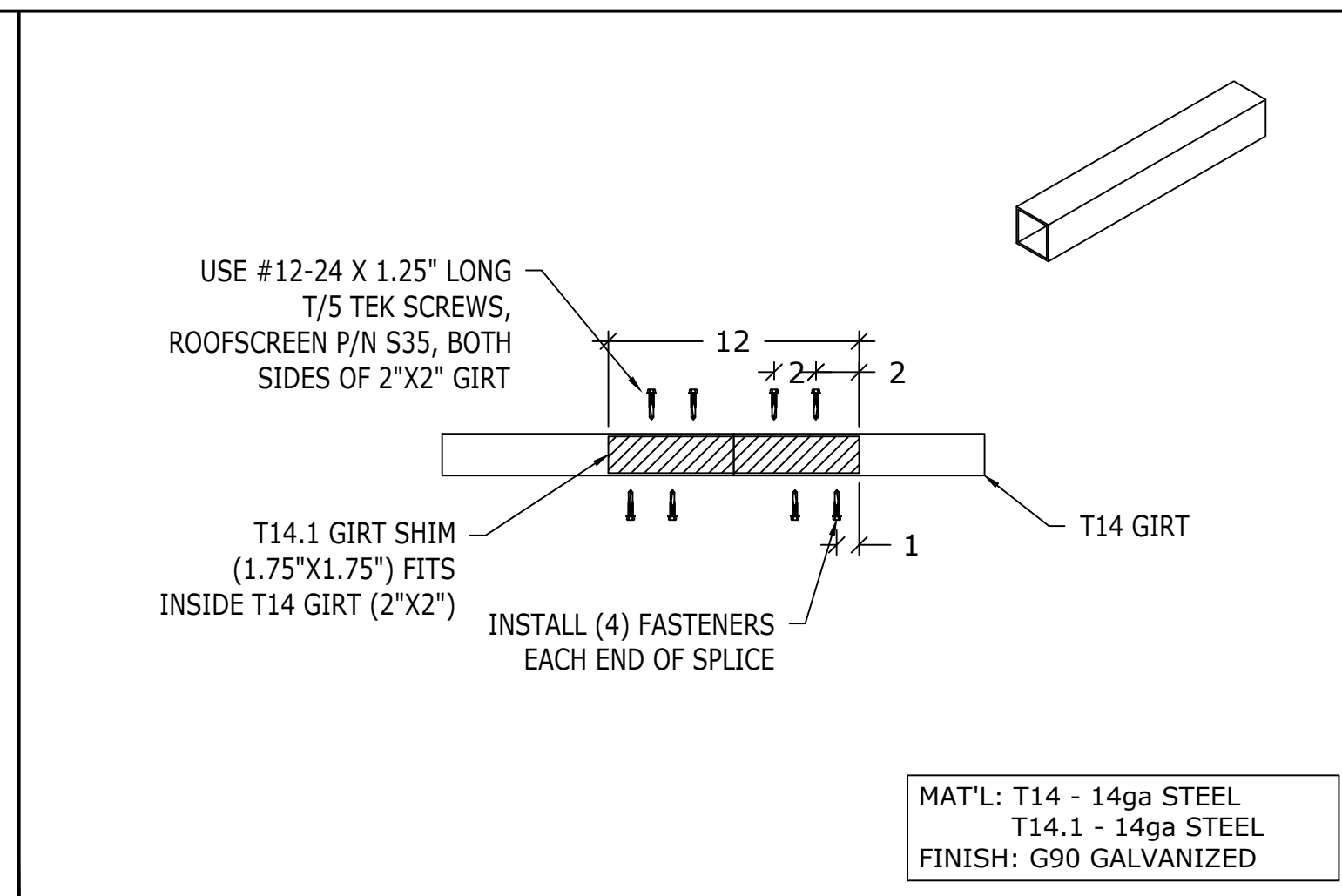
REV	DESCRIPTION	BY	DATE
1	CONSTRUCTION DOCUMENTS	KS	1/27/23

SOUNDGUARD SAMPLE SHOPS <small>347 CORAL ST. SANTA CRUZ, CA 95060</small>	ROOFSCREEN MFG., INC. 347 CORAL STREET SANTA CRUZ, CA 95060 TEL: 831.438.1111 INFO@ROOFSCREEN.COM
	

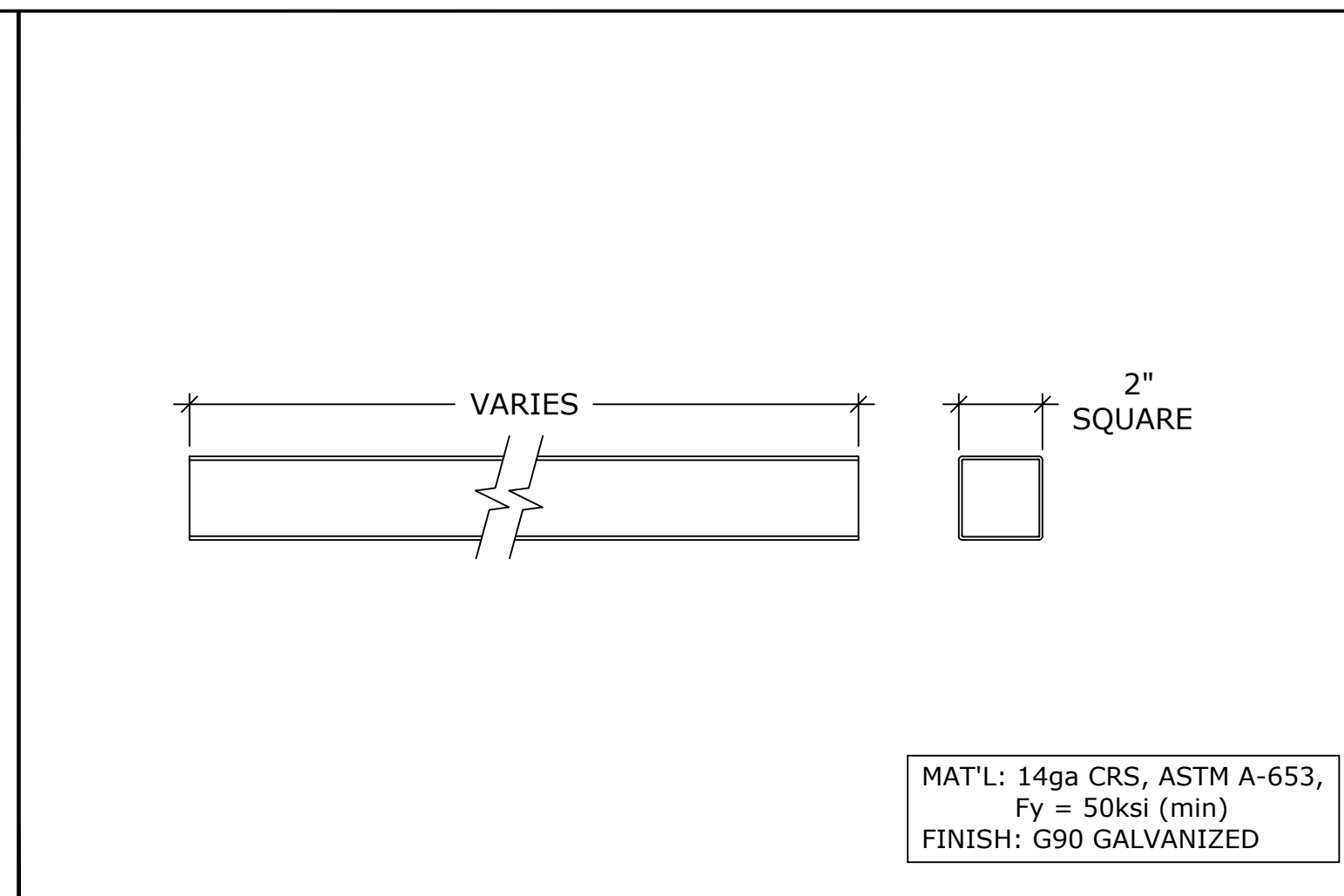
ROOFSCREEN FRAME DETAILS & SPECIFICATIONS
DRAWN BY: KS
CHECKED BY: RB
JOB NUMBER: SHEET
RS-2



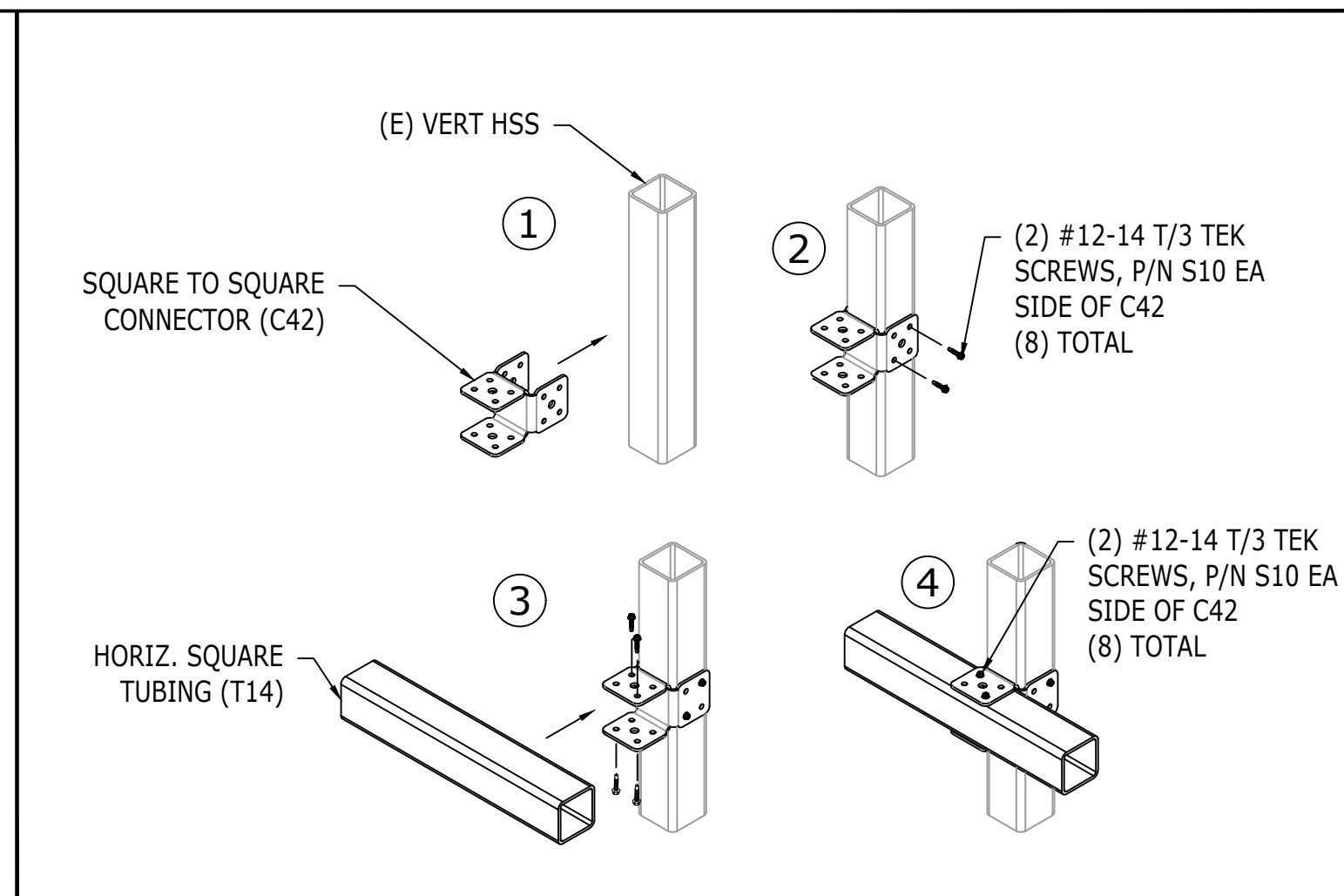
4 SOUND GUARD RETAINER TRIM INSTALL SCALE: NTS



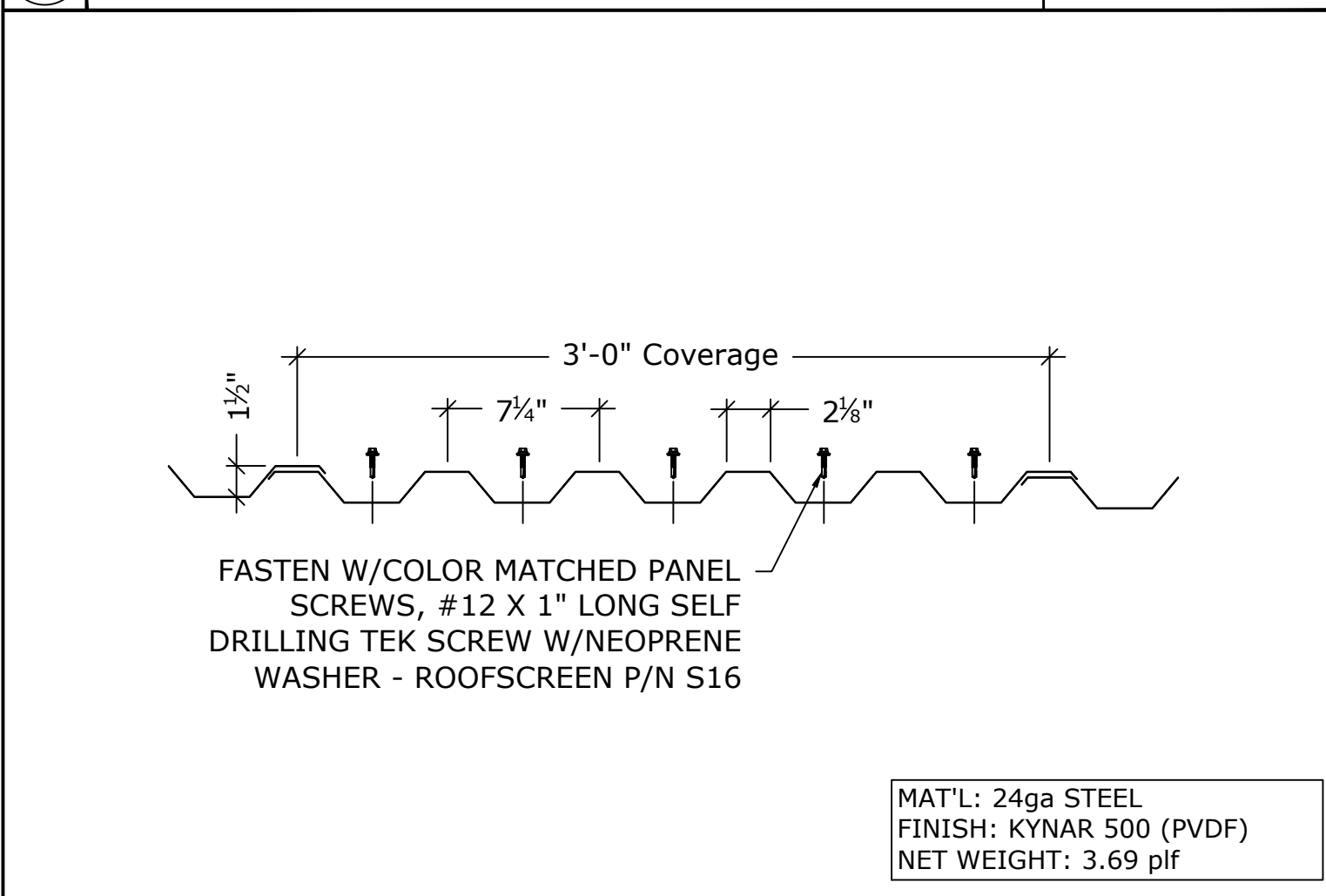
3 T14.1 1.75\"X1.75\" GIRT SPLICE SCALE: NTS



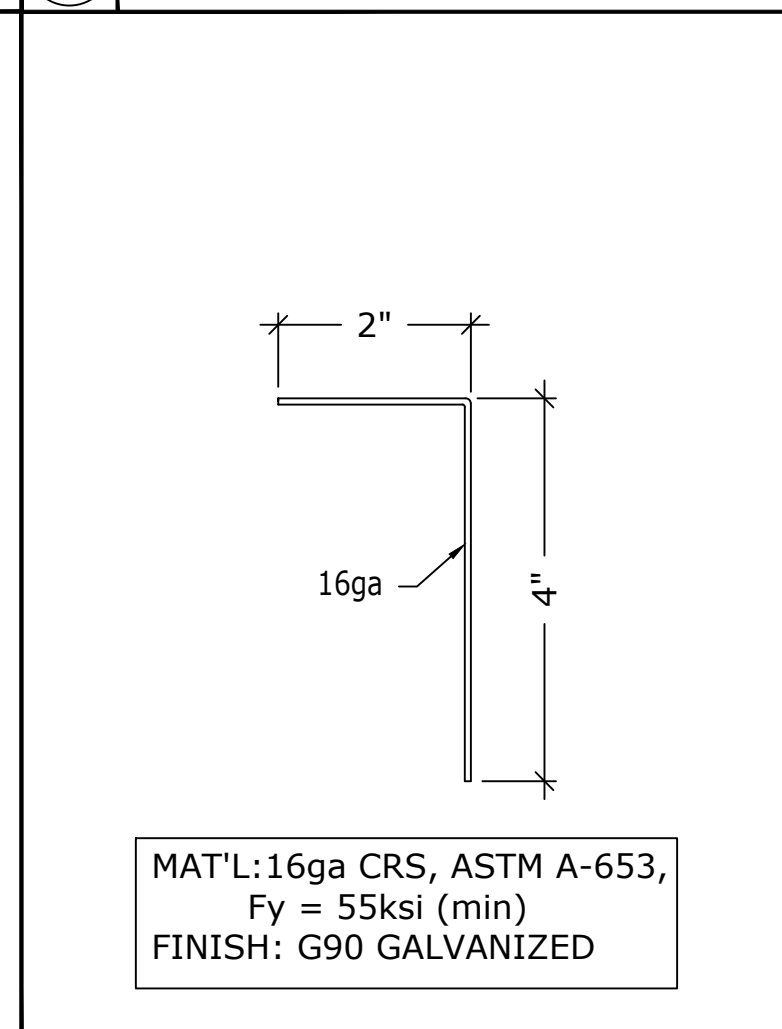
2 2\" X 2\" SQUARE T14 GIRT SECTION SCALE: NTS



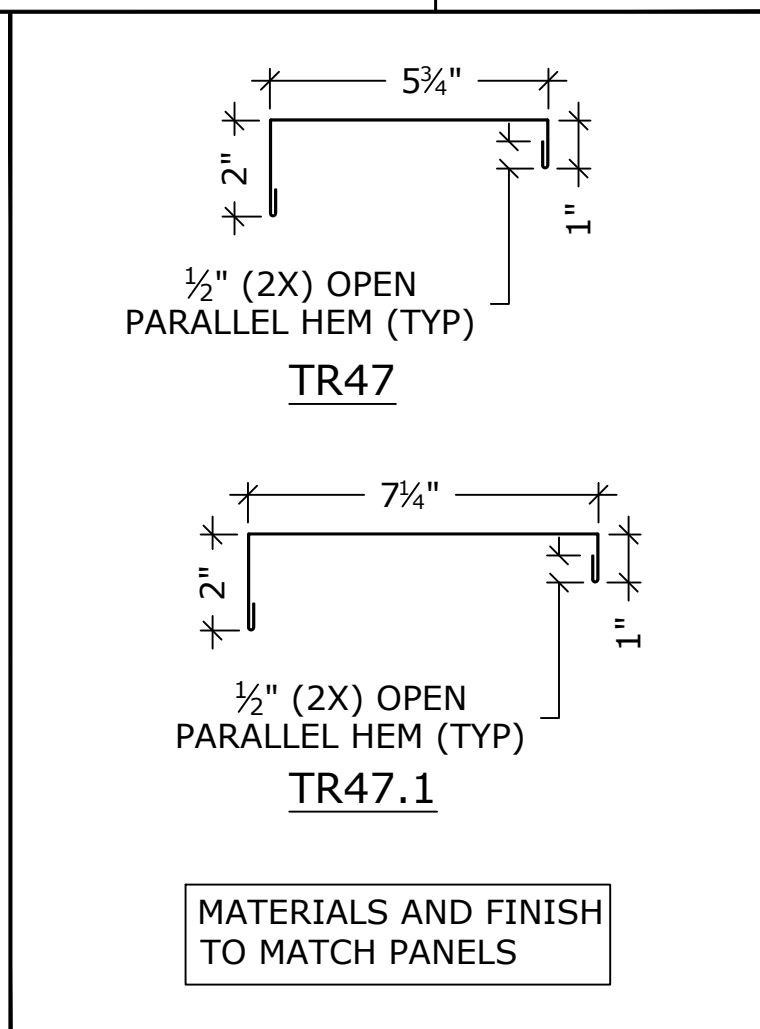
1 HORIZ T14 TO VERT HSS SCALE: NTS



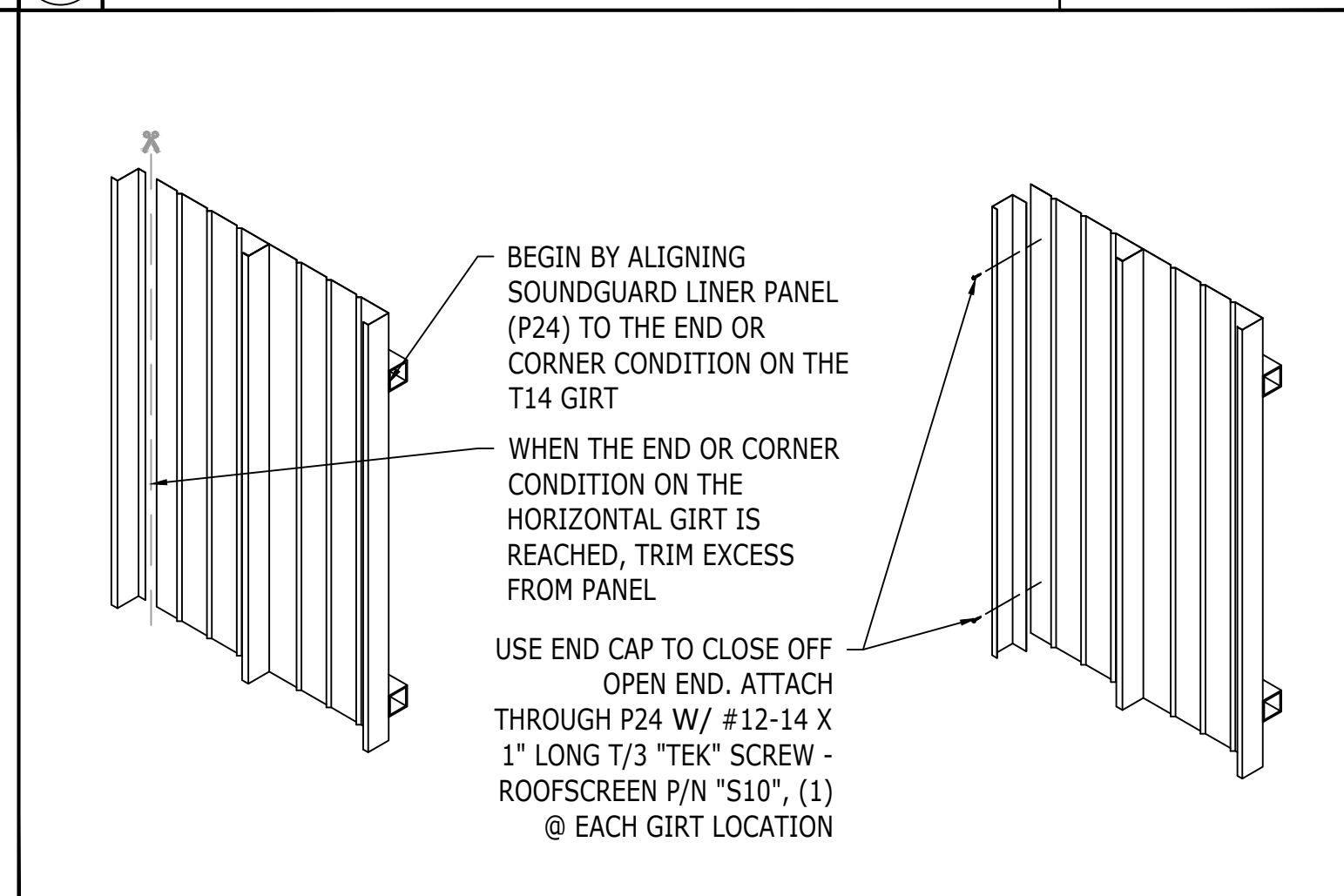
9 P10 7.2 RIB PANEL SCALE: NTS



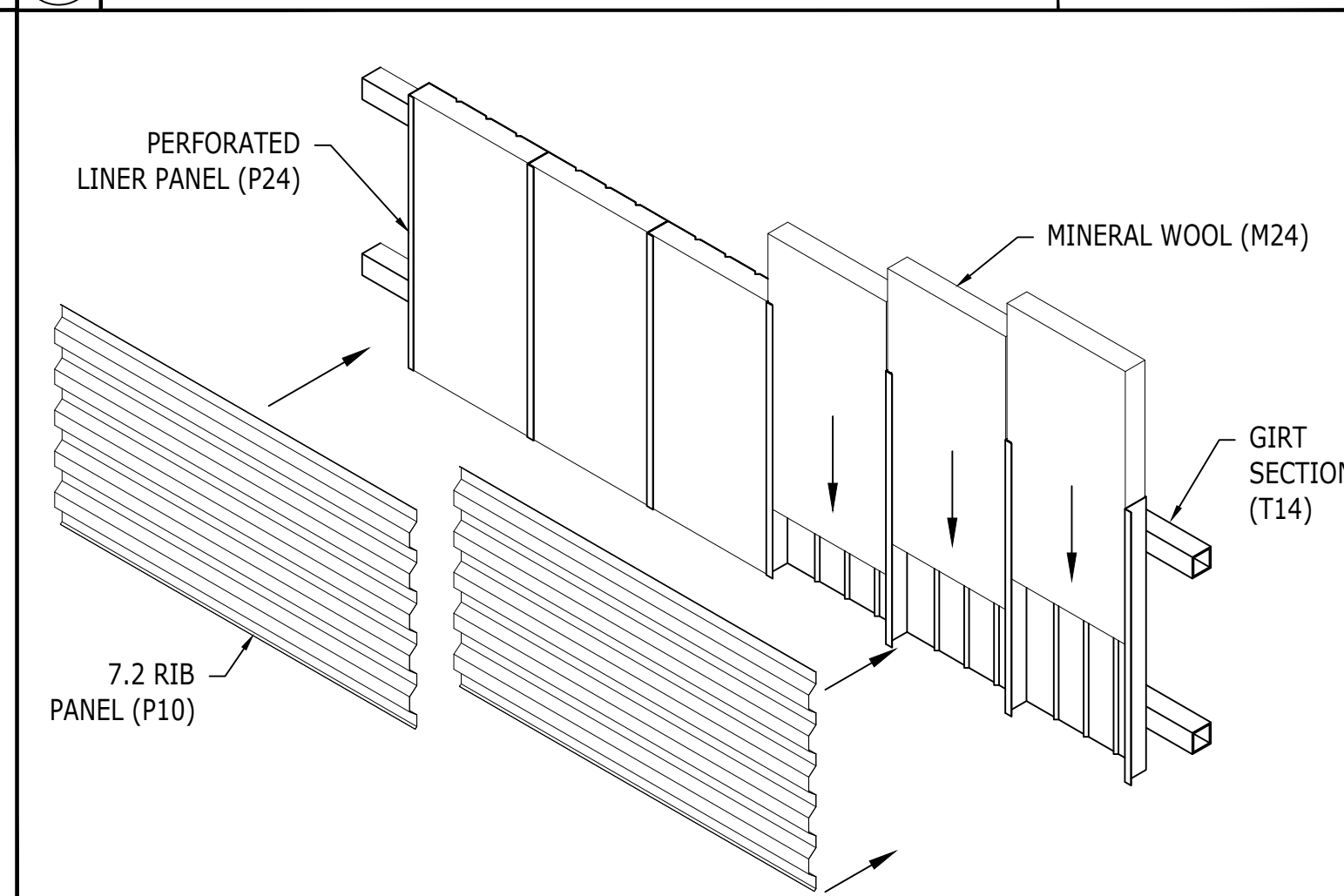
8 RETAINER TRIM 4\" X 2\" (TR48) SCALE: NTS



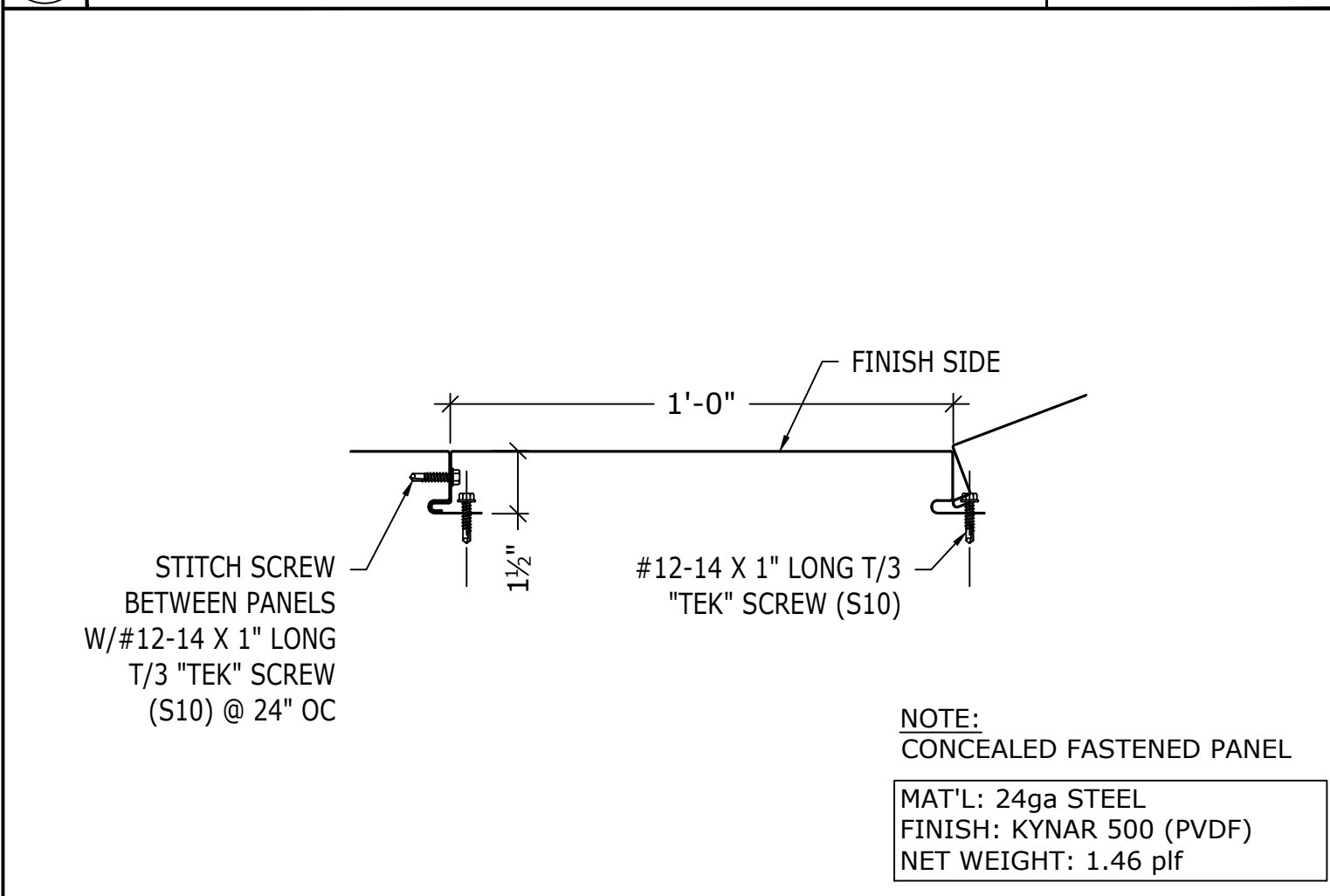
7 CAP & END TRIM SCALE: NTS



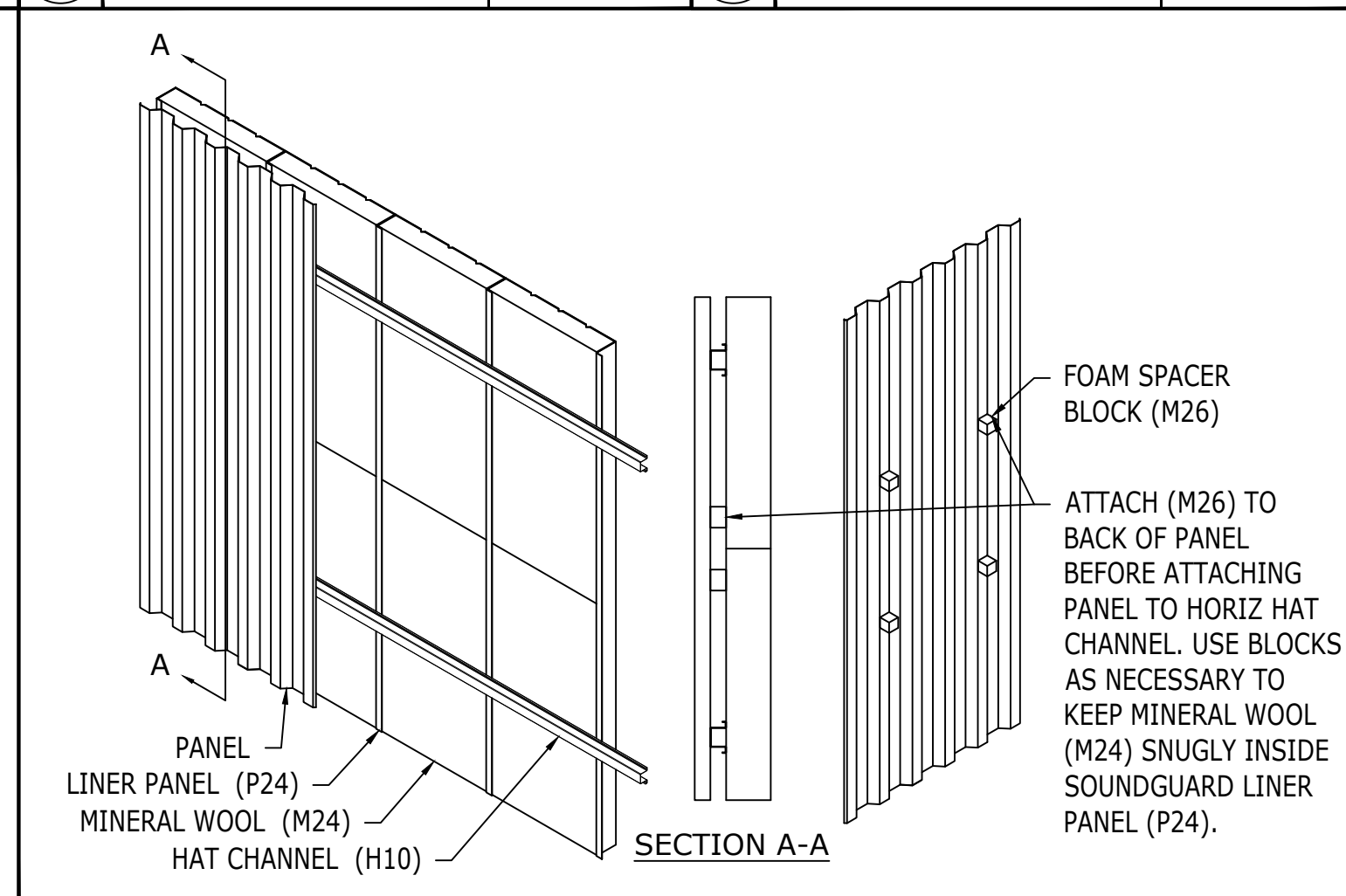
6 SOUND GUARD LINER PANEL (P24) TRIM DETAIL SCALE: NTS



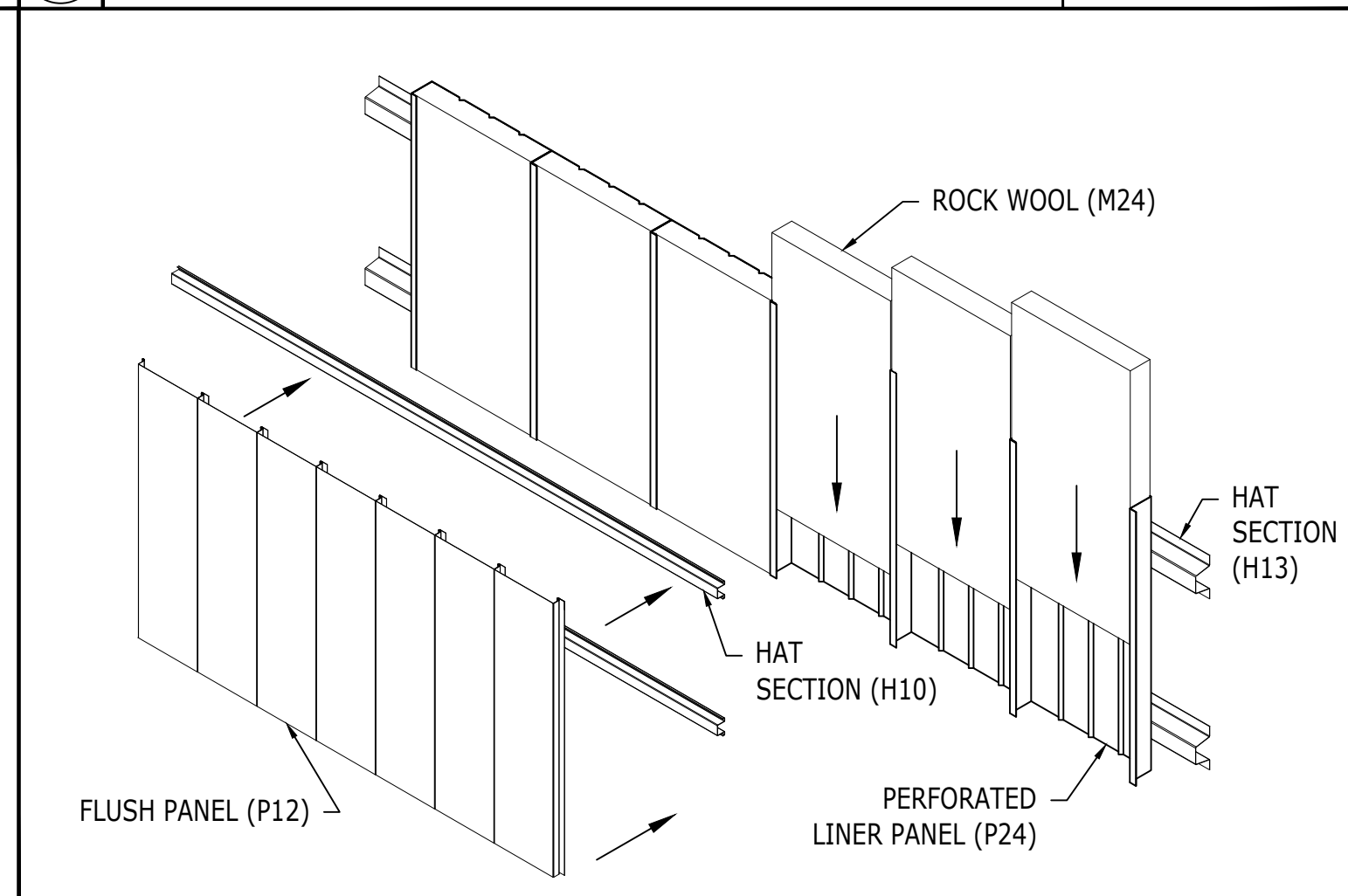
5 SOUND GUARD ASSEMBLY (HORIZ PANELS) SCALE: NTS



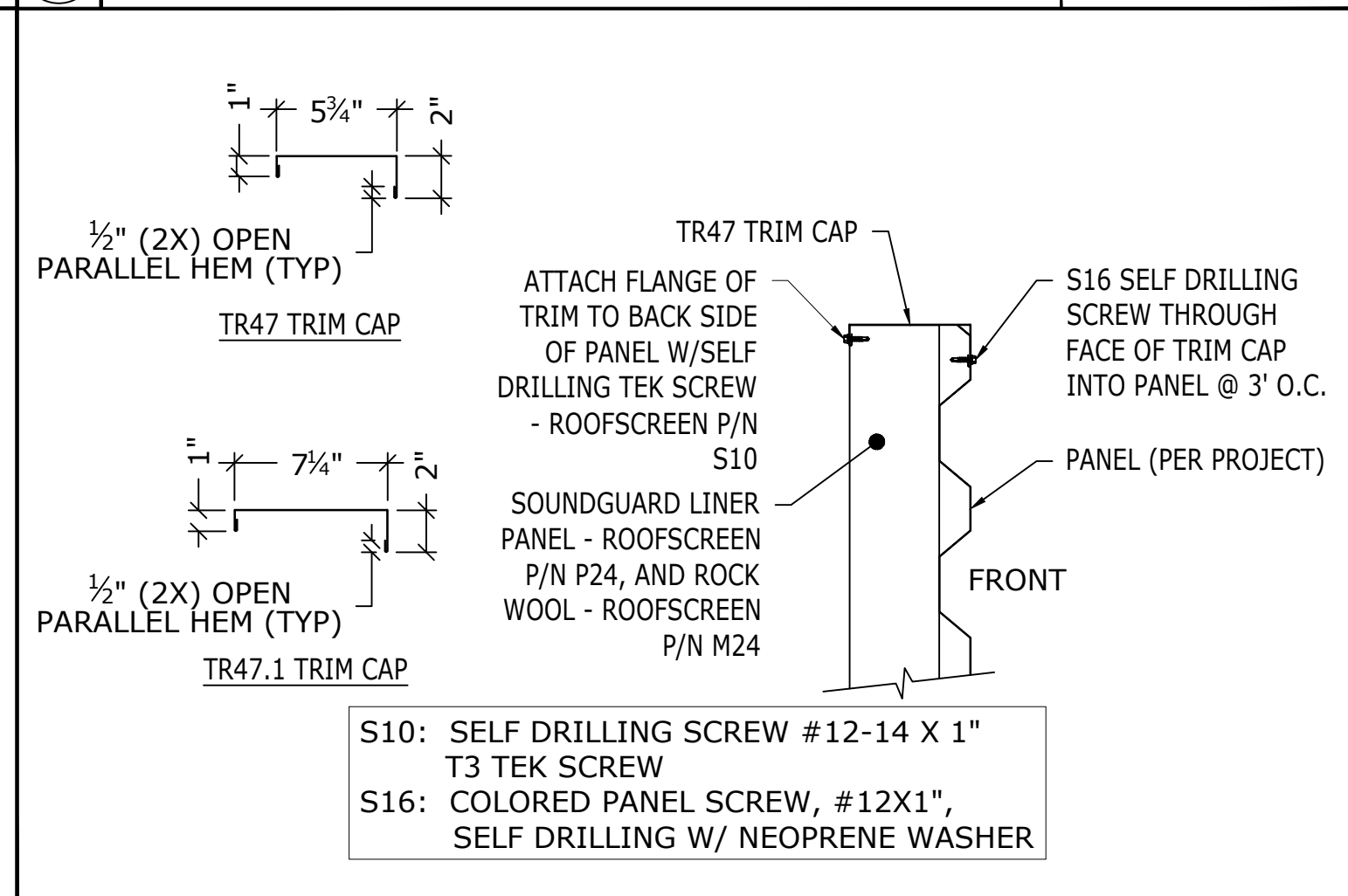
13 P12 FLUSH PANEL SCALE: NTS



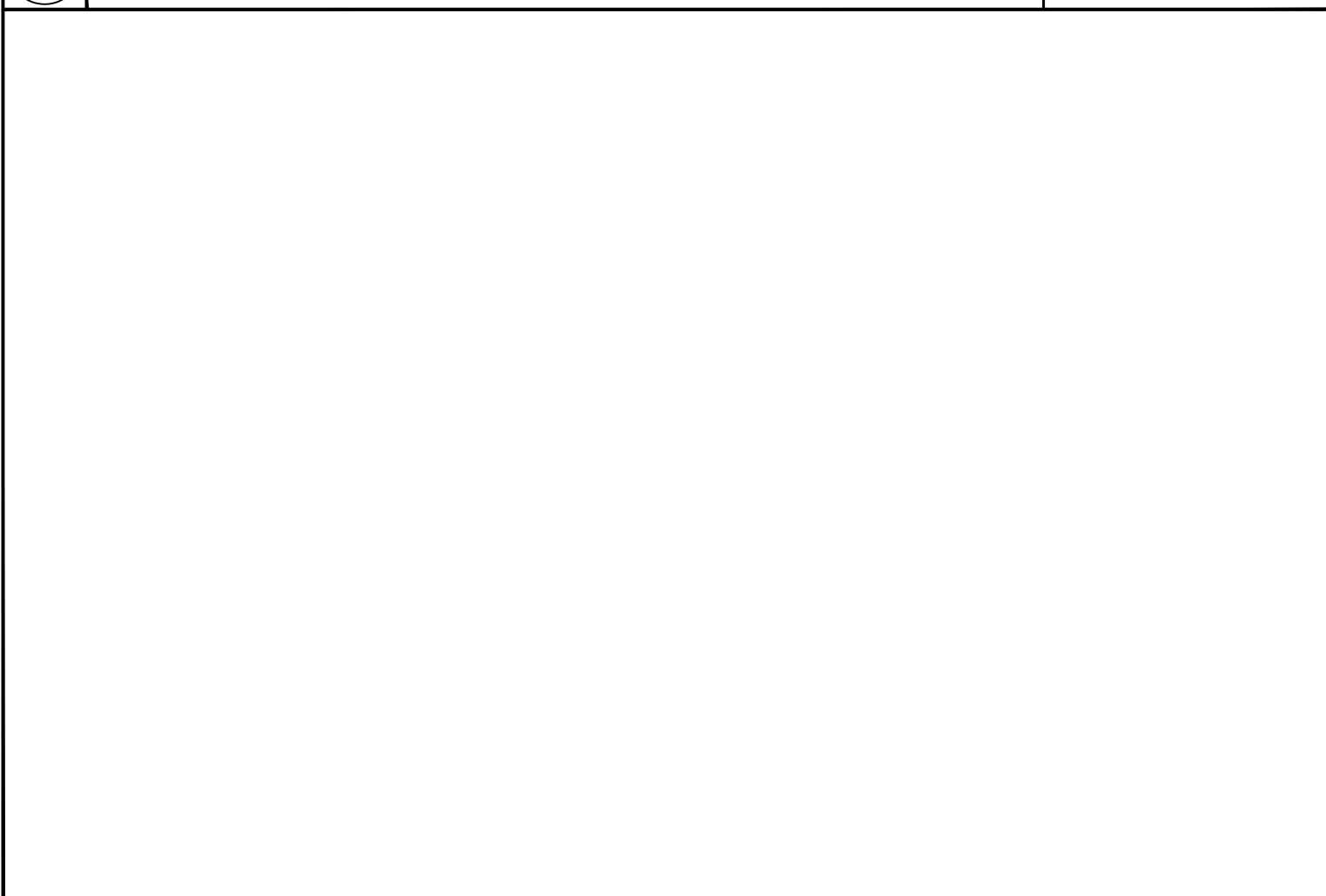
12 SOUNDGUARD FOAM SPACER ATTACH SCALE: NTS



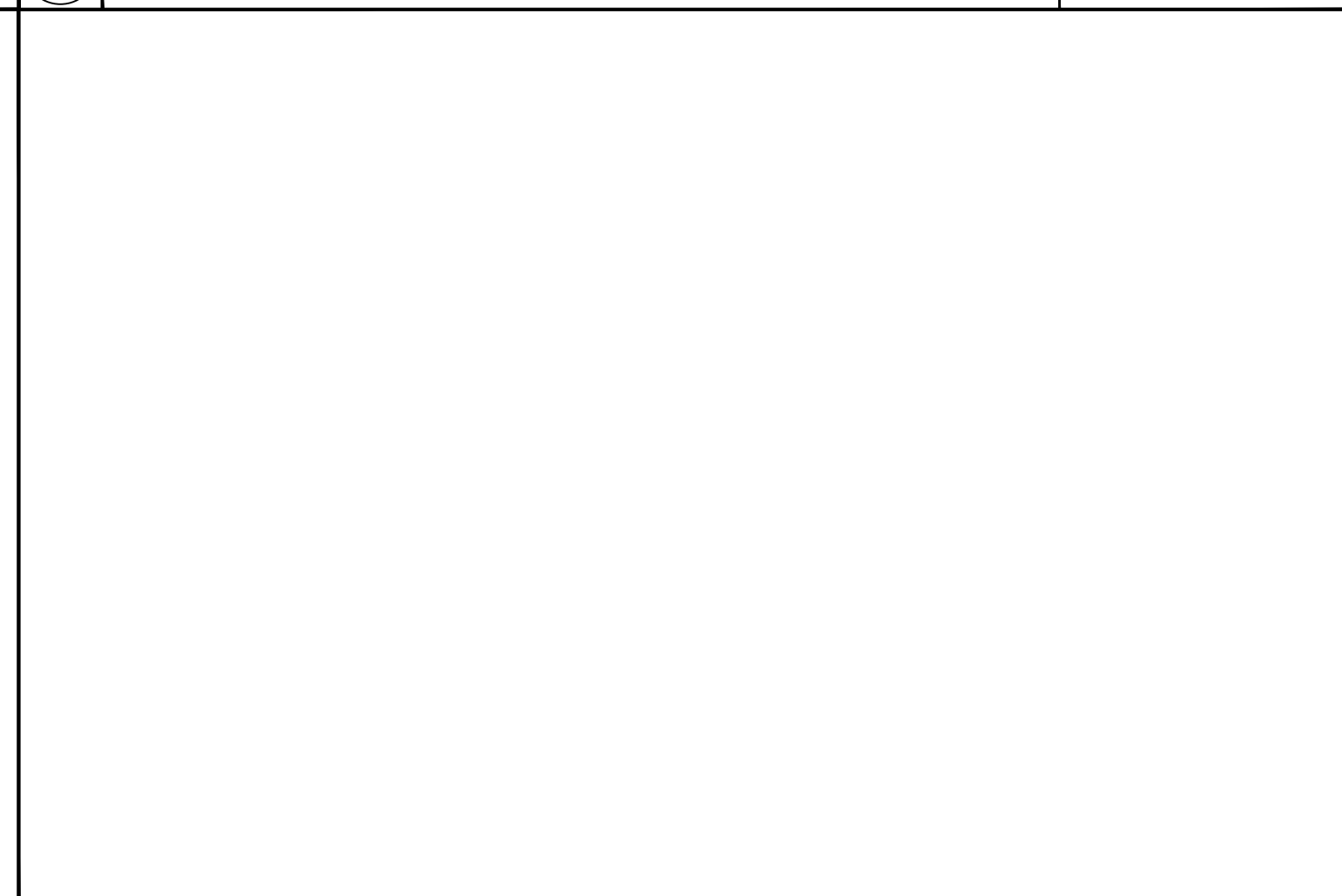
11 SOUND GUARD ASSEMBLY (VERT PANELS) SCALE: NTS



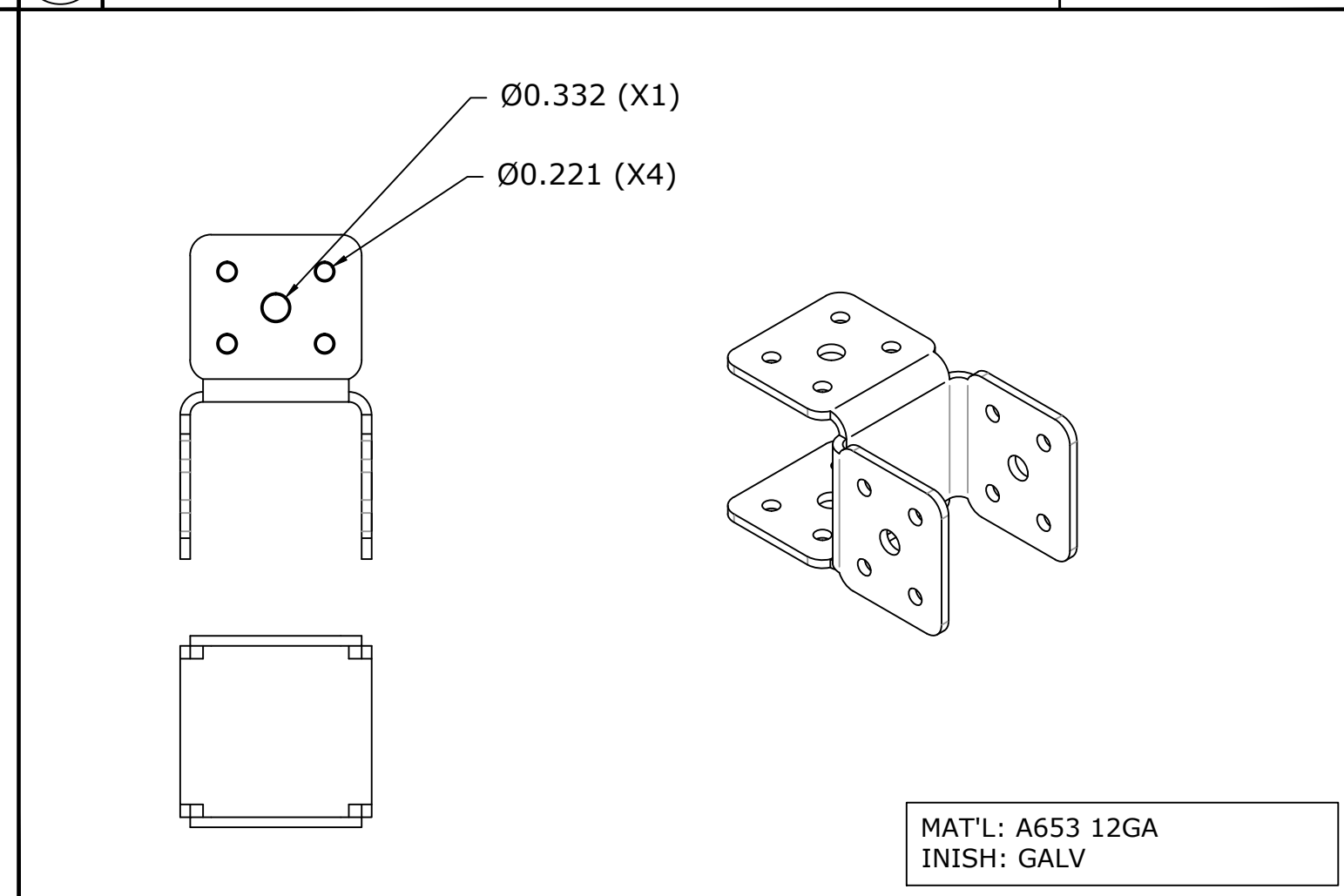
10 TRIM CAP (TR47 & TR47.1), SOUND GUARD ATTACHMENT SCALE: NTS



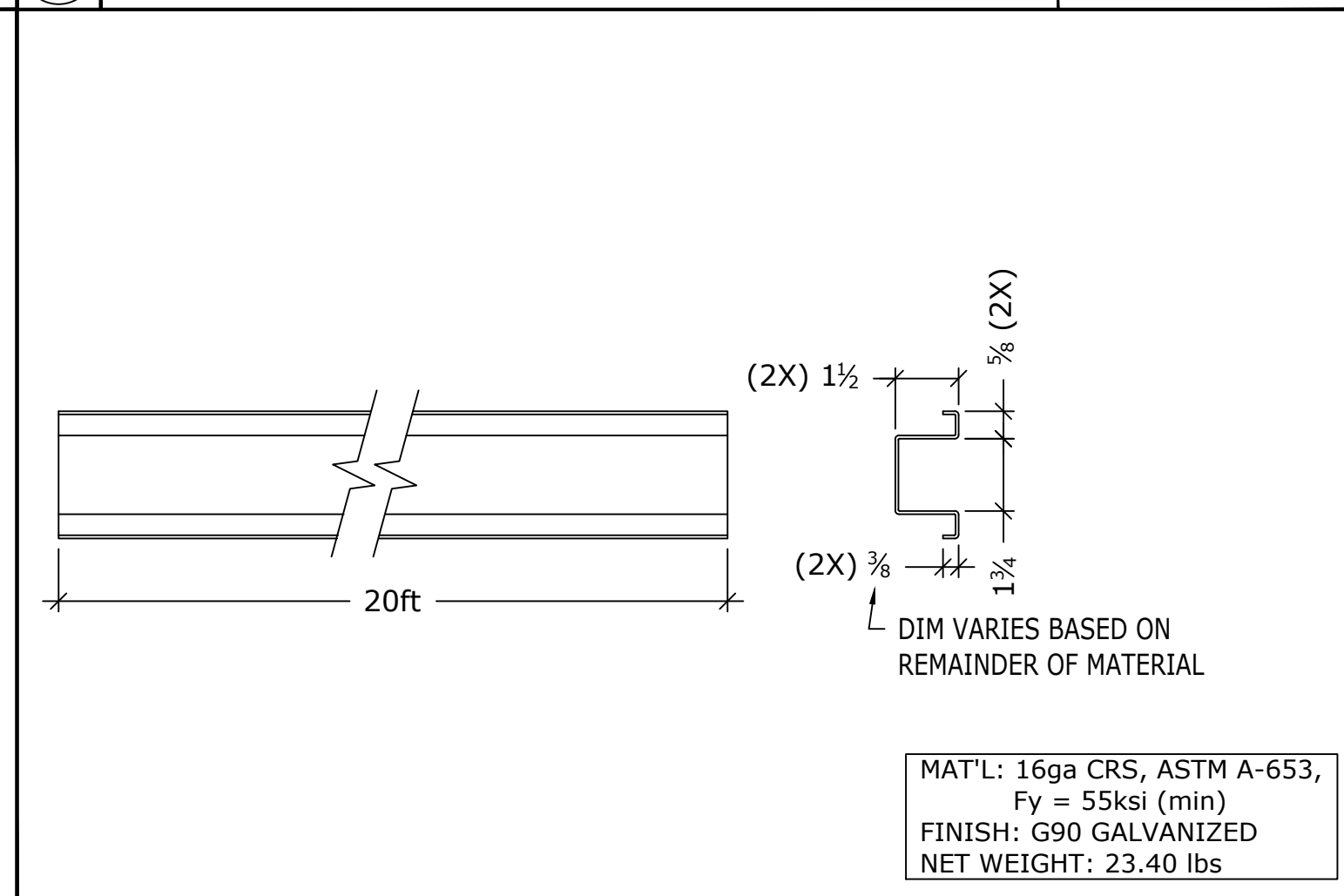
14 H10 HAT SECTION SCALE: NTS



13 P12 FLUSH PANEL SCALE: NTS



15 C42 SQUARE TO SQUARE CONNECTOR SCALE: NTS



14 H10 HAT SECTION SCALE: NTS

REV	DESCRIPTION	BY	DATE
1	CONSTRUCTION DOCUMENTS	KS	1/27/23

REV	DESCRIPTION	BY	DATE
1	CONSTRUCTION DOCUMENTS	KS	1/27/23

SOUNDGUARD SAMPLE SHOPS
 347 CORAL ST. SANTA CRUZ, CA 95060
 ROOFSCREEN MFG., INC.
 347 CORAL STREET
 SANTA CRUZ, CA 95060
 INFO@ROOFSCREEN.COM

ROOFSCREEN PART/ASSEMBLY DETAILS
 PARTS/ASSEMBLY DETAIL
 DIMS IN INCHES U.S.O.
 DRAWN BY: KS
 CHECKED BY: RB
 JOB NUMBER:
 SHEET
RS-3