

Captivating colors. Distinctive designs.

Architectural powder coatings color guide



We protect and beautify the world®

PPG: WE PROTECT AND BEAUTIFY THE WORLD®



A trusted global coatings leader

Operations in 75+ countries, with 100+ manufacturing facilities and ~50,000 employees



Renowned color expertise

Trend-setting palettes for home, auto and industry paired with unrivaled color matching



Commitment to sustainability

Over 38% of annual sales from sustainably advantaged products and processes



Dedication to innovation

3,500+ technical employees and \$463 MM average annual R&D investment



ABOUT THE PHOTOS

COVER/BACK

15, 35 and 55 Hudson Yards
New York, NY
PPG *Corafon* Powder Coatings
Black Flower Texture (PCNT99112)
Photos: Max Touhey

INTRODUCTION

City Point BKLYN
Brooklyn, NY
PPG *Corafon* Platinum Powder Coatings
White Terra Cotta (PCNT29308)
Photo: Kenneth Grant

POWDER LINEUP

The Bulletin Building
Philadelphia, PA
PPG *Corafon* Powder Coatings
Galaxy Red (PCTT63114) + clear coat
Photo: Matt Krissel

COLOR CHIPS SPREAD

The Tower at PNC Plaza
Pittsburgh, PA
PPG *Corafon* Sunstorm Powder Coatings
Gray Mica (custom color)
Photo: Tom Cwenar

The color chips in this brochure cannot be considered totally accurate color matches, and are not to be used as approved standards. This document contains general information only and should not be construed as creating any warranties, express or implied. Please contact a PPG representative for additional information. The PPG Logo, We protect and beautify the world, Corafon, Envirocron and VARI-Cool are registered trademarks of PPG Industries Ohio, Inc. The IN Logo is a registered trademark of LinkedIn Corporation. The YouTube Icon is a registered trademark of Google, LLC. ©2022 PPG Industries, Inc. All rights reserved. 06/22 PPG155



The PPG one-coat powder lineup

FGIA/AAMA 2605

PPG CORAFLON® Platinum FEVE fluoropolymer powder

USES: Curtain walls, storefronts, architectural extrusions, plate/brake metal and other monumental applications | GLOSS: 5-85 | SEACOAST: Yes*

A breakthrough, high-performance coating with an extended gloss range that can create looks never before possible with powder, including mineral tones and textures that mimic cement, stone, terracotta and anodized metal



Improved corrosion performance in one coat versus standard FEVE powders



20% higher transfer efficiency than standard FEVE powders



Broader gloss range than standard FEVE powders (5-85 vs. 25-70)

FGIA/AAMA 2604

PPG ENVIROCRON® HTE 04 ultra-durable polyester powder

USES: High-end, high-traffic residential and light commercial buildings
GLOSS: Matte, satin and gloss | SEACOAST: Yes*

Uses a more robust resin and pigment system than *Envirocron* HTE 03 powder coating for added durability and protection



Waste saving first-pass transfer efficiency rate up to 85%



Energy-saving, 10-minute cure at 350° F (177° C)**



Reduced coating film thickness while maintaining high quality**

FGIA/AAMA 2603

PPG ENVIROCRON® HTE 03 durable polyester powder

USES: Residential window/door frames, railings, trim, interior commercial applications
GLOSS: Matte, satin and gloss | SEACOAST: No

Provides good film integrity, impact and mar resistance and color control



* Powder primers available for additional protection in severe environments. ** Versus traditional powder coatings.



Powerful protection and performance. Distinctive finishes. Lasting beauty.

PPG powder coatings set the industry standard for durability, lasting beauty and exceptional finishes. Rigorously tested and engineered for the most demanding conditions, PPG powder coatings for architectural metal applications meet all levels of FGIA/AAMA performance standards and are available in one of the largest libraries of colors and special effect finishes in the industry.

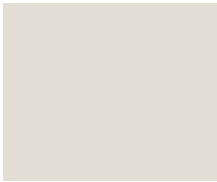


Powder options available specifically formulated without:

- Triglycidyl isocyanurate (TGIC)
- Perfluorooctanoic acid (PFOA)
- Fluorosurfactants
- Volatile organic compounds (VOCs)
- Hazardous air pollutants (HAPs)
- Living Building Challenge (LBC) Red List substances
- Substances of Very High Concern (SVHC)

CORAFLO PLATINUM SOLID COLORS

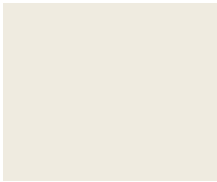
Standard Colors Are Highlighted. Minimum Order May Apply to Non-Standard Colors



Bone White

PCNT88147P

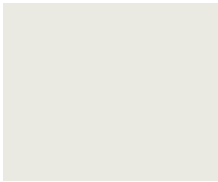
20-35



Bright White

PCNT88148P

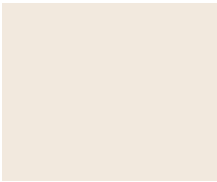
30-45



Snowdrift Sparkle Texture

PCNT85107P

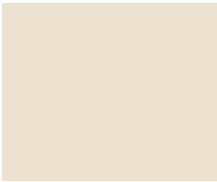
2-6



Moondust Sparkle Texture

PCNT83101P

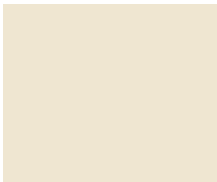
0-6



Potomac Stone

PCNT89202P

7-14



Colonial White

PCNT88149P

25-35



Fashion Gray

PCNT78166P

20-35



Eclipse Gray

PCNT78163P

25-40



Charcoal Gray

PCNT78133P

25-35



Black

PCNT98111P

40-60



Seawolf

PCNT28211P

20-35



Antique Bronze

PCNT28212P

20-35



Gray Sparkle Texture

PCNT23138P

0-4



Fairview Taupe

PCNT28128P

25-35



Golden Chestnut

PCNT25210P

10-20



Medium Bronze

PCNT28214

20-30



Bronze

PCNT75137

10-20



Statuary Bronze

PCNT28216

25-45



Limestone Quarry

PCNT29364P

10-20



Rich Gold Sparkle

PCNT35105P

40-50



Bronzed Caramel

PCNT25211P

40-50



Terrazzo Tan

PCNT29363P

5-10



Brick Red

PCNT68116P

20-30



River Rouge Red

PCNT68117P

20-35



Aquatic

PCNT59117P

55-75



Bermuda Blue

PCNT58113P

25-35



Brigade Matte

PCNT59158P

10-20



High Salute

PCNT59159P

10-20



Paradise Found

PCNT49174P

10-20

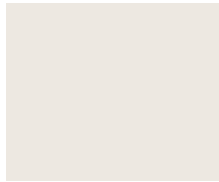


Castle Stone

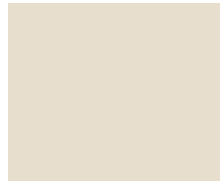
PCNT49173P

10-20

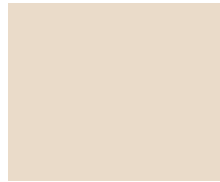
CORAFLOX PLATINUM MICA COLORS



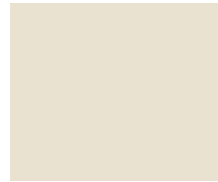
Delicate White
PCNT85112P 3-6



Blank Canvas
PCNT85111P 2-6



White Terra Cotta
PCNT29308P 60-75



White Ice Sparkle
PCNT83102P 4-8



Weathered Beige Texture
PCNT25187P 2-6



Bright Silver
PCNT75235P 30-40



Silver
PCNT75236P 15-25



Platinum Mica
PCNT75233P 15-25



Forged Steel
PCNT75243P 15-25



Stone Hearth
PCNT75244P 3-8



Digital Gray Texture
PCNT25188P 2-6



Hamptons Gray Texture
PCNT29329P 0-4



Windswept Beach Sparkle
PCNT73144P 2-6



Virtual Sand
PCNT23136P 3-7



Champagne Bronze
PCNT25122P 20-35



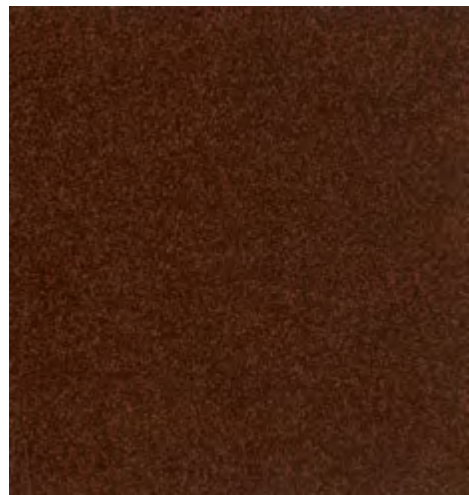
Bronzed Ochre
PCNT25216P 20-30



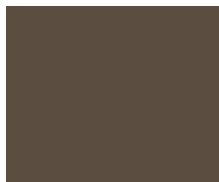
Crypto Gold Sparkle
PCNT35106P 40-50



Canyon Sparkle
PCNT25186P 60-70



Urban Rust Speckle
PCNT24111P 1-3



Northern Walnut Texture
PCNT23134P 3-7



White Sage
PCNT85109P 7-14



Olive Sprig
PCNT43103P 7-15



Woodland Sage Texture
PCNT49163P 3-7



Smoked Khaki Texture
PCNT49162P 3-7



Techno Blue Texture
PCNT59152P 3-7

TO ORDER SAMPLES
visit requestppg.com
or call 800-258-6398.

While the color codes shown are for Coraflox Platinum powder coatings, the majority are available for Envirocron 03 and 04 powder coatings as well (codes will vary). Ask your PPG representative for information.

CORAFLO PLATINUM ANODIZED, SPECIALTY AND COLORFUL SELECTIONS



White Stone Sparkle Texture
PCNT75231P 2-6



Americana White
PCNT85110P 20-30



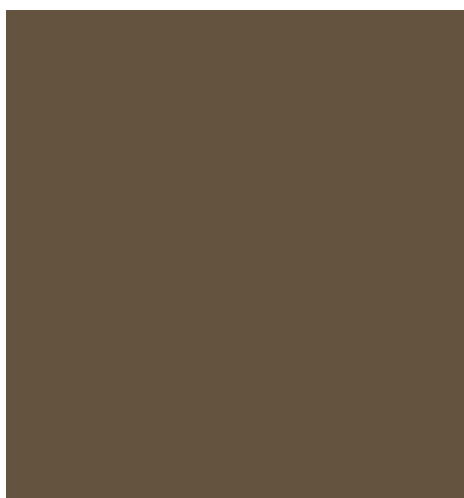
Burnished Rose Texture
PCNT65108P 35-45



Pure Clear Anodized
PCNT75223P 13-23



Anodic Clear
PCNT75155P 25-35



Champagne Anodized
PCNT25176P 10-16



Aged Gold Anodized
PCNT25177P 12-18



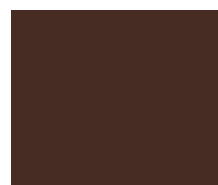
Anodized Bronze
PCNT25178P 9-15



Eco Bronze Anodized
PCNT25179P 7-13



Renew Black Anodized
PCNT99147P 2-6



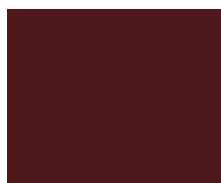
Lava Rock
PCNT23141P 45-55



Hammered Copper
PCNT25217P 40-50



Brick Red Glaze
PCNT69131P 40-50



Galaxy Red
PCTT63114 80-90



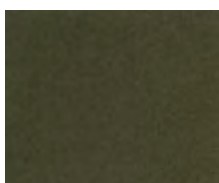
Forged Pewter
PCNT75242P 40-50



PPG VARI-COOL® Great Barrier Reef
PCNT55106P 15-25



Grassy Plains Texture
PCNT45103P 2-6



PPG VARI-COOL® Harvest Patina
PCNT45104P 20-30



Saffron Yellow
PCNT39119P 25-35



High Gloss Cobalt Blue
PCNT59150P 80+

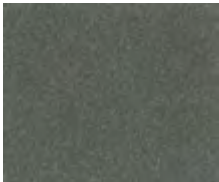
CORAFLOM PLATINUM TEXTURE / SPARKLE COLORS



Platinum
PCNT75153P 20-30



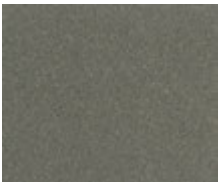
Arcadia Silver
PCNT75154P 10-20



Silverstorm
PCNT75164P 15-30



Westcott Navy Speckle
PCNT74102P 3-9



Pewter
PCNT75163P 15-30

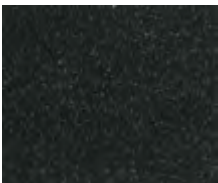


Graphite Texture
PCNT73143P 4-8

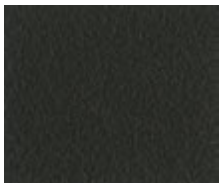
Iron Gray
PCNT74105P 1-4



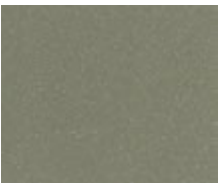
Cosmic Gray Mica
PCNT75132P 25-35



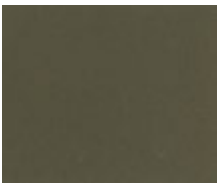
Graphite Gray
PCNT75156P 35-45



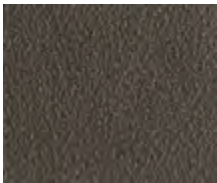
Black Flower Texture
PCNT99112P 1-4



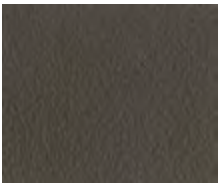
Champagne
PCNT75159P 20-35



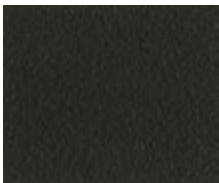
Light Bronze
PCNT25129P 15-35



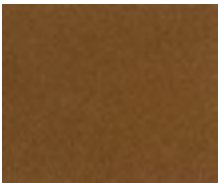
Oswego Tea Matte Texture
PCNT29362P 18-25



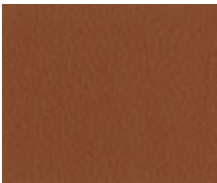
Marbled Granite Texture
PCNT23139P 2-6



Bronze Texture
PCNT29111P 7-23



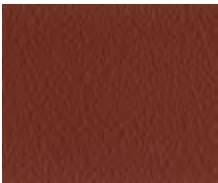
Bright Copper Metallic
PCNT25227P 30-45



Vintage Copper Texture
PCNT29341P 3-7



Speckled Spice
PCNT24110P 1-3



Fired Brick Texture
PCNT69134P 3-7



Black Rust
PCNT94100P 10-20



Interstate Blue
PCNT59129P 20-40



Skybridge
PCNT55105P 3-6



Dusty Aqua
PCNT43102P 10-15



Vining Ivy Texture
PCNT43104P 5-10



Black Magic
PCNT93105P 20-35



We protect and beautify the world®

IFS Powder Coatings

Architectural Color Collection



IFS Coatings for Architectural Applications

IFS has a world class range of powder coatings designed to protect and decorate architectural metal to the very highest standards. Our architectural powder coatings are tough, weatherable, and meet and exceed each of the AAMA performance specifications, ensuring every level of exterior durability is available.

The Architectural Color Palette

The IFS Architectural Color Collection showcases just some of the colors available in the IFS range, from classic solid shades, to fine metallics and even anodic styles. We also understand that unique projects need unique colors. With that in mind, the **IFS Color Matching Service** allows you to get the exact shade you are looking for in an environmentally responsible, durable coating. We will analyze the shade using the latest color matching technology and create a color for you to approve. What's more, you can also change the gloss, or add metallic or textures to the product. Talk to your IFS architectural representative for more information on our exceptional color matching capabilities.

The IFS Architectural Color Matching Service

- Custom color creation available
- Available in standard polyester, super durable and fluoropolymer technology
- Change the gloss, add metallics or textures
- Industry leading color matching times
- Sample panels available free of charge
- Small batches available, perfect for prototypes or one off pieces



With any coating, powder or liquid, there are some limitations on what is achievable at the higher levels of exterior durability. Quite simply, the pigments for some shades (for example, bright yellow) that will offer the durability required for these specifications, are not available. However there is a vast range of colors that are available, and will meet the exterior durability demands of the high level specifications. Similarly, not all gloss levels or metallic effects can be achieved at an AAMA 2605 level. Talk to your IFS architectural advisor for advice.

AAMA Specification	AAMA 2603	AAMA 2604	AAMA 2605
IFS Product	IFS 300SP	IFS 400SD	IFS 500FP
Product chemistry	Standard Polyester	Super Durable Polyester	100% FEVE Fluoropolymer (70% PVDF liquid equivalent)
Warranty*	No warranty	5 or 10 year warranty	10 or 20 year warranty

*Warranty supplied when applied by an IFS Certified Applicator to aluminum.

The IFS architectural range has been used on a vast array of architectural applications, from residential windows and doors, commercial store front and retail interiors, to curtain wall, louvers, scrims and screens on skyscrapers and monumental buildings.

The IFS Architectural Color Collection

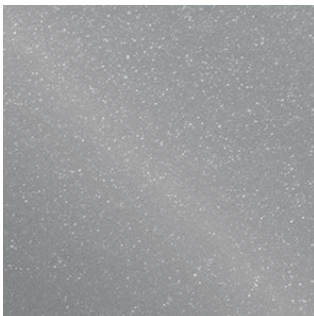
IFS architectural coatings offer a combination of great aesthetics, toughness, durability, cost effectiveness and are the obvious environmentally responsible choice. All of the colors shown on this card are available in AAMA 2603, 2604 and 2605 level products, so no matter what the project demands, we've got you covered. IFS 400SD, our super durable architectural product provides great exterior protection and improved color and gloss retention over a standard polyester product, while IFS 500FP, our world class Fluoropolymer offers the ultimate in long term durability, color and gloss retention and scratch resistance. For more information on the strict performance tests that IFS 400SD and IFS 500FP meet and exceed, please talk to your IFS representative.

Codes starting with "S" are AAMA 2604 compliant, IFS 400SD product codes.
Codes starting with "F" are AAMA 2605 compliant, IFS 500FP product codes.

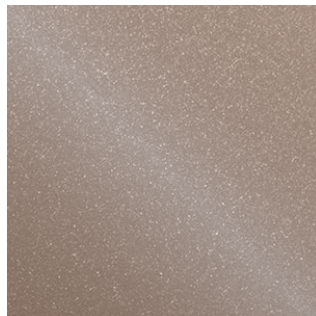
TGIC-free products also available. Please ask for details.



IFS ARCHITECTURAL METALLICS



Classic Platinum
SRSS 95565
FRSL 96595



Champagne
SRSL 95566
FRSL 96596



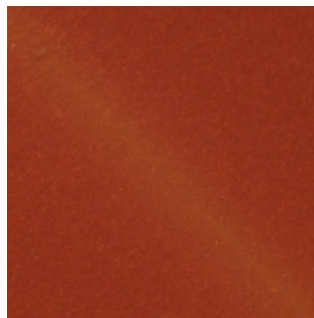
Pewter
SRSL 95567
FRSL 96597



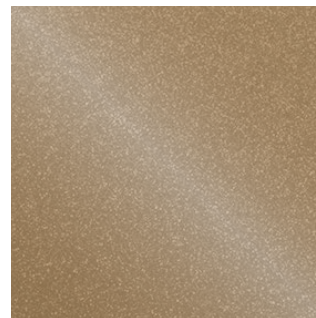
Cosmic Gray
SRSL 95568
FRSL 96598



Light Bronze
SRSL 95569
FRSL 96599



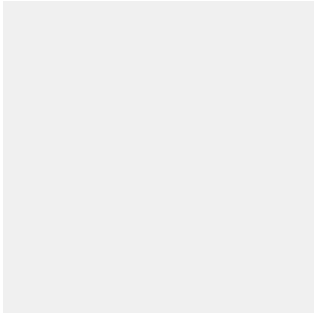
Copper
SRSS 90408
FRSL 96600



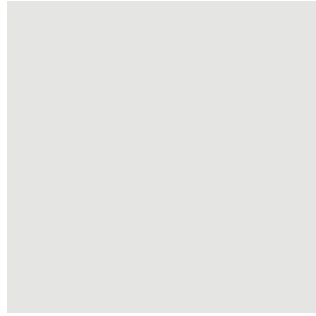
Gold Nugget
SRSS 90464
FRSL 95571

Colors are a digital representation only and are not a true reflection of the actual powder coated surface. In addition screens are not calibrated, so colors appear differently. DO NOT choose a color based on an online representation. Ask for a free color card or sample.

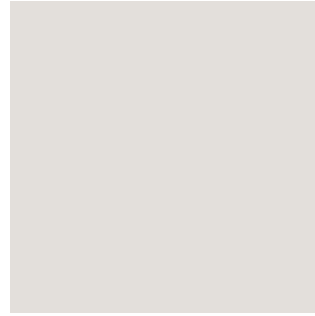
IFS ARCHITECTURAL SOLIDS



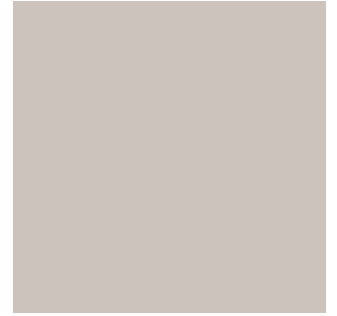
Apollo White
SRSL 82519
FRSL 82908



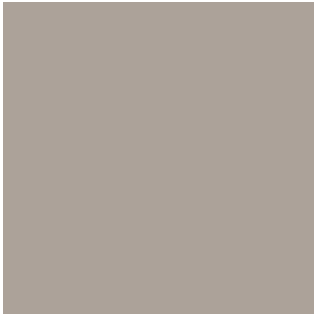
Bone White
SRSL 82520
FRSL 82909



Ivory
SRSL 45891
FRSL 46646



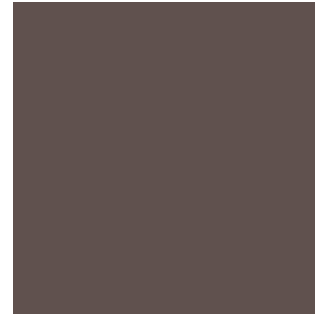
Sandstone
SRSL 45892
FRSL 46647



Seawolf
SRSL 46636
FRSL 46645



Fashion Gray
SRSL 74008
FRSL 74652



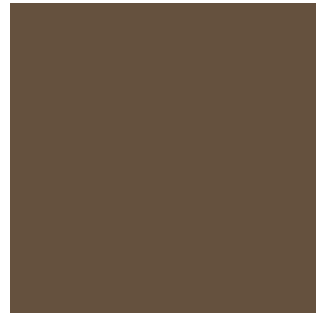
Colonial Gray
SRSL 74009
FRSL 74653



Military Light Blue
SRSL 21708
FRSL 21709



Burgundy
SRSL 62487
FRSL 62496



Antique Bronze
SRSL 45893
FRSL 46648



Black
SRSL 11386
FRSL 11390



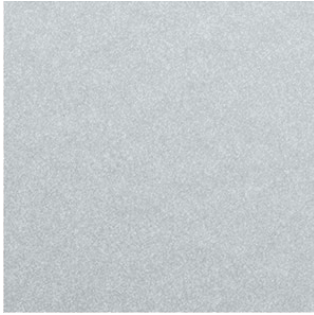
Charcoal
SRSL 74007
FRSL 74654



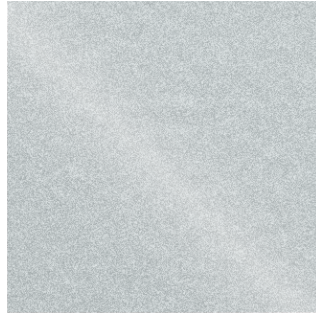
Hartford Green
SRSL 32545
FRSL 32872

Colors are a digital representation only and are not a true reflection of the actual powder coated surface. In addition screens are not calibrated, so colors appear differently. DO NOT choose a color based on an online representation. Ask for a free color card or sample.

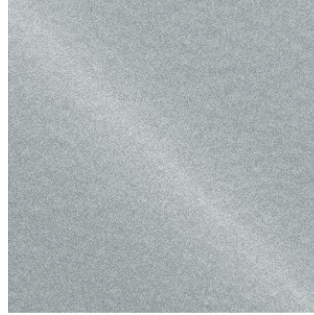
IFS ARCHITECTURAL ANODICS



Anodized Silver
SRMS 95339
FRSL 94542



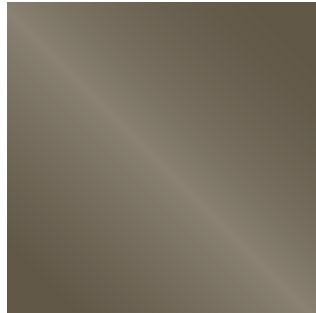
Silver Sparkle
SRSL 95572
FRSL 93652



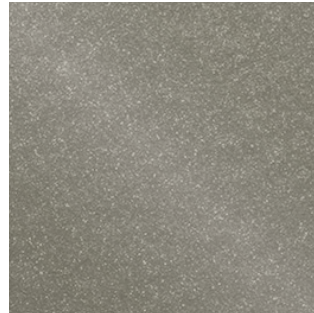
Matte Platinum
SRSM 95573
FRML 95458



Steel Blue
SRSL 95574
FRSL 95577



Dark Bronze
SRSL 95575
FRSL 95578



Medium Bronze
SRSL 95576
FRSL 95579



Codes starting with “S” are AAMA 2604 compliant, Fluoropolymer IFS 400SD product codes.
Codes starting with “F” are AAMA 2605 compliant, Fluoropolymer IFS 500FP product codes.

Colors are a digital representation only and are not a true reflection of the actual powder coated surface. In addition screens are not calibrated, so colors appear differently. DO NOT choose a color based on an online representation. Ask for a free color card or sample.



3601 N. Interstate 35
Gainesville, TX 76240
P: 940 668 1062
www.ifscoatings.com

Any recommendations contained herein or any information given by any IFS Coatings representative is based on tests and information believed to be accurate. However, since we have no control over the conditions under which our products are transported, stored, handled or used by purchasers, all recommendations and sales are made on condition that IFS Coatings will not be held responsible for any damages resulting from their use. No representative of ours has any authority to waive or change this provision.

© IFS Coatings 2020



Woodgrain Color Chart



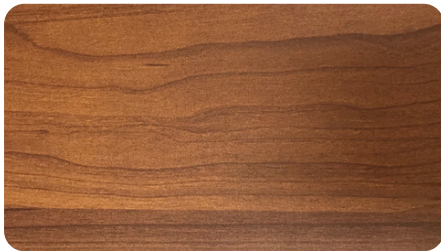
CHESTNUT



CHERRY FLAME



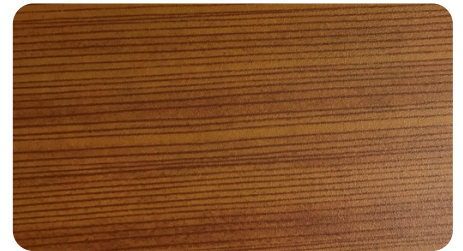
CHERRY



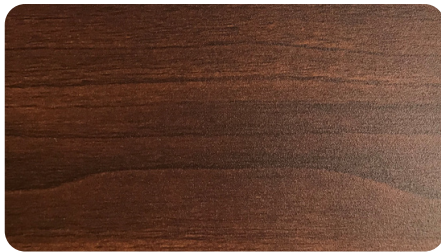
EURO CHERRY



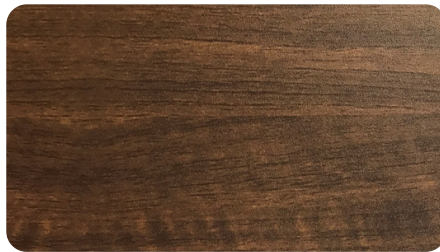
CHERRY HALF FLAME



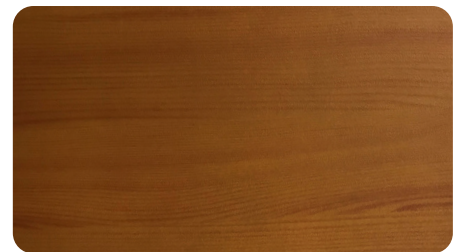
AMERICAN DOUGLAS



NATIONAL WALNUT



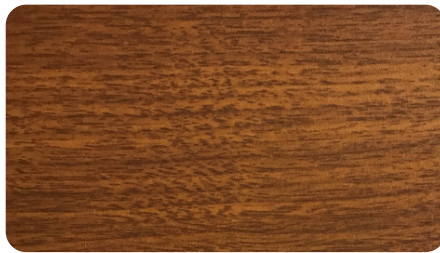
WALNUT FLAT



KNOTTY PINE



ANTIQUE OAK



GOLDEN OAK



TEAK

Representation of color and grain on chart may differ from physical samples.
Please contact us for samples before making final selection.

Woodgrain colors are specialty finishes and are excluded from our standard pricing.

