

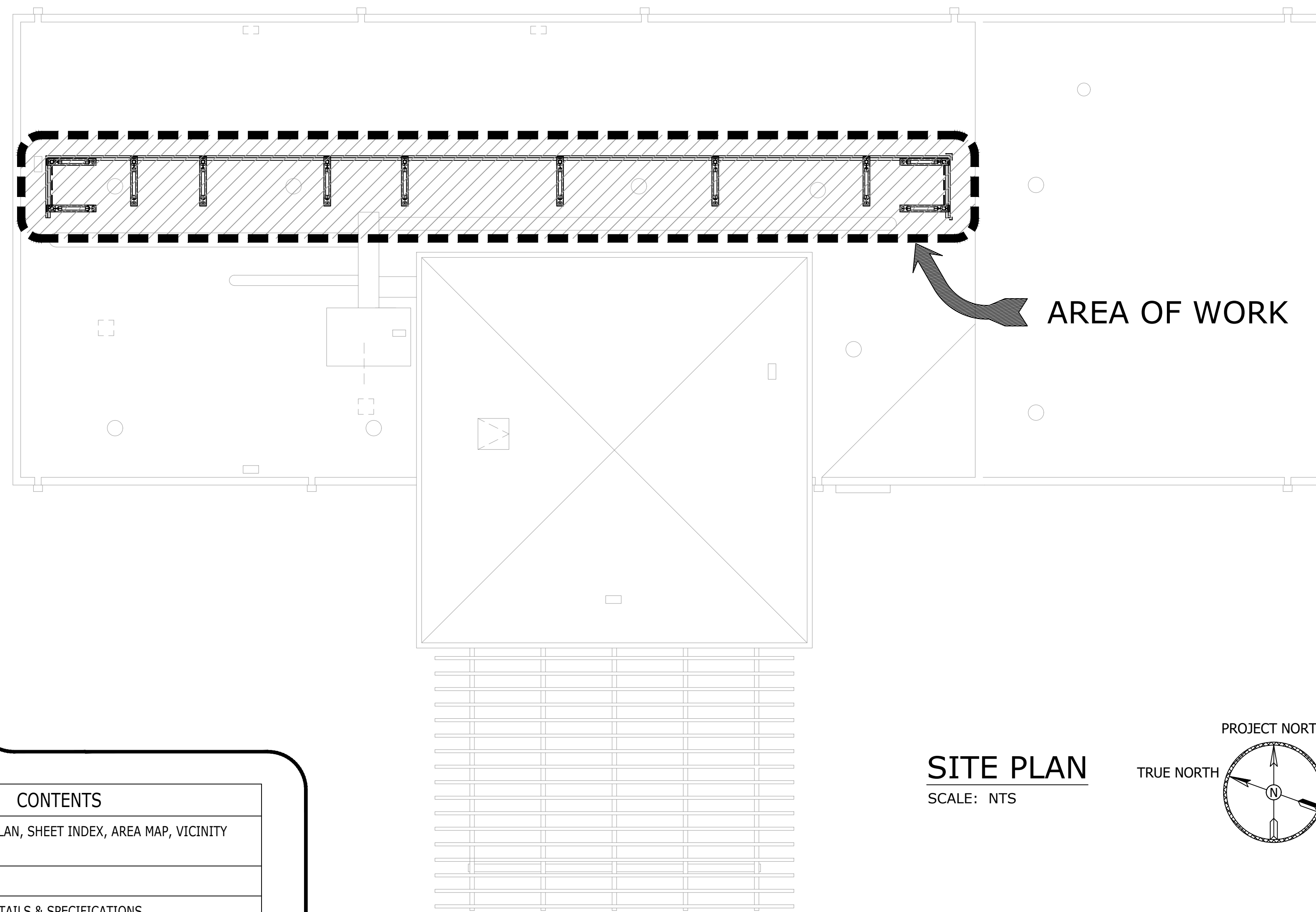
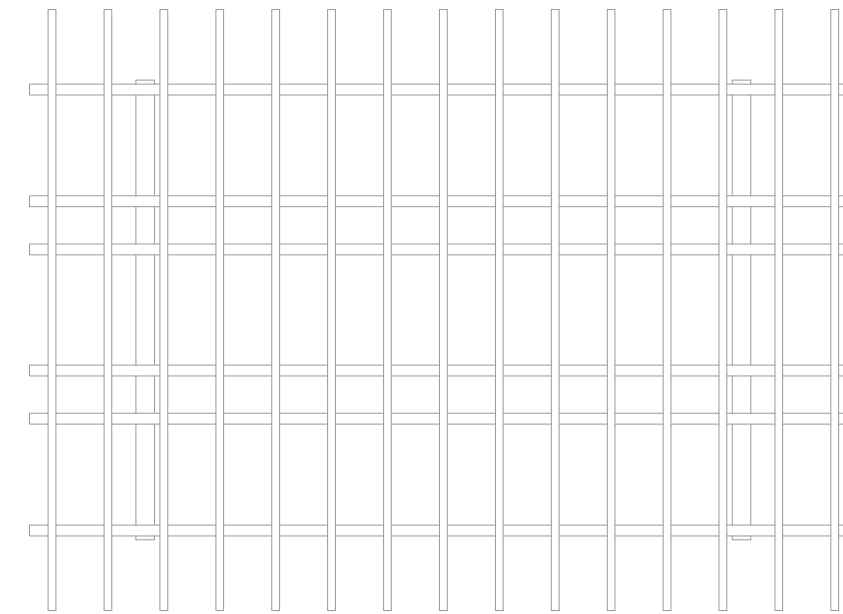
ROOFSCREEN CONSTRUCTION DOCUMENTS:

NC2D SAMPLE DRAWINGS

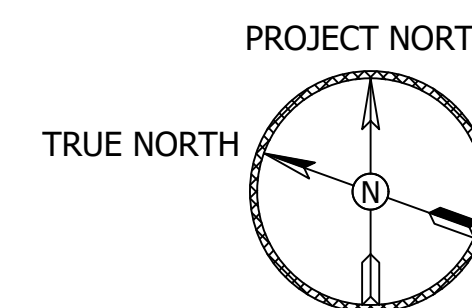
CONSTRUCTION DOCUMENT DATED: 7/9/24
 LOCATION: 347 CORAL ST
 SANTA CRUZ, CA 95060

PRELIMINARY DESIGN INFO

ENGINEERING NOT COMPLETE. THESE ARE NOT FINAL SHOP DRAWINGS



SITE PLAN
SCALE: NTS



CODE ANALYSIS

ALL WORK SHALL COMPLY WITH THE 2022 CALIFORNIA BUILDING CODE (CBC)
 RISK CATEGORY: (ASCE 7, TABLE 1-3) II
 WIND DESIGN CRITERIA: (BC FIG 1609) 92 MPH
 WIND SPEED: (BC FIG 1609) C
 WIND EXPOSURE: (BC 1609.4.3) C
 C&C WIND PRESSURE: (ASCE 7.30.4-1) XXXX PSF

SEISMIC DESIGN CRITERIA: (ASCE 7, TABLE 11.5-1) XXXX
 IMPORTANCE FACTOR: (ASCE 7, TABLE 11.5-1) XXXX
 SITE CLASS: (ASCE 7, TABLE 11.4-2) XXXX
 S1: XXXX
 SD1: XXXX
 SEISMIC DESIGN CATEGORY: XXXX

**PRELIMINARY DESIGN
 ENGINEERING PENDING
 CUSTOMER APPROVAL**

MATERIAL SPECIFICATIONS

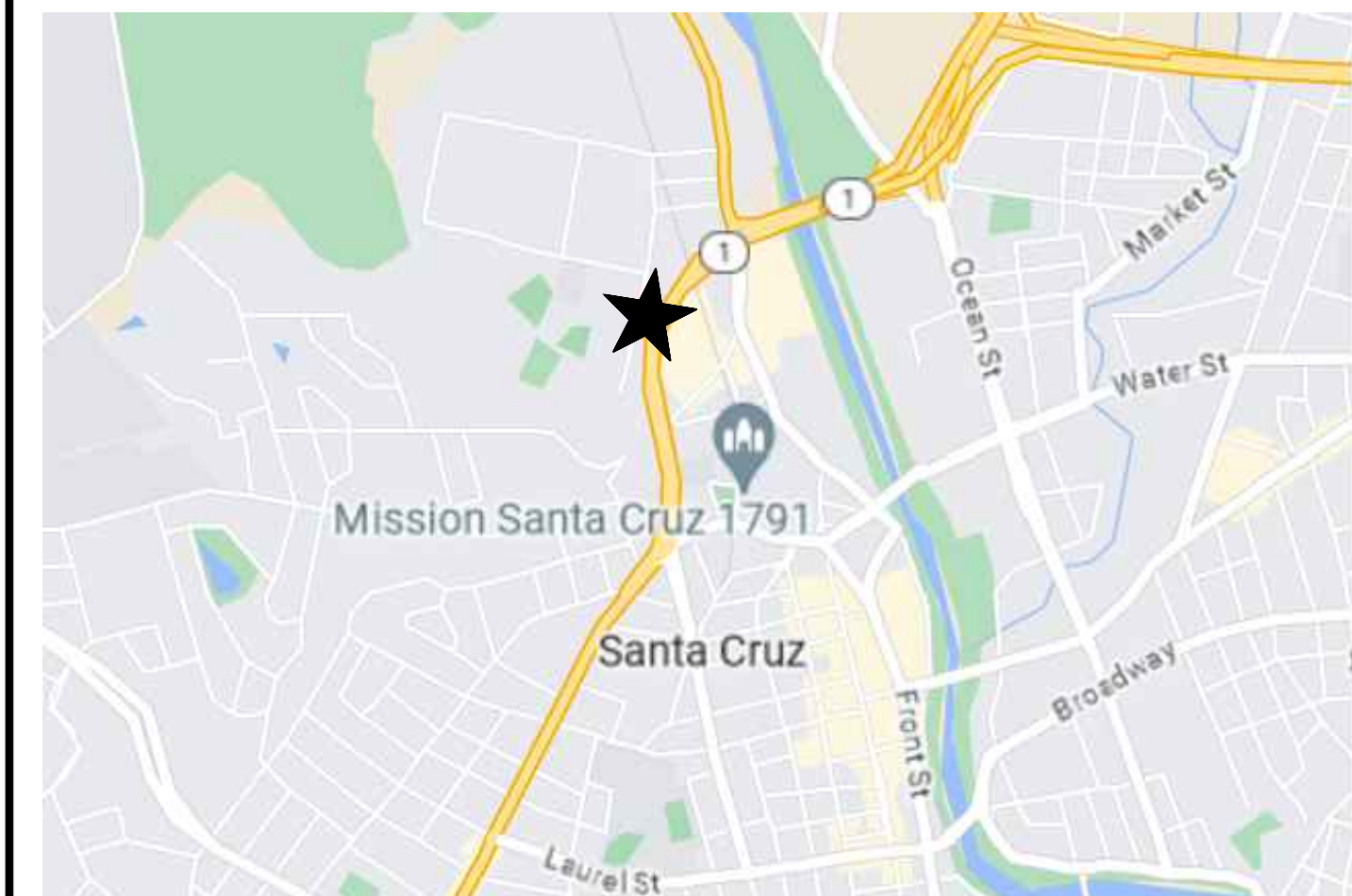
STRUCTURAL STEEL & MISCELLANEOUS/IRON:
 ROUND TUBING: GALVANIZED 16 GA ASTM A500 GRADE B, MIN Fy = 40 KSI
 GALVANIZED 11 GA ASTM A500 GRADE C, MIN Fy = 50 KSI
 PROPRIETARY PARTS: POLYESTER POLYURETHANE POWDER COATED
 ASTM A1008-CS TYPE A, Fy = 34 KSI
 BASE SUPPORT BASE PLATE: ASTM A36, Fy = 36 KSI
 STAINLESS STEEL AISI TYPE 304, Fy = 31.2 KSI
 6063 T6, Ftu = 30 KSI
 ASTM F593C/G (AISI 18-8)
 AISI 18-8
 E70XX
 ITW BUILDEX/W/ CLIMASEAL (ESR 1976) OR APPROVED EQUAL

SCOPE OF WORK

NEW ROOFSCREEN

NOTE: EVALUATION OF EXISTING ROOF SHEATHING, ROOF FRAMING, AND BUILDING FOR NEW MECHANICAL EQUIPMENT AND SCREEN LOADS SHALL BE PROVIDED BY OTHERS. LOAD REACTIONS AT BASE SUPPORTS ARE LISTED ON FRAME SPECIFICATIONS.

AREA MAP



VICINITY MAP



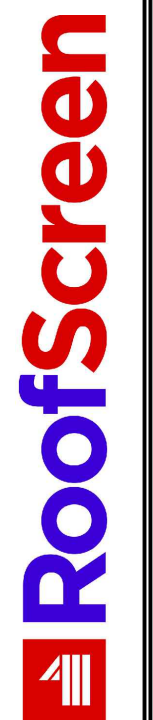
SHEET INDEX

SHEET	CONTENTS
RS-0	CODE ANALYSIS, SITE PLAN, SHEET INDEX, AREA MAP, VICINITY MAP, SCOPE OF WORK
RS-1	ROOFSCREEN PLAN
RS-2	ROOFSCREEN FRAME DETAILS & SPECIFICATIONS
RS-3	ROOFSCREEN PART/ASSEMBLY DETAILS

REV	DESCRIPTION	BY	DATE
1	CONSTRUCTION DOCUMENTS	SS	07/09/24

NC2D SAMPLE DRAWINGS
 347 CORAL ST, SANTA CRUZ, CA 95060

ROOFSCREEN MFG., INC.
 347 CORAL STREET
 SANTA CRUZ, CA 95060
 INFO@ROOFSCREEN.COM



ROOFSCREEN COVER SHEET

DRAWN BY: SS
 CHECKED BY: KS
 JOB NUMBER: P5555

SHEET
RS-0

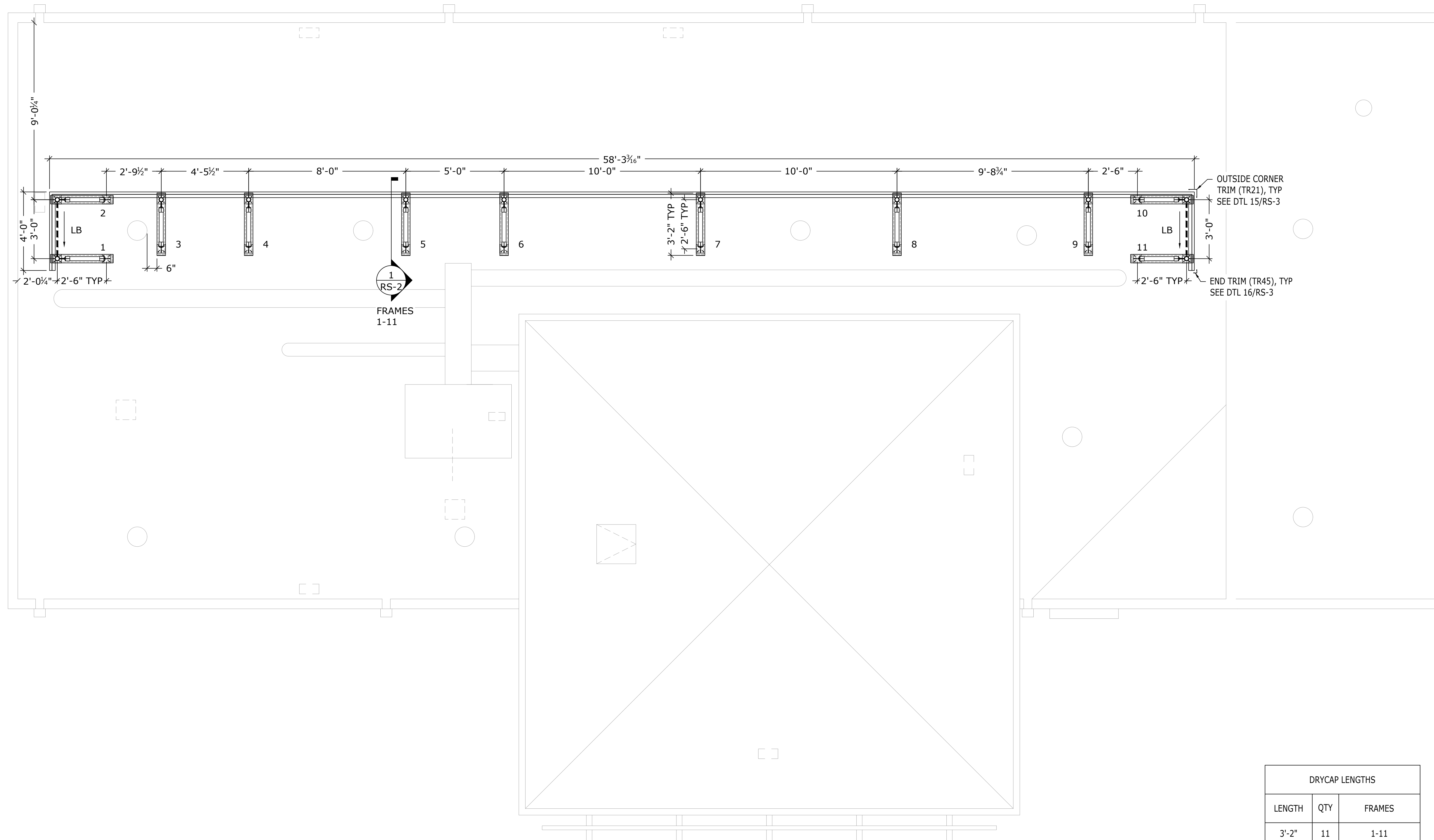
NOTES:
 1. THE ACCURACY OF THE DATA USED TO CREATE THIS LAYOUT HAS NOT BEEN FIELD VERIFIED. THE AS-BUILT LOCATIONS OF ROOF FRAMING MEMBERS AND MECHANICAL EQUIPMENT SHALL BE FIELD VERIFIED. ALL DISCREPANCIES SHALL BE BROUGHT TO THE ATTENTION OF THE ENGINEER PRIOR TO PROCEEDING WITH WORK.

2. NOTIFY THE ENGINEER IF FIELD VERIFIED DIMENSIONS VARY MORE THAN ±3".

3. SEE SHT RS-2 FOR ROOFSCREEN HORIZONTAL LOUVER LAYOUT.

APPROVAL / REVIEW AUTHORITY:
 PLEASE REVIEW THIS DRAWING CAREFULLY. IT REPRESENTS OUR INTERPRETATION OF THE CONTRACT DOCUMENTS HOWEVER, ROOFSCREEN MFG. ASSUMES NO RESPONSIBILITY FOR THE ACCURACY OF THE INFORMATION SHOWN ON THE DESIGN DRAWINGS. THIS IS THE RESPONSIBILITY OF THE BUYER.

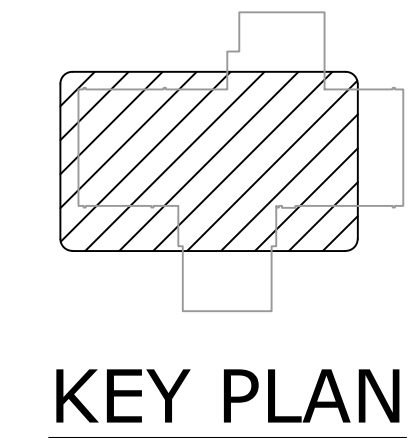
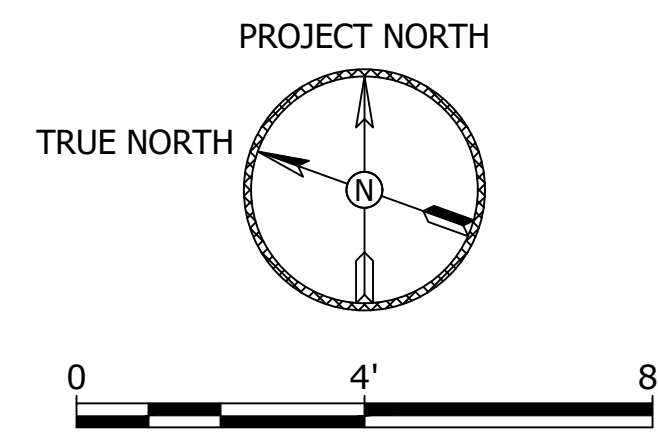
UNLESS NOTED OTHERWISE ON THIS DRAWING, WHEN IT IS RETURNED FROM APPROVAL, IT WILL BE ASSUMED THAT ALL INFORMATION SHOWN HEREIN HAS THE AFFIRMATION OF THE APPROVAL AUTHORITY. SUBSEQUENT CHANGES TO INFORMATION SHOWN ON THESE DRAWINGS AFTER FIRST SUBMISSION WILL BE CONSIDERED AS CONTRACT CHANGES.



DRYCAP LENGTHS		
LENGTH	QTY	FRAMES
3'-2"	11	1-11

PRELIMINARY DESIGN INFO
 ENGINEERING NOT COMPLETE. THESE ARE NOT FINAL SHOP DRAWINGS

ROOFSCREEN PLAN
 SCALE: 3/8" = 1'



- LEGEND**
- # ROOFSCREEN FRAME W/ FRAME #
 - ROOFSCREEN DRYCAP (DC10) DTL 1-8/RS-3 & <E> 4X8 SLEEPER (BY OTHERS)
 - LB LATERAL BRACE (DTL 11/RS-3) OFFSET ON PLAN FOR CLARITY ONLY ARROW INDICATES DOWN SLOPE
 - PANELS
 - HAT CHANNEL (H13) AND SPLICE (H14) AS REQUIRED (DTL 12/RS-3)

REV	DESCRIPTION	BY	DATE
SS	CONSTRUCTION DOCUMENTS	SS	07/09/24

NC2D SAMPLE DRAWINGS
 347 CORAL ST. SANTA CRUZ, CA 95060
 INFO@ROOFSCREEN.COM

ROOFSCREEN MFG., INC.
 347 CORAL STREET
 SANTA CRUZ, CA 95060
 INFO@ROOFSCREEN.COM

RoofScreen

ROOFSCREEN PLAN

DRAWN BY: SS
 CHECKED BY: KS
 JOB NUMBER: P5555
 SHEET

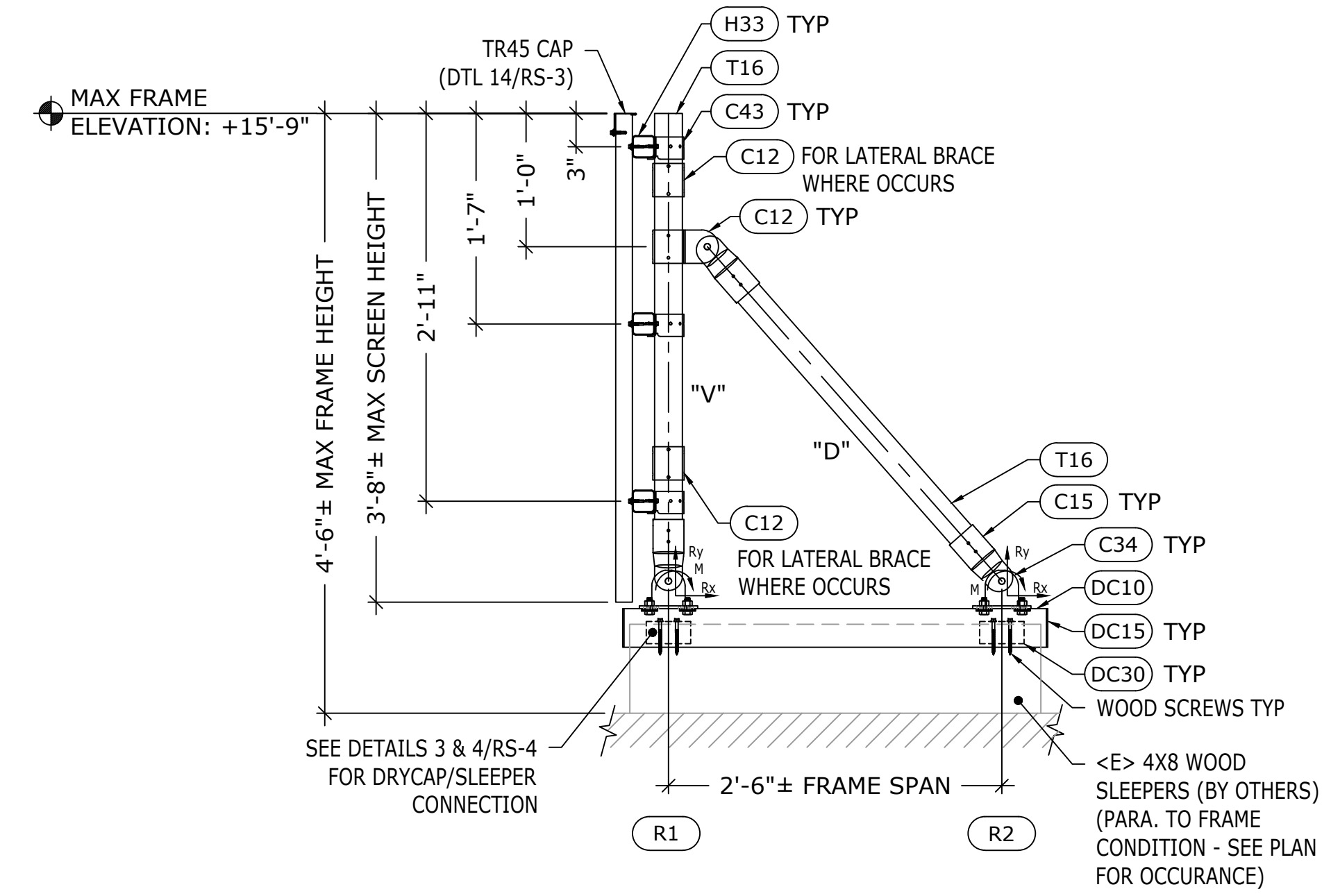
RS-1

ROOFSCREEN INSTALLATION NOTES:

- ALL WORK SHALL BE PERFORMED EXCLUSIVELY BY TRAINED COMPETENT PERSONNEL AND SHALL COMPLY WITH ALL APPLICABLE SAFETY LAWS, REGULATIONS, PROGRAMS AND PRACTICES TO ENSURE THE SAFETY OF ALL PEOPLE LOCATED ON THE WORK SITE.
- TOP OF SCREEN ELEVATION SHALL BE UNIFORM ALONG FULL LENGTH OF WALL AND SHALL NOT EXCEED MAX ELEVATION SHOWN.
- FRAME DIMENSIONS SHOWN ARE FOR THE TALLEST FRAME WHERE THE ROOF IS AT ITS LOWEST ELEVATION. FRAME TUBES WILL BE PRE-CUT AND DELIVERED TO THESE DIMENSIONS. FRAMES INSTALLED WHERE ROOF IS AT HIGHER ELEVATIONS MAY REQUIRE FIELD TRIMMING OF THE VERTICAL AND DIAGONAL TUBE LENGTHS TO KEEP TOP OF SCREEN ELEVATION LEVEL.
- LASER MEASURING IS RECOMMENDED PRIOR TO FIELD CUTTING.
- ENSURE DRYCAP IS CENTERED ON SLEEPERS.
- INSTALL FRONT BRACKETS IN A STRAIGHT LINE USING LASER LEVEL OR STRING LINE. THERE IS NO FRONT TO BACK ADJUSTMENT FOR THE FRAME CONFIGURATION USED ON THIS PROJECT.
- WHEN USING $\frac{3}{8}$ " LAG SCREWS TO FASTEN BRACKET TO WOOD STRUCTURAL MEMBERS, IT IS RECOMMENDED TO DRILL A 15/64 PILOT HOLE THE FULL DEPTH OF THE LAG SCREW THREADS.
- WHEN ATTACHING DC10 OVER DC30, IT IS RECOMMENDED TO DRILL A 15/64 PILOT HOLE THROUGH BOTH THE DC30 AND DC10. USE PROVIDED STOPPER ON DRILL BIT TO ENSURE THAT BLOCKING IS NOT PUNCTURED. SEE DTL 9/RS-3.
- THE CONTRACTOR SHALL BE RESPONSIBLE FOR THE WATER-TIGHTNESS OF THE EXISTING ROOF DECK. FLASHING AND ROOFING OF SLEEPERS SHALL BE PER ROOFING SYSTEM MANUFACTURER'S REQUIREMENTS. VERIFICATION OF COMPLIANCE WITH ROOF WARRANTY AND PRE-APPROVAL FROM ROOFING SYSTEM MANUFACTURER, IF REQUIRED, SHALL BE PERFORMED BY OTHERS.
- ROOF FLASHING BOOTS SHALL TERMINATE FLUSH WITH TOP OF WOOD SLEEPERS WHEN POSSIBLE BUT NOT MORE THAN $\frac{1}{2}$ " BELOW.
- APPROPRIATE CARE SHALL BE TAKEN TO ELIMINATE THE POSSIBILITY OF DAMAGE TO EXISTING DECK AND ROOFING SYSTEM. CONSTRUCTION MATERIALS SHALL NOT BE STORED ON THE ROOF DECK UNLESS APPROPRIATE MEASURES ARE TAKEN TO PROTECT THE ROOF FROM DAMAGE.
- MANY OF THE FRAME CONNECTOR FITTINGS HAVE EXTRA SCREW HOLES. SEE ROOFSCREEN SPECIFICATIONS ON THIS SHEET FOR THE CORRECT NUMBER OF SCREWS PER FITTING.
- AFTER ROOFSCREEN PANELS ARE INSTALLED, ATTACH TRIM TO PANELS WITH COLOR-MATCHED SELF-DRILLING SCREWS AT 12" O.C. ALONG EACH LEG OF TRIM AT CORNERS AND ALONG SINGLE LEG AT ENDS, AND AT 3'-0" O.C. ALONG CAP TRIM PER DTL 14/RS-3.
- APPLY ANTI-SEIZING LUBRICANT TO ALL STAINLESS BOLTS DURING INSTALLATION TO PREVENT GALLING.
- AFTER INSTALLATION IS COMPLETE, DUST OFF AND REMOVE ALL METAL SHAVINGS FROM DRY CAPS AND FINISHED ROOF SURFACE TO PREVENT SURFACE RUST AND STAINING.
- SLEEPER AND ROOFING MATERIAL NOT TO EXCEED $\frac{1}{4}$ " THICKNESS
- FINISHED SLEEPER MUST BE $\frac{1}{2}$ " SHORTER THAN THE DRYCAP ON EACH END.
- REFER TO DRYCAP INSTALLATION MANUAL FOR MORE INSTRUCTIONS ON INSTALLING DRYCAP.

ROOFSCREEN SPECIFICATIONS:

- P** PANEL: 7.2 RIB $1\frac{1}{2}$ " DEEP, 24ga, ORIENT VERTICAL, FASTEN TO HORIZONTAL HAT CHANNEL W/ COLOR-MATCHING #12-14 X 1" LONG T/3 "TEK" SCREW W/ NEOPRENE WASHER - ROOFSCREEN P/N "S16", (1) TOTAL PER DOWN FLUTE, PER DTL 13/RS-3, AND PER MANUFACTURER'S SPECS. DEFLECTION LIMIT = L/180
- H33** 2" X 2", 14ga ORIENT HORIZONTAL. SPLICE IN FIELD WITH "H32" PER DTL 12/RS-3
- T16** HSS 2.500 OD X 0.065 (16ga), Fy= 40ksi
- C43** SQUARE TO ROUND CONNECTOR:
CONN TO H33 GIRT W/ #12-14 X 1" LONG T/3 TEK SCREW - ROOFSCREEN P/N "S10", (2) EA LEG TYP, (4) TOTAL.
CONN TO T11 TUBING W/ #12-14 X 1" LONG T/3 TEK SCREW - ROOFSCREEN P/N "S10", (3) TOTAL. SEE DTL 8/RS-3.
- C15** END CONNECTOR:
CONN TO TUBE W/ #12-14 X 1" LONG T/3 "TEK" SCREWS - ROOFSCREEN P/N "S10", (2) EA SIDE TYP. (4) TOTAL
CONN TO T-BRACKET OR FIELD CONN W/ $\frac{1}{2}$ " X $1\frac{1}{4}$ " LONG ANSI 18-8 STAINLESS STEEL BOLT - ROOFSCREEN P/N "B13", LOCKWASHER - P/N "W10" AND NUT - P/N "N10".
- C12** FIELD CONNECTOR:
CONN TO TUBE W/ #12-14 X 1" LONG T/3 "TEK" SCREWS - ROOFSCREEN P/N "S10", (2) EA SIDE TYP. (4) TOTAL
- DC10** DRYCAP:
CONN TO DRYCAP CLEAT USING $\frac{1}{4}$ "-20 X $1\frac{1}{2}$ " LONG THREAD CUTTING SCREW - ROOFSCREEN P/N "S41", (2) EA SIDE @ CLEAT LOCATION. PRE-DRILL PRIOR USING $\frac{3}{16}$ " DRILL-BIT.
- DC30** DRYCAP STEEL CLEAT:
CONN TO MIN 4X8 WOOD SLEEPER USING $\frac{1}{4}$ " X $4\frac{1}{2}$ " LONG SS SDS WOOD SCREW - ROOFSCREEN P/N "S43", (4) EA CLEAT TYP. ALIGN W/ T-BRACKET BASE SUPPORT
- DC15** DRYCAP END CAP:
CONN TO END OF DRYCAP EXTRUSION THROUGH EXTRUDED SCREW BOSSES W/#6 X $\frac{3}{4}$ " LONG DRIVE SCREW - ROOFSCREEN P/N "S42" (6) PER END CAP TYP.
- C34** T-BRACKET BASE SUPPORT:
CONN TO DRYCAP OVER WOOD SLEEPER (DESIGNED AND SUPPLIED BY OTHERS MIN 4x8) W/ $\frac{1}{2}$ " X $1\frac{1}{4}$ " LONG BOLT - P/N "B13", FLAT WASHER - P/N "W26", AND NUT - P/N "N10" (4) TOTAL PER C34 DTLS 1, 3 & 4/RS-3, ORIENT BOLT UPSIDEDOWN SO THAT BOLT HEAD IS INSIDE DRYCAP CHANNELS. TIGHTEN NUT 1/3 TURN PAST SNUG-TIGHT.



TUBE FRAME AT SPACING PER PLAN
SCALE: NTS **1** FRAMES 1-11

ROOFSCREEN REACTIONS:

EVALUATION OF THE EXISTING ROOF SHEATHING, ROOF FRAMING AND BUILDING FOR NEW MECHANICAL EQUIPMENT AND SCREEN LOADS SHALL BE PERFORMED BY OTHERS, AS REQUIRED PER EVALUATION, REINFORCEMENT SHALL BE PROVIDED BY OTHERS. ANALYSIS SHALL BE DONE BY A LICENSED PROFESSIONAL ENGINEER. ROOFSCREEN REACTIONS PROVIDED ARE BASED ON THE DESIGN CRITERIA ON SHEET RS-0. THE MAXIMUM ALLOWABLE STRESS DESIGN (0.6 FACTOR APPLIED TO WIND LOAD) REACTIONS AT THE BASE ARE AS FOLLOWS:

WIND:

R1 $R_x = \pm XX$ lbs SHEAR AND $R_y = \pm XX$ lbs TENSION/COMPRESSION AND $M_z = \pm XX$ ft-lbs MOMENT

R2 $R_x = \pm XX$ lbs SHEAR AND $M_z = \pm XX$ ft-lbs MOMENT

DEAD:

R1 $R_x = XX$ lbs SHEAR

R2 $R_x = XX$ lbs SHEAR AND $R_y = XX$ lbs COMPRESSION

MAXIMUM HEIGHT REFERS TO MAXIMUM HEIGHT ABOVE AVERAGE LEVEL OF ADJOINING GROUND ADJACENT TO THE BUILDINGS.

ALL OTHER ARRANGEMENTS REQUIRE ENGINEER'S APPROVAL.

PRELIMINARY DESIGN INFO

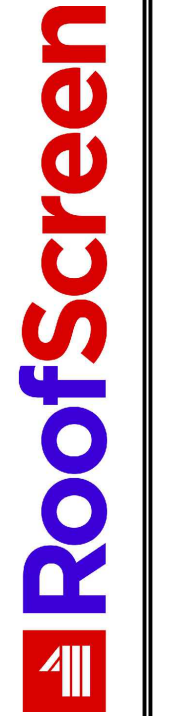
ENGINEERING NOT COMPLETE. THESE ARE NOT FINAL SHOP DRAWINGS

REV	DESCRIPTION	BY	DATE
1	CONSTRUCTION DOCUMENTS	SS	07/09/24

NC2D SAMPLE DRAWINGS

347 CORAL ST. SANTA CRUZ, CA 95060

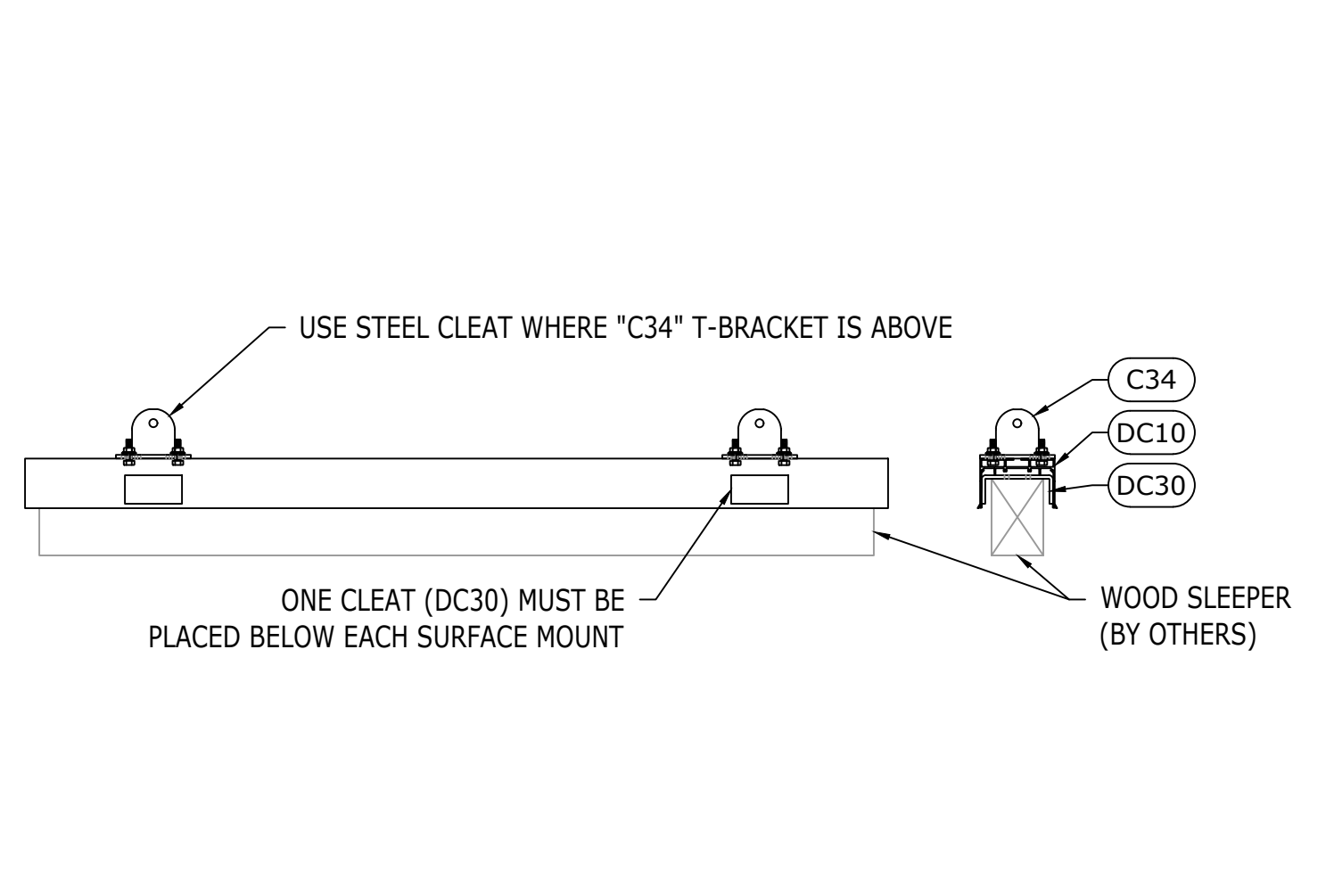
ROOFSCREEN MFG., INC.
347 CORAL STREET
SANTA CRUZ, CA 95060
TEL: 831.426.1111
INFO@ROOFSCREEN.COM



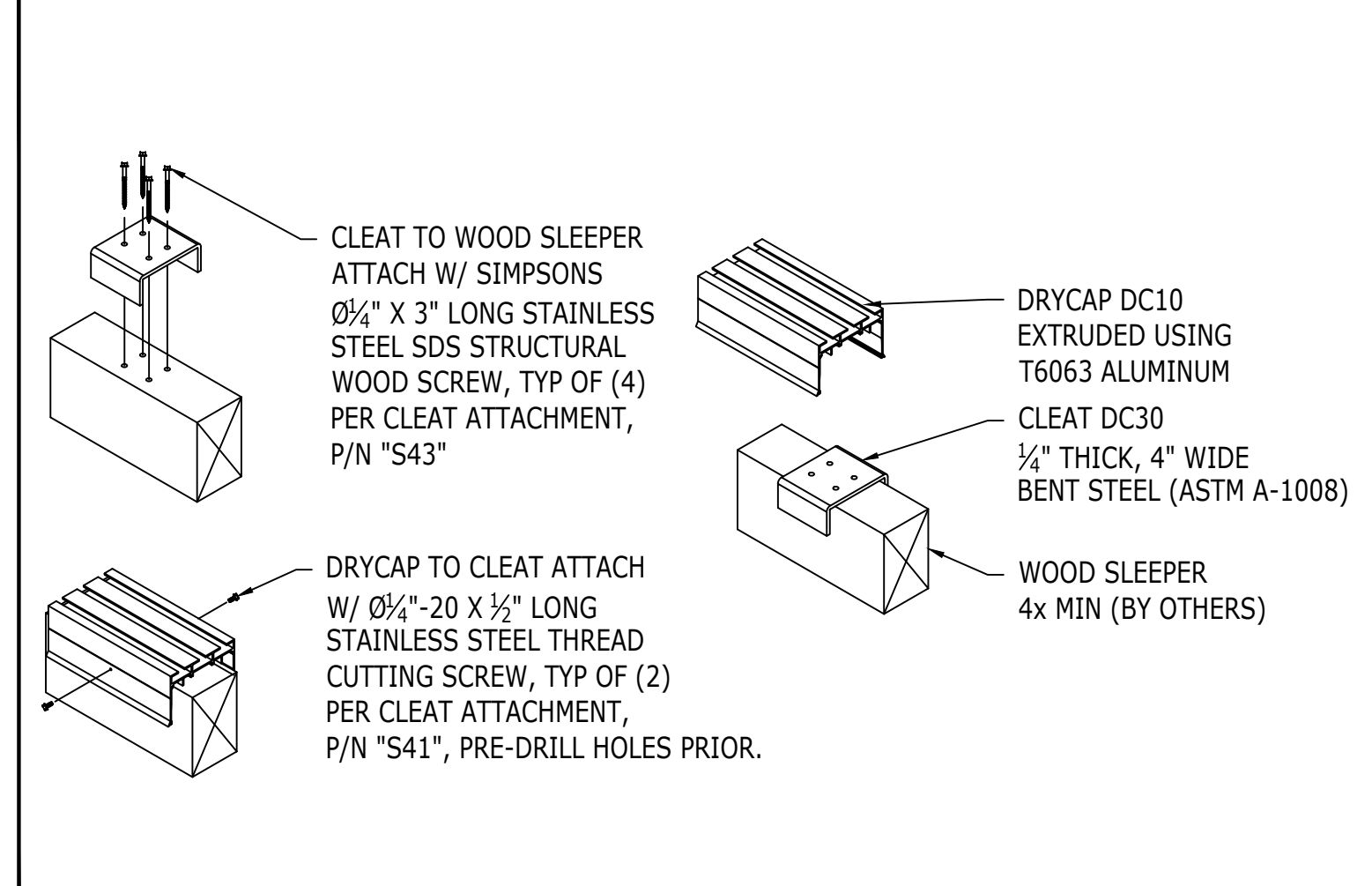
ROOFSCREEN FRAME DETAILS & SPECIFICATIONS

DRAWN BY: SS
CHECKED BY: KS
JOB NUMBER: P5555
SHEET

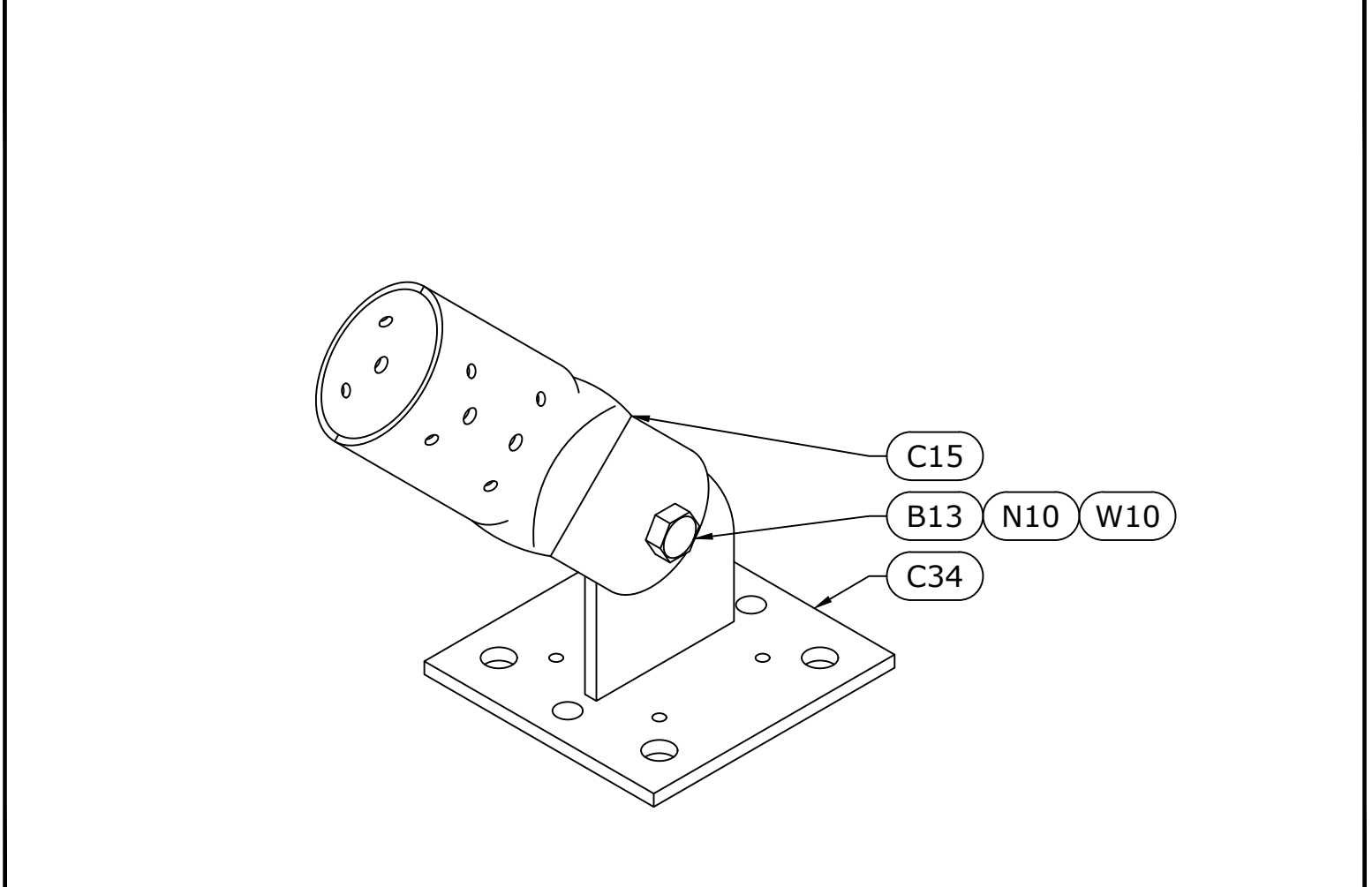
RS-2



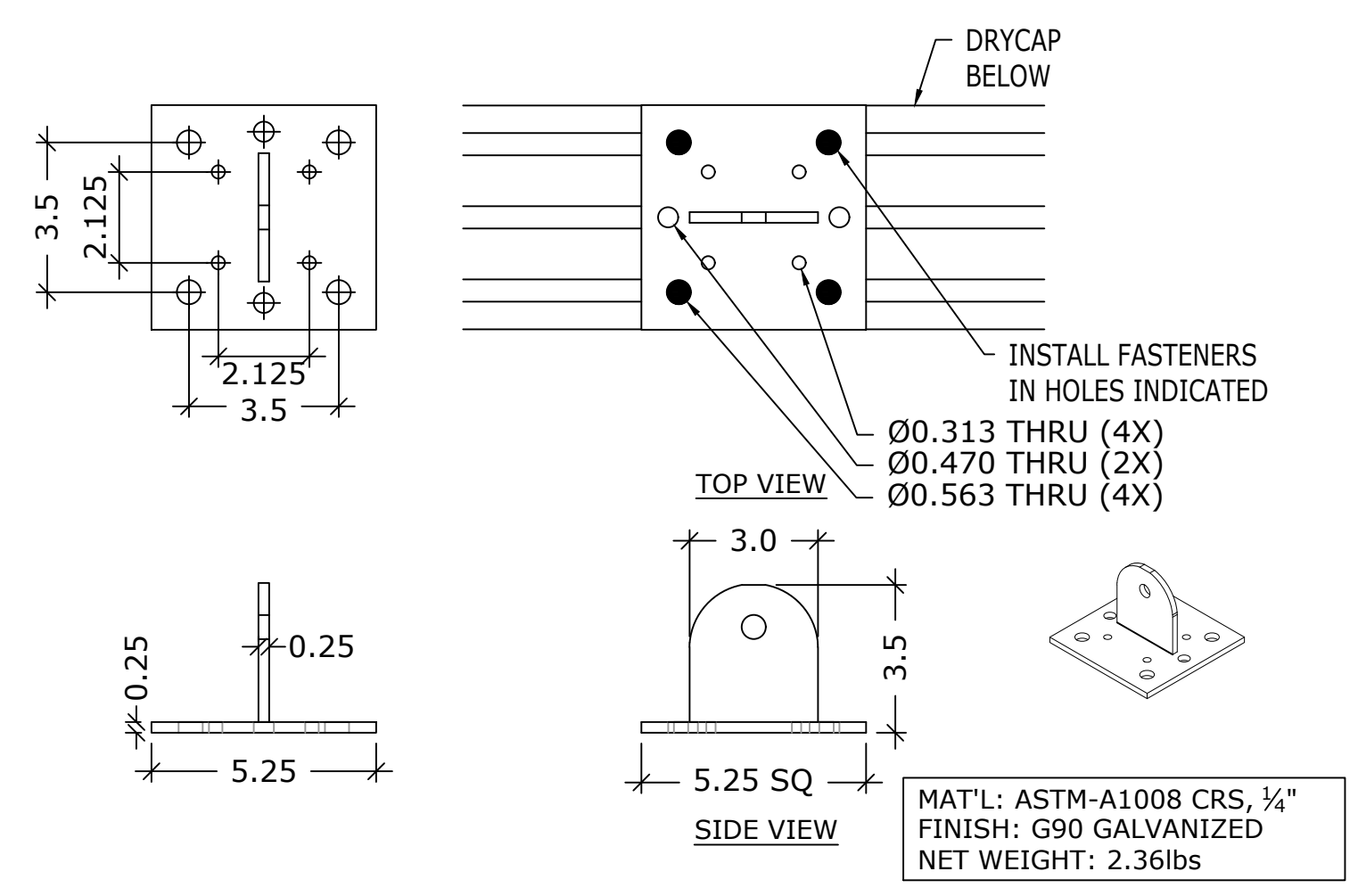
4 DRYCAP ASSEMBLY SCALE: NTS



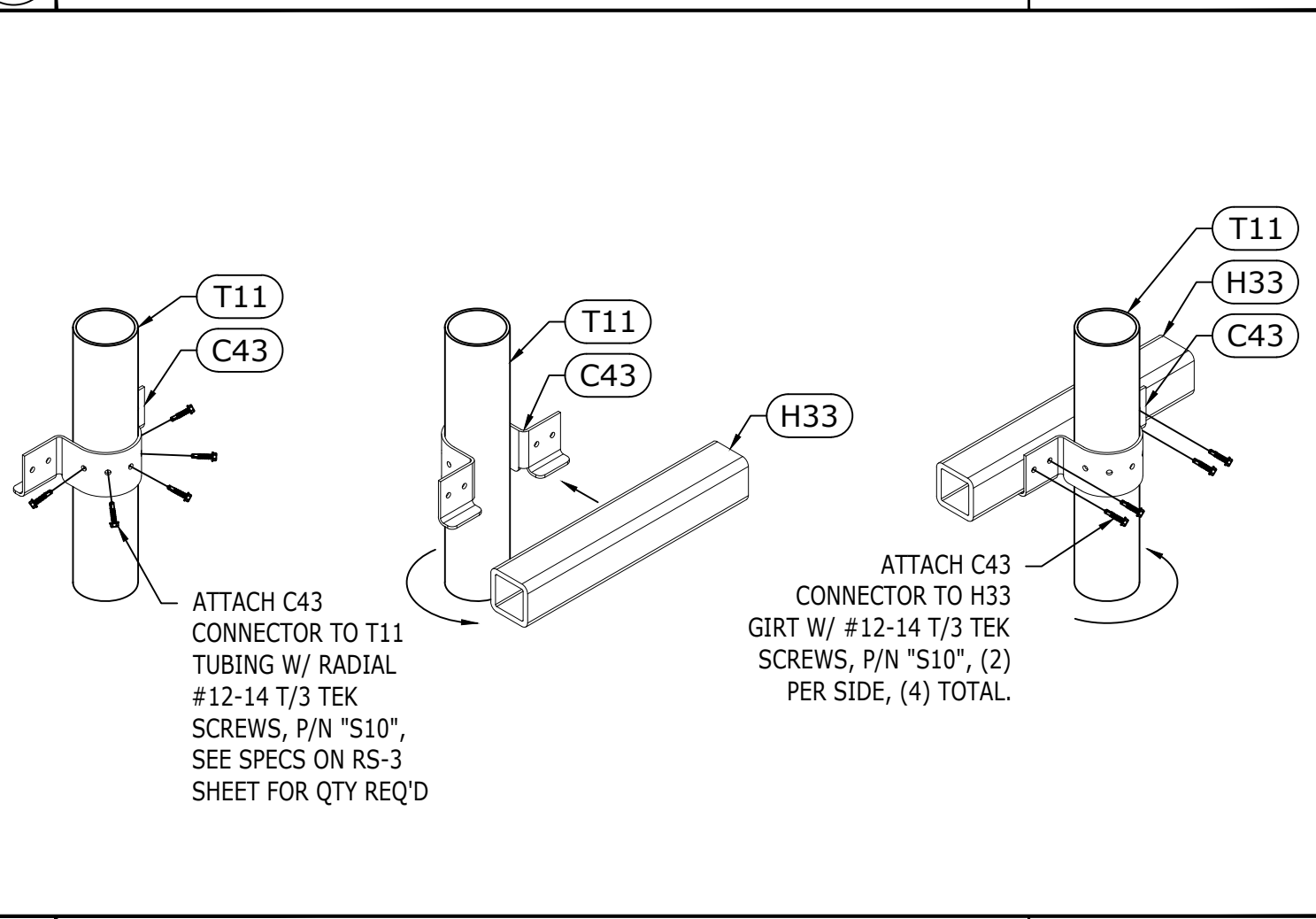
3 DRYCAP ASSEMBLY SCALE: NTS



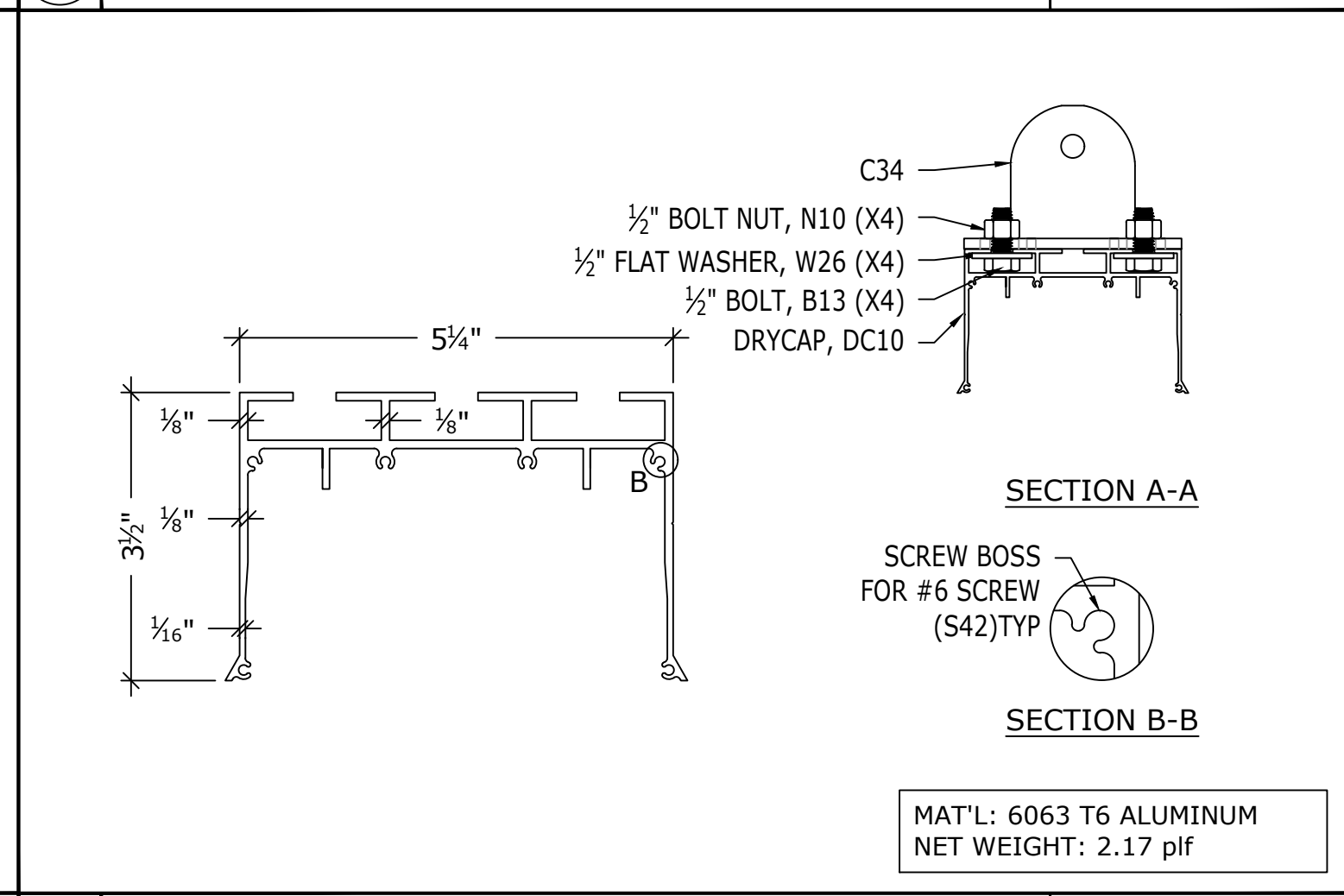
2 A65 T-BRACKET 5" X 5", 2 1/2" END SCALE: NTS



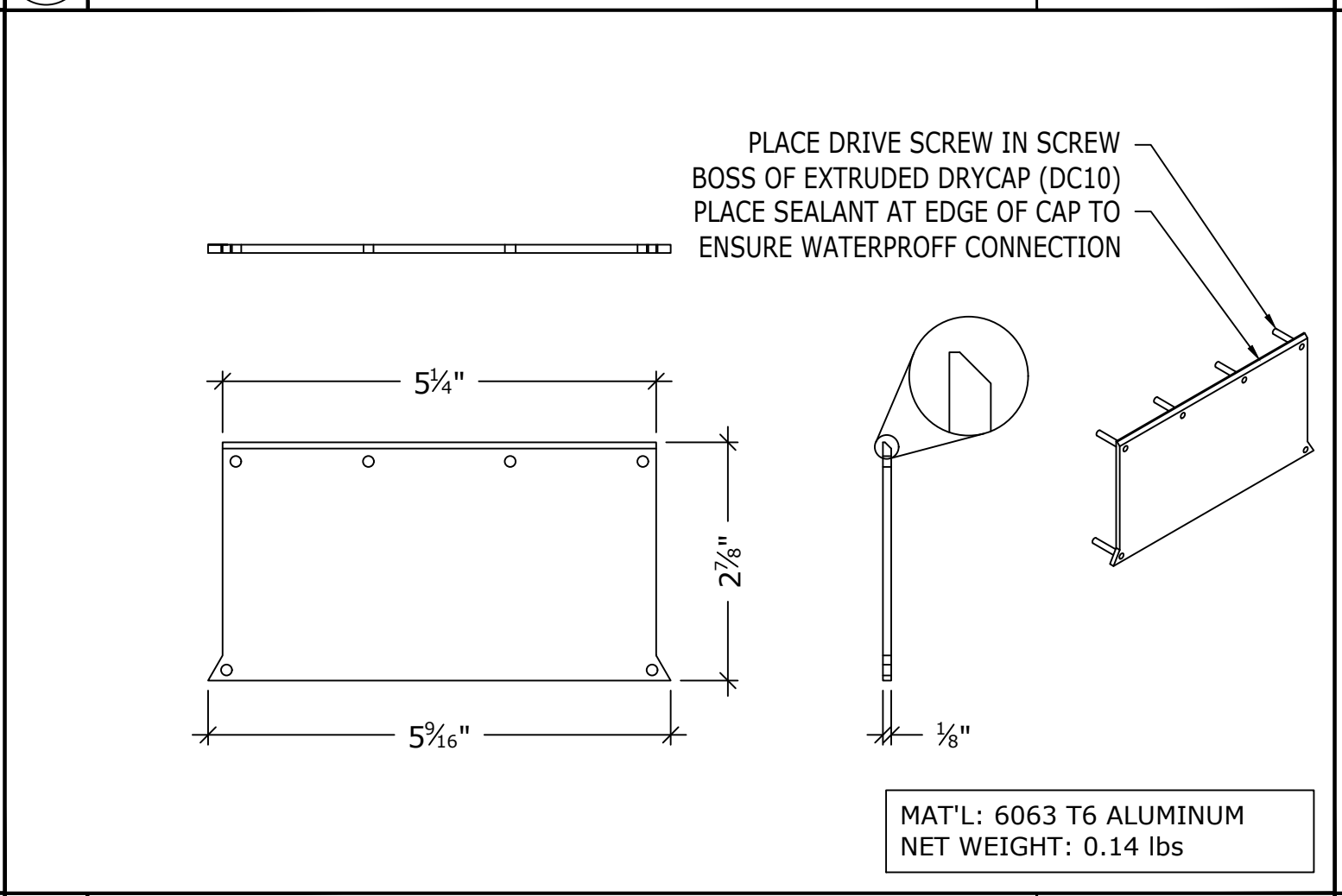
1 C34 GALVANIZED T-BRACKET SCALE: NTS



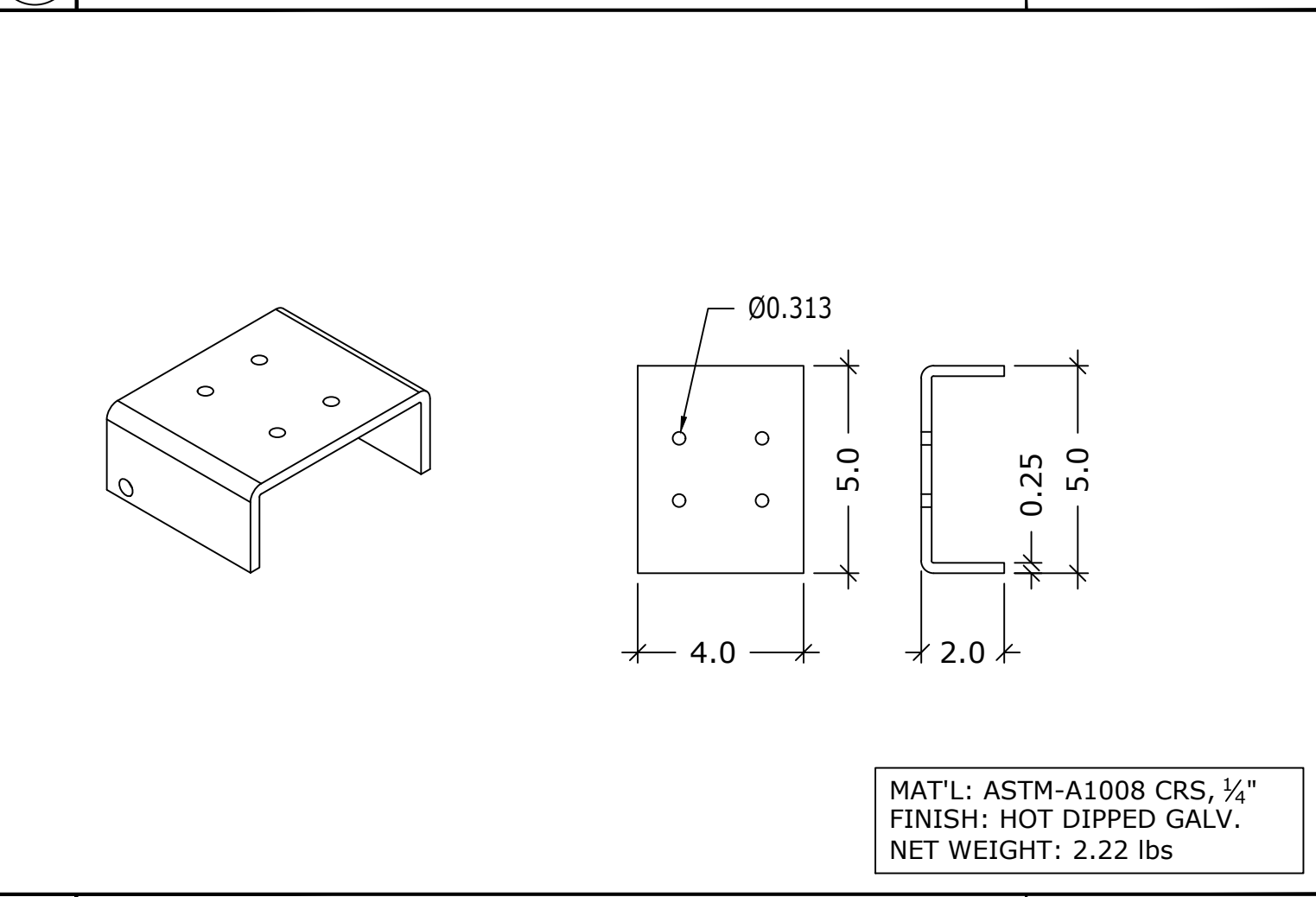
8 C43 SQUARE TO ROUND CONNECTOR ATTACHMENT SCALE: NTS



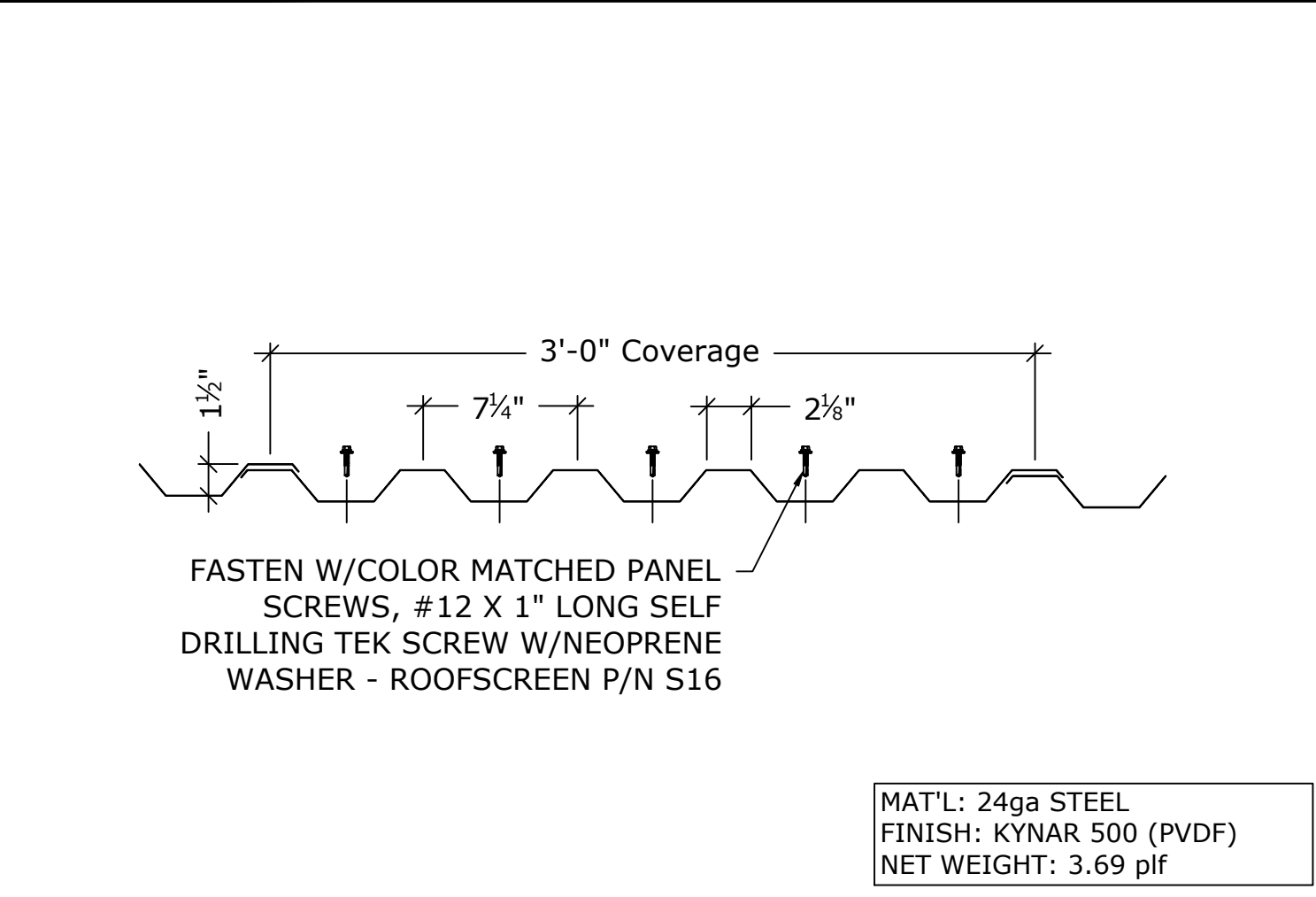
7 DC10 DRYCAP 5" SCALE: NTS



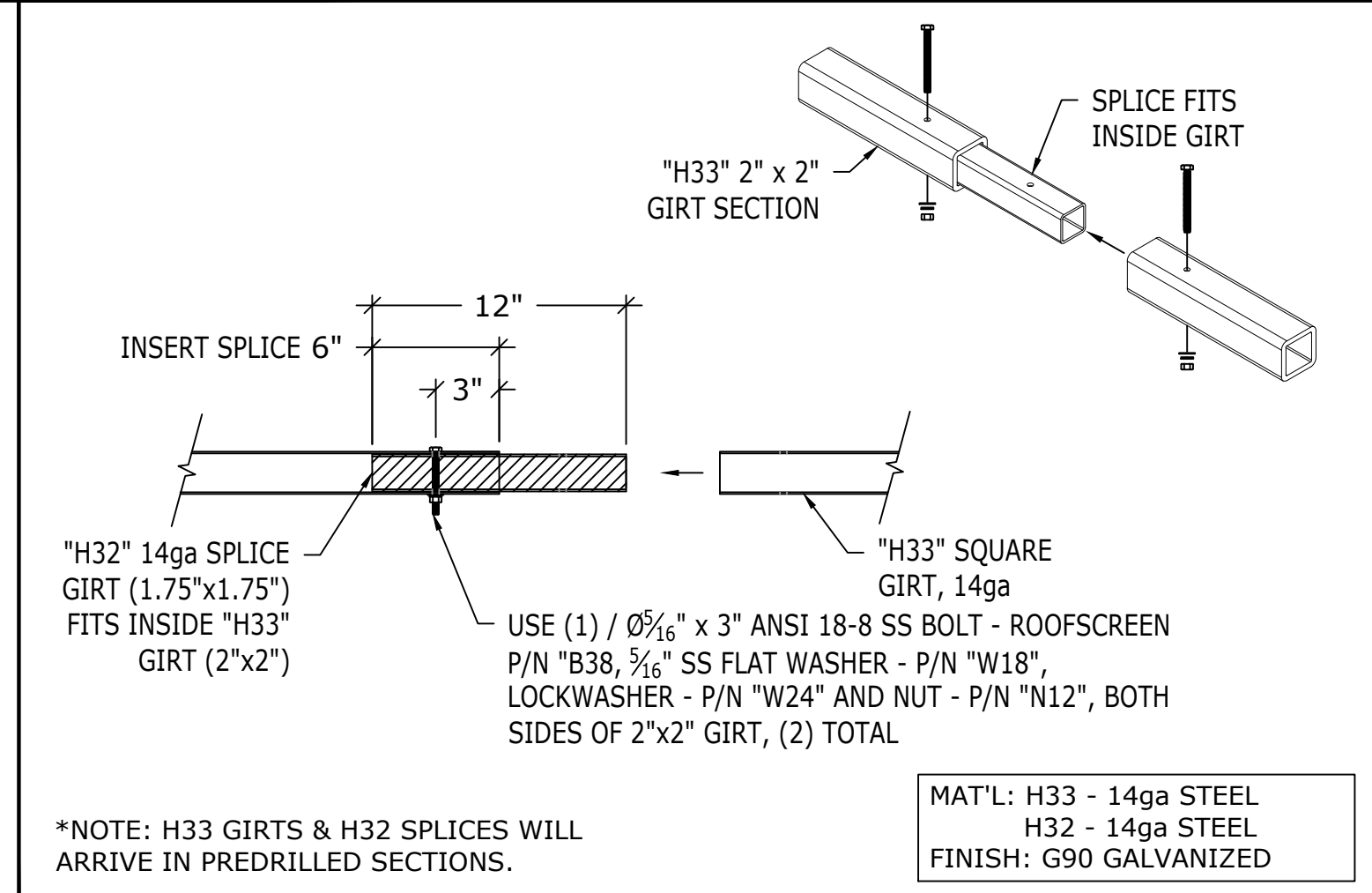
6 DC15 END CAP 5" SCALE: NTS



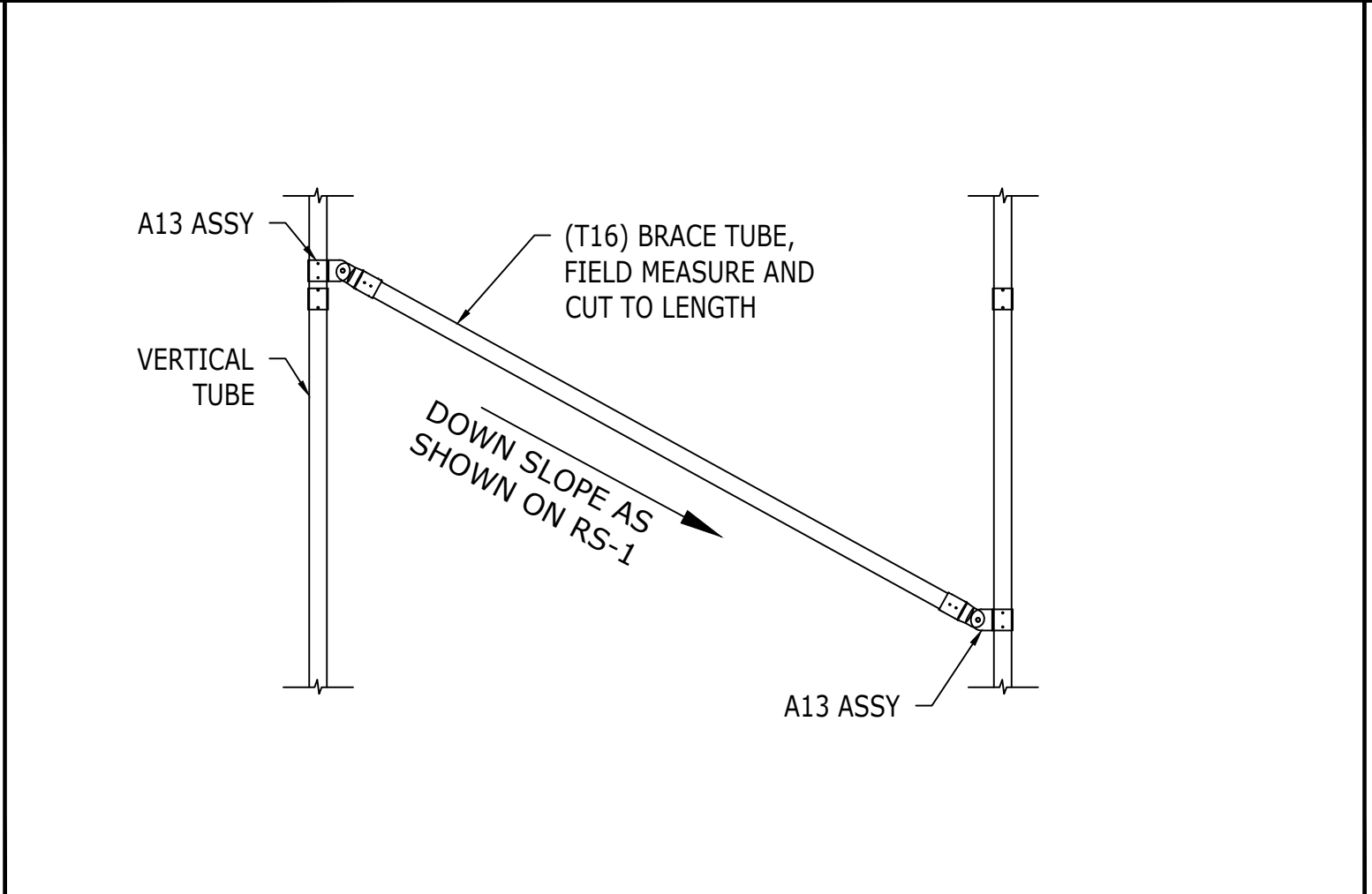
5 DC30 STEEL CLEAT 5" SCALE: NTS



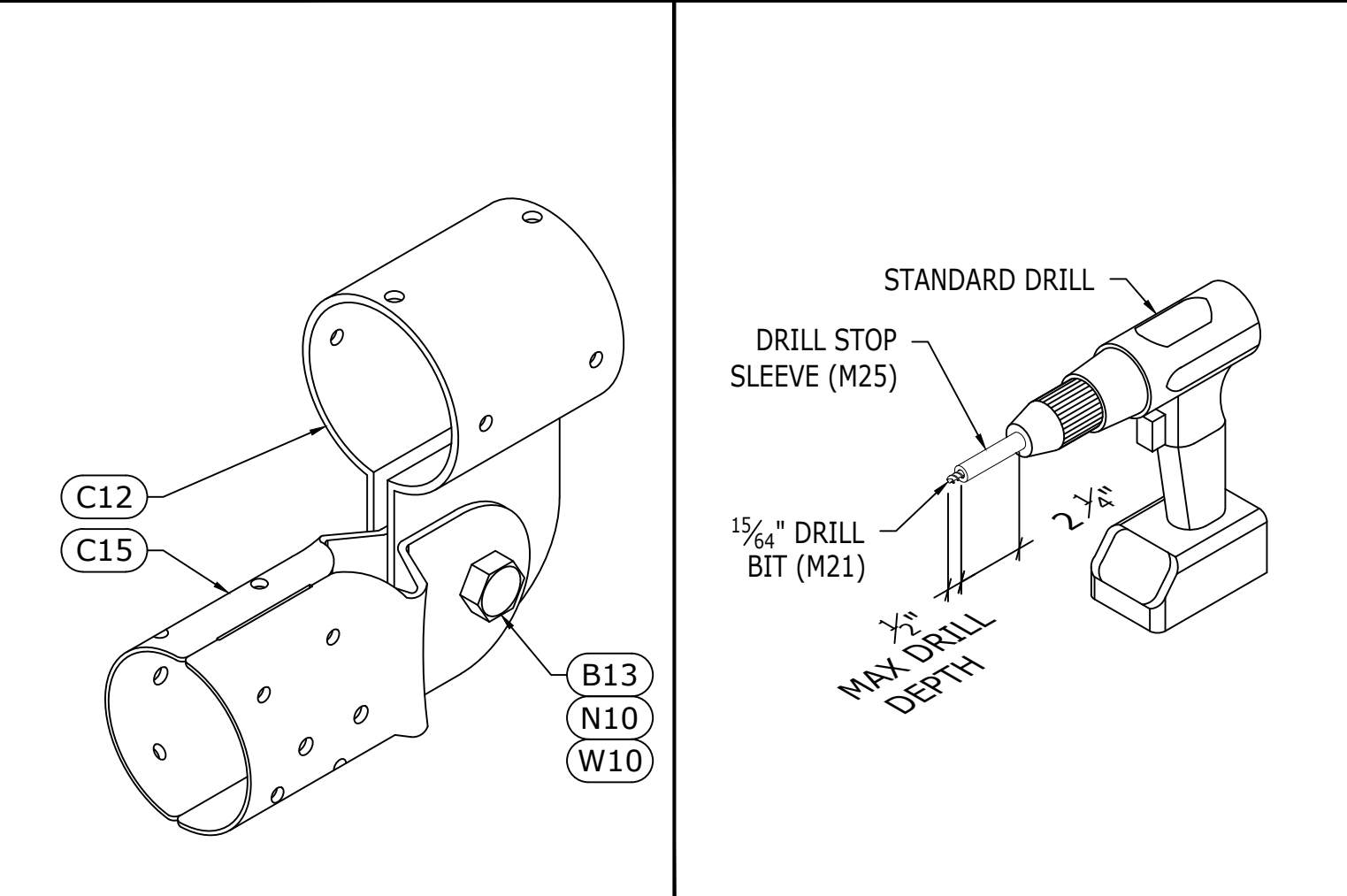
13 P10 7.2 RIB PANEL SCALE: NTS



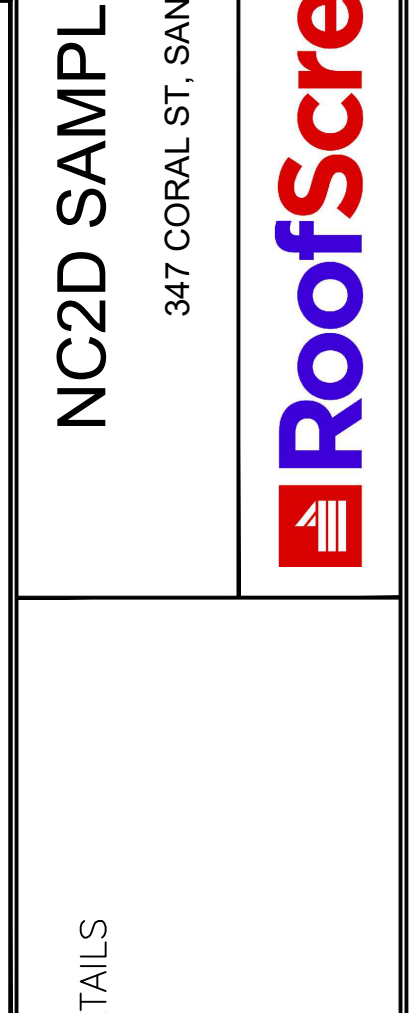
12 H33/H32 2" X 2" GIRT SPLICE SCALE: NTS



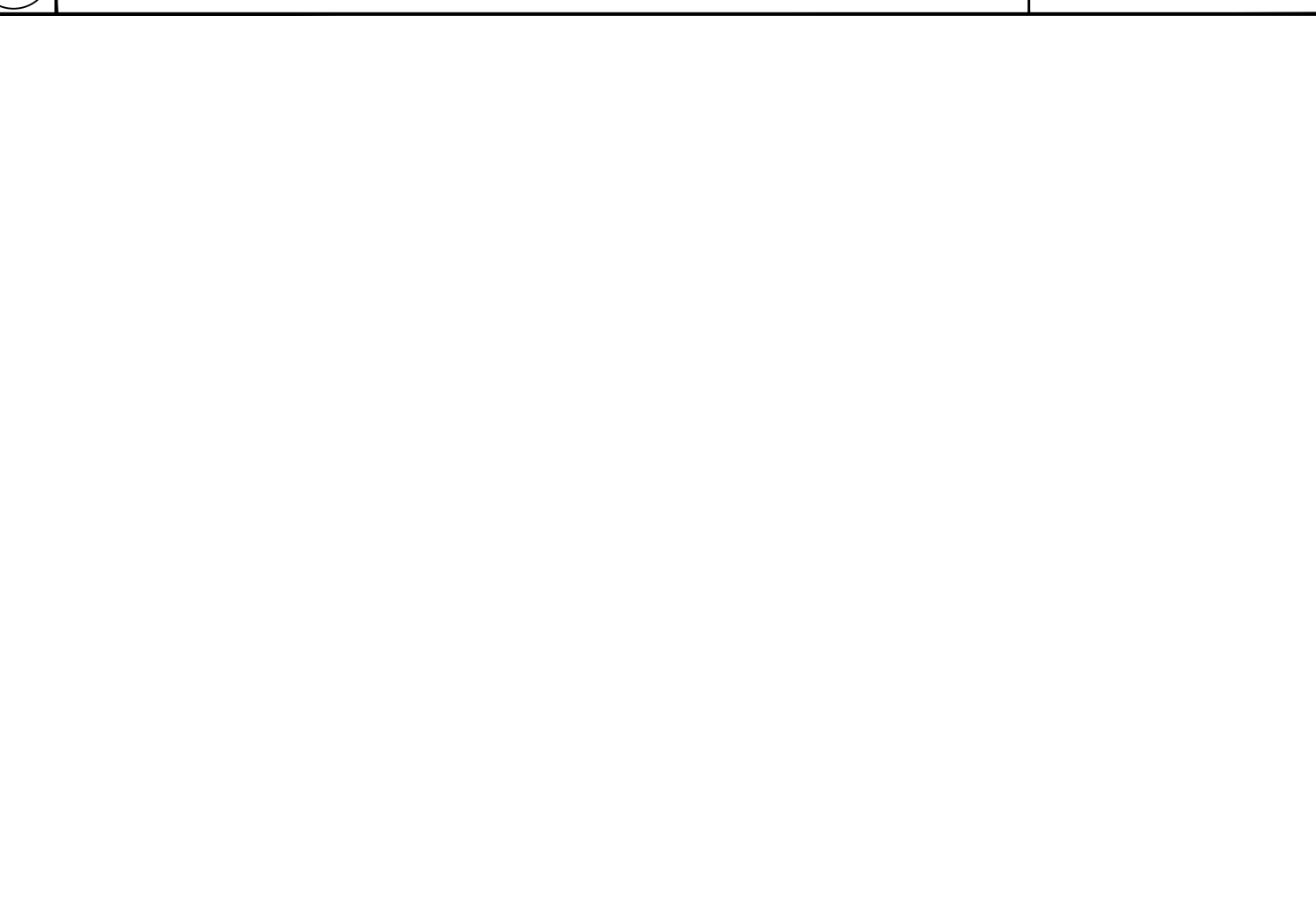
11 LATERAL BRACE ASSEMBLY SCALE: NTS



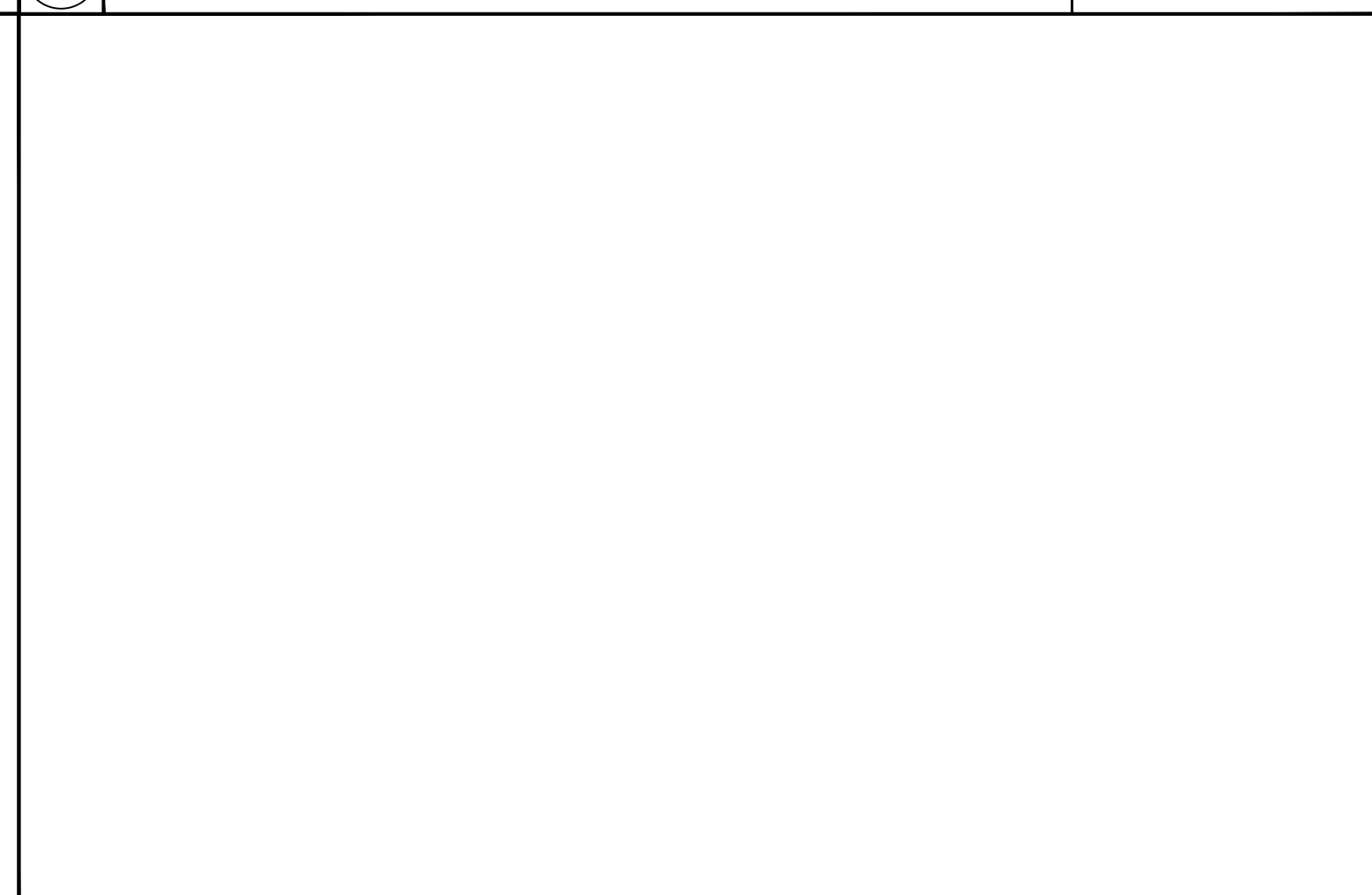
10 A13 2 1/2" FIELD, 2 1/2" END SCALE: NTS



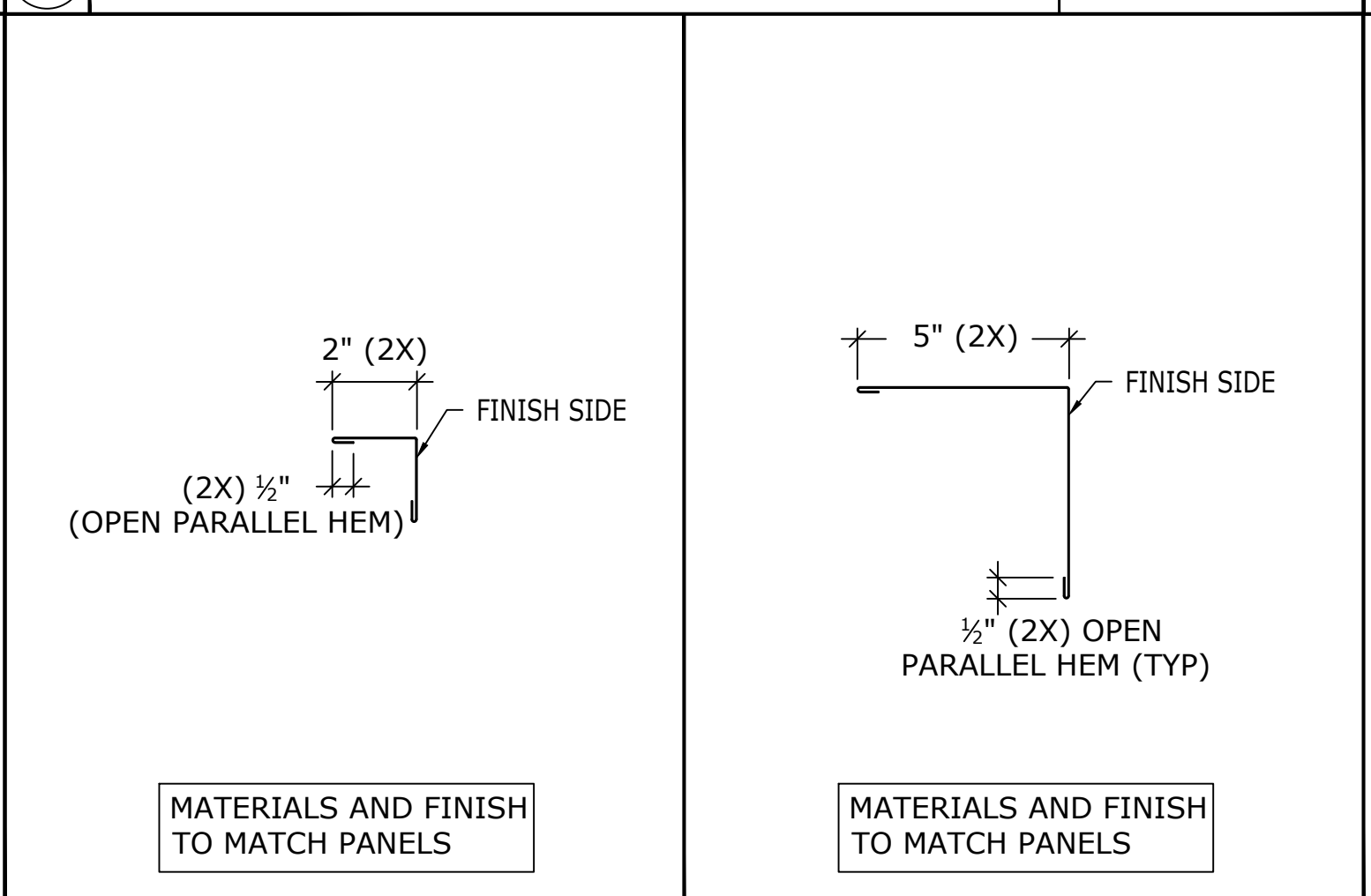
9 DRILL-STOP FOR DRYCAP SCALE: NTS



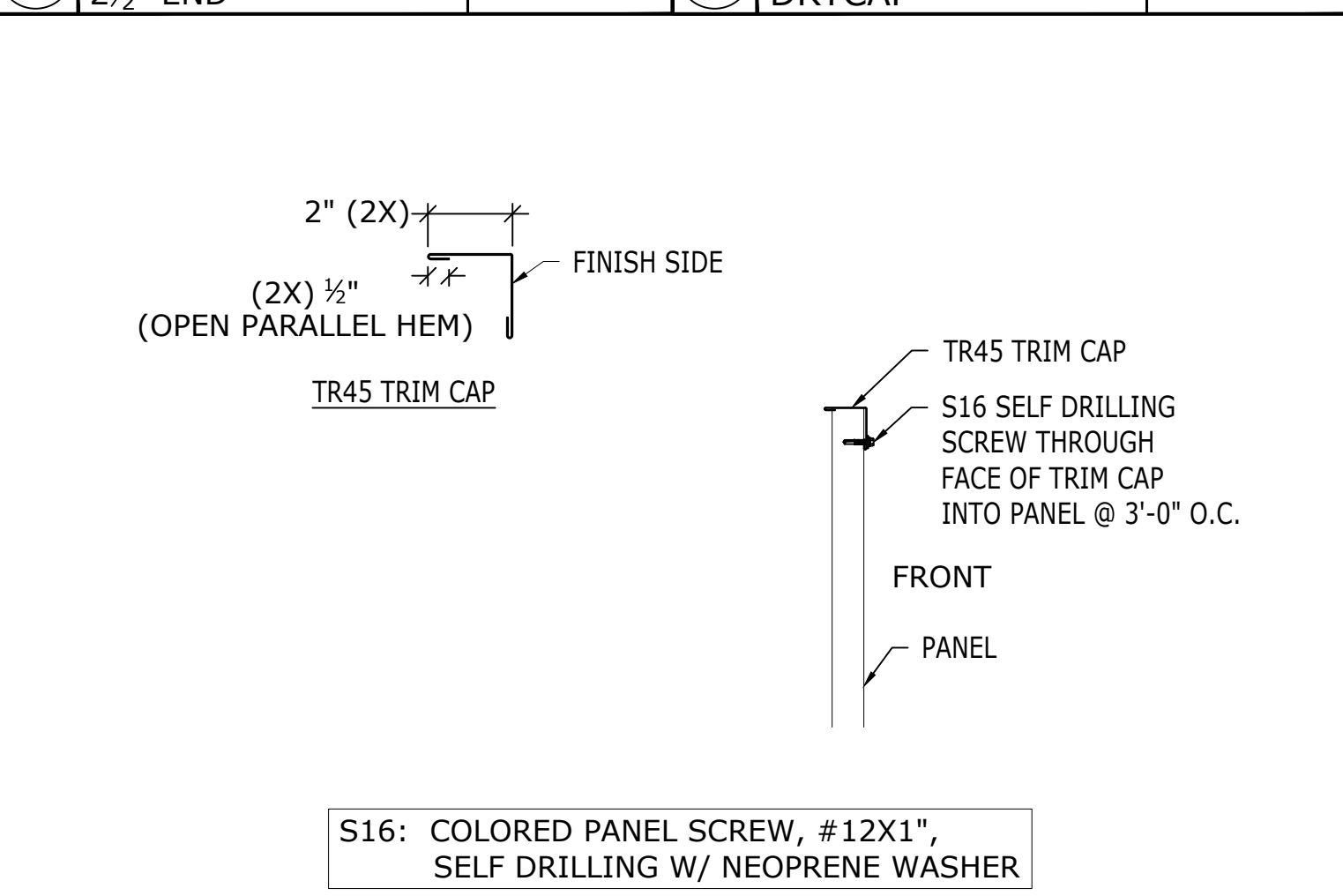
14 TRIM CAP (TR45), 7.2 RIB (P10) ATTACHMENT SCALE: NTS



16 END TRIM 2" X 2" (TR45) SCALE: NTS



15 OUTSIDE CORNER 5" X 5" (TR21) SCALE: NTS



17 TRIM CAP (TR45), 7.2 RIB (P10) ATTACHMENT SCALE: NTS

REV	DESCRIPTION	BY	DATE
1	CONSTRUCTION DOCUMENTS	SS	07/09/24
2			
3			
4			

REV	DESCRIPTION	BY	DATE
1	CONSTRUCTION DOCUMENTS	SS	07/09/24
2			
3			
4			

NC2D SAMPLE DRAWINGS
 347 CORAL ST. SANTA CRUZ, CA 95060
 ROOFSCREEN MFG., INC.
 347 CORAL STREET
 SANTA CRUZ, CA 95060
 INFO@ROOFSCREEN.COM

ROOFSCREEN PART/ASSEMBLY DETAILS
 PARTS/ASSEMBLY DETAIL DIMS IN INCHES U.N.O.
 DRAWN BY: SS
 CHECKED BY: KS
 JOB NUMBER: P5555
 SHEET
RS-3