

Captivating colors. Distinctive designs.

Architectural powder coatings color guide



We protect and beautify the world®

PPG: WE PROTECT AND BEAUTIFY THE WORLD®



A trusted global coatings leader

Operations in 75+ countries, with 100+ manufacturing facilities and ~50,000 employees



Renowned color expertise

Trend-setting palettes for home, auto and industry paired with unrivaled color matching



Commitment to sustainability

Over 38% of annual sales from sustainably advantaged products and processes



Dedication to innovation

3,500+ technical employees and \$463 MM average annual R&D investment



ABOUT THE PHOTOS

COVER/BACK

15, 35 and 55 Hudson Yards
New York, NY
PPG *Coraflon* Powder Coatings
Black Flower Texture (PCNT99112)
Photos: Max Touhey

INTRODUCTION

City Point BKLYN
Brooklyn, NY
PPG *Coraflon* Platinum Powder Coatings
White Terra Cotta (PCNT29308)
Photo: Kenneth Grant

POWDER LINEUP

The Bulletin Building
Philadelphia, PA
PPG *Coraflon* Powder Coatings
Galaxy Red (PCTT63114) + clear coat
Photo: Matt Krissel

COLOR CHIPS SPREAD

The Tower at PNC Plaza
Pittsburgh, PA
PPG *Coraflon* Sunstorm Powder Coatings
Gray Mica (custom color)
Photo: Tom Cwenaar

The color chips in this brochure cannot be considered totally accurate color matches, and are not to be used as approved standards. This document contains general information only and should not be construed as creating any warranties, express or implied. Please contact a PPG representative for additional information. The *PPG Logo*, *We protect and beautify the world*, *Coraflon*, *Envirocron* and *VARI-Cool* are registered trademarks of PPG Industries Ohio, Inc. The *IN Logo* is a registered trademark of LinkedIn Corporation. The *YouTube Icon* is a registered trademark of Google, LLC. ©2022 PPG Industries, Inc. All rights reserved. 06/22 PPG155



The PPG one-coat powder lineup

FGIA/AAMA 2605

PPG CORAFLON® Platinum FEVE fluoropolymer powder

USES: Curtain walls, storefronts, architectural extrusions, plate/brake metal and other monumental applications | GLOSS: 5-85 | SEACOAST: Yes*

A breakthrough, high-performance coating with an extended gloss range that can create looks never before possible with powder, including mineral tones and textures that mimic cement, stone, terracotta and anodized metal



Improved corrosion performance in one coat versus standard FEVE powders



20% higher transfer efficiency than standard FEVE powders



Broader gloss range than standard FEVE powders (5-85 vs. 25-70)

FGIA/AAMA 2604

PPG ENVIROCROn® HTE 04 ultra-durable polyester powder

USES: High-end, high-traffic residential and light commercial buildings
GLOSS: Matte, satin and gloss | SEACOAST: Yes*

Uses a more robust resin and pigment system than *Envirocron* HTE 03 powder coating for added durability and protection



Waste saving first-pass transfer efficiency rate up to 85%



Energy-saving, 10-minute cure at 350° F (177° C)**



Reduced coating film thickness while maintaining high quality**

FGIA/AAMA 2603

PPG ENVIROCROn® HTE 03 durable polyester powder

USES: Residential window/door frames, railings, trim, interior commercial applications
GLOSS: Matte, satin and gloss | SEACOAST: No

Provides good film integrity, impact and mar resistance and color control



* Powder primers available for additional protection in severe environments. ** Versus traditional powder coatings.



Powerful protection and performance. Distinctive finishes. Lasting beauty.

PPG powder coatings set the industry standard for durability, lasting beauty and exceptional finishes. Rigorously tested and engineered for the most demanding conditions, PPG powder coatings for architectural metal applications meet all levels of FGIA/AAMA performance standards and are available in one of the largest libraries of colors and special effect finishes in the industry.

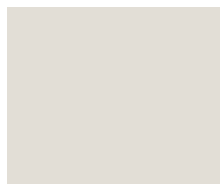


Powder options available specifically formulated without:

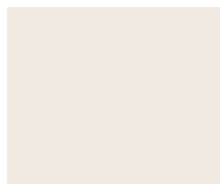
- Triglycidyl isocyanurate (TGIC)
- Perfluorooctanoic acid (PFOA)
- Fluorosurfactants
- Volatile organic compounds (VOCs)
- Hazardous air pollutants (HAPs)
- Living Building Challenge (LBC) Red List substances
- Substances of Very High Concern (SVHC)

CORAFLO PLATINUM SOLID COLORS

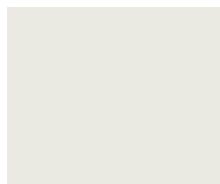
Standard Colors Are Highlighted. Minimum Order May Apply to Non-Standard Colors



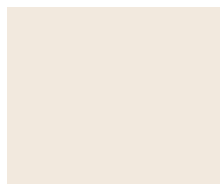
Bone White
PCNT88147P 20-35



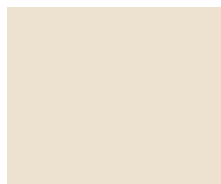
Bright White
PCNT88148P 30-45



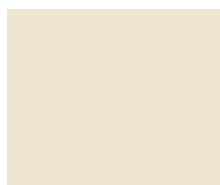
Snowdrift Sparkle Texture
PCNT85107P 2-6



Moondust Sparkle Texture
PCNT83101P 0-6



Potomac Stone
PCNT89202P 7-14



Colonial White
PCNT88149P 25-35



Fashion Gray
PCNT78166P 20-35



Eclipse Gray
PCNT78163P 25-40



Charcoal Gray
PCNT78133P 25-35



Black
PCNT98111P 40-60



Seawolf
PCNT28211P 20-35



Antique Bronze
PCNT28212P 20-35



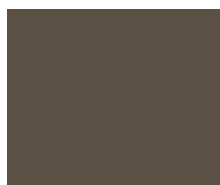
Gray Sparkle Texture
PCNT23138P 0-4



Fairview Taupe
PCNT28128P 25-35



Golden Chestnut
PCNT25210P 10-20



Medium Bronze
PCNT28214 20-30



Bronze
PCNT75137 10-20



Statuary Bronze
PCNT28216 25-45



Limestone Quarry
PCNT29364P 10-20



Rich Gold Sparkle
PCNT35105P 40-50



Bronzed Caramel
PCNT25211P 40-50



Terrazzo Tan
PCNT29363P 5-10



Brick Red
PCNT68116P 20-30



River Rouge Red
PCNT68117P 20-35



Aquatic
PCNT59117P 55-75



Bermuda Blue
PCNT58113P 25-35



Brigade Matte
PCNT59158P 10-20



High Salute
PCNT59159P 10-20

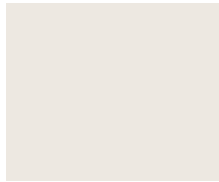


Paradise Found
PCNT49174P 10-20

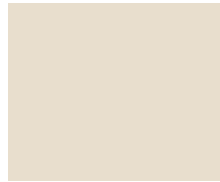


Castle Stone
PCNT49173P 10-20

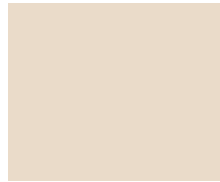
CORAFロン PLATINUM MICA COLORS



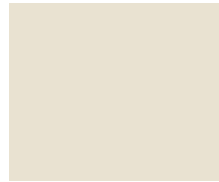
Delicate White
PCNT85112P 3-6



Blank Canvas
PCNT85111P 2-6



White Terra Cotta
PCNT29308P 60-75



White Ice Sparkle
PCNT83102P 4-8



Weathered Beige Texture
PCNT25187P 2-6



Bright Silver
PCNT75235P 30-40



Silver
PCNT75236P 15-25



Platinum Mica
PCNT75233P 15-25



Forged Steel
PCNT75243P 15-25



Stone Hearth
PCNT75244P 3-8



Digital Gray Texture
PCNT25188P 2-6



Hamptons Gray Texture
PCNT29329P 0-4



Windswept Beach Sparkle
PCNT73144P 2-6



Virtual Sand
PCNT23136P 3-7



Champagne Bronze
PCNT25122P 20-35



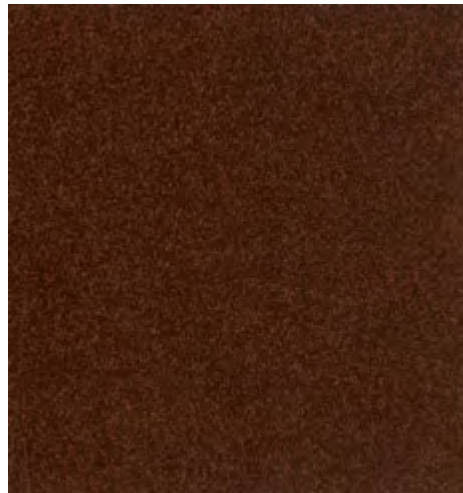
Bronzed Ochre
PCNT25216P 20-30



Crypto Gold Sparkle
PCNT35106P 40-50



Canyon Sparkle
PCNT25186P 60-70



Urban Rust Speckle
PCNT24111P 1-3



Northern Walnut Texture
PCNT23134P 3-7



White Sage
PCNT85109P 7-14



Olive Sprig
PCNT43103P 7-15



Woodland Sage Texture
PCNT49163P 3-7



Smoked Khaki Texture
PCNT49162P 3-7



Techno Blue Texture
PCNT59152P 3-7

TO ORDER SAMPLES
visit requestppg.com
or call 800-258-6398.

While the color codes shown are for Corafロン Platinum powder coatings, the majority are available for Envirocron 03 and 04 powder coatings as well (codes will vary). Ask your PPG representative for information.

CORAFLOM PLATINUM ANODIZED, SPECIALTY AND COLORFUL SELECTIONS



White Stone Sparkle Texture
PCNT75231P 2-6



Americana White
PCNT85110P 20-30



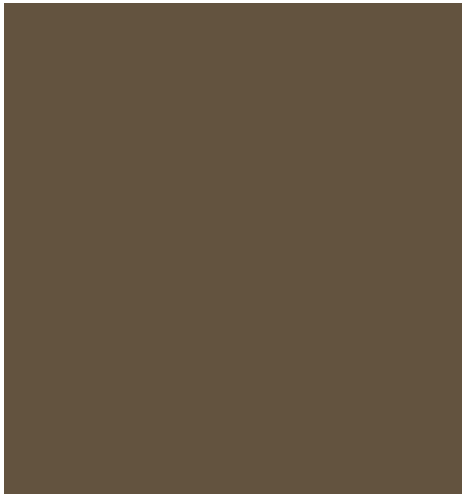
Burnished Rose Texture
PCNT65108P 35-45



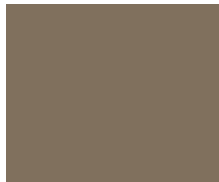
Pure Clear Anodized
PCNT75223P 13-23



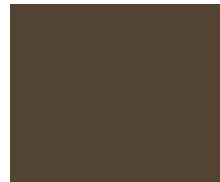
Anodic Clear
PCNT75155P 25-35



Champagne Anodized
PCNT25176P 10-16



Aged Gold Anodized
PCNT25177P 12-18



Anodized Bronze
PCNT25178P 9-15



Eco Bronze Anodized
PCNT25179P 7-13



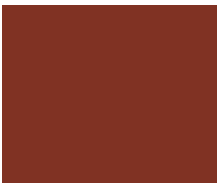
Renew Black Anodized
PCNT99147P 2-6



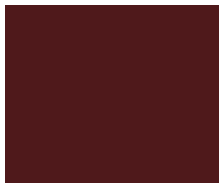
Lava Rock
PCNT23141P 45-55



Hammered Copper
PCNT25217P 40-50



Brick Red Glaze
PCNT69131P 40-50



Galaxy Red
PCTT63114 80-90



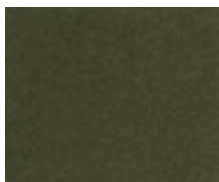
Forged Pewter
PCNT75242P 40-50



PPG VARI-COOL® Great Barrier Reef
PCNT55106P 15-25



Grassy Plains Texture
PCNT45103P 2-6



PPG VARI-COOL® Harvest Patina
PCNT45104P 20-30

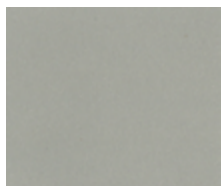


Saffron Yellow
PCNT39119P 25-35

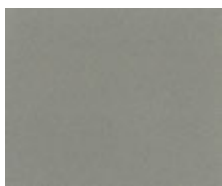


High Gloss Cobalt Blue
PCNT59150P 80+

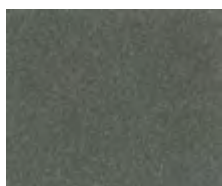
CORAFLOM PLATINUM TEXTURE / SPARKLE COLORS



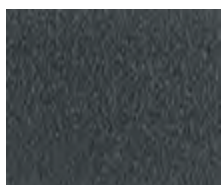
Platinum
PCNT75153P 20-30



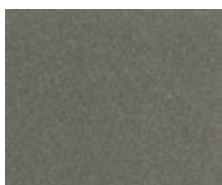
Arcadia Silver
PCNT75154P 10-20



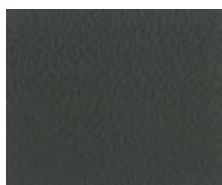
Silverstorm
PCNT75164P 15-30



Westcott Navy Speckle
PCNT74102P 3-9



Pewter
PCNT75163P 15-30



Graphite Texture
PCNT73143P 4-8

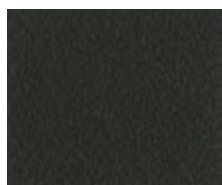
Iron Gray
PCNT74105P 1-4



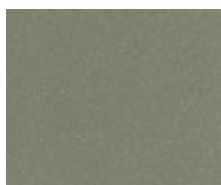
Cosmic Gray Mica
PCNT75132P 25-35



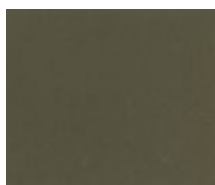
Graphite Gray
PCNT75156P 35-45



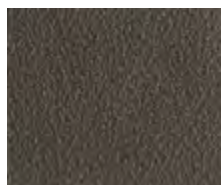
Black Flower Texture
PCNT99112P 1-4



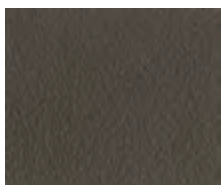
Champagne
PCNT75159P 20-35



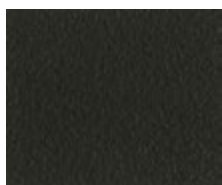
Light Bronze
PCNT25129P 15-35



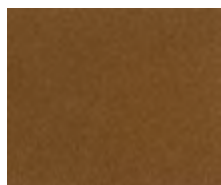
Oswego Tea Matte Texture
PCNT29362P 18-25



Marbled Granite Texture
PCNT23139P 2-6



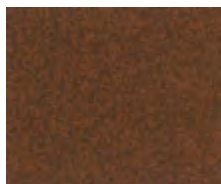
Bronze Texture
PCNT29111P 7-23



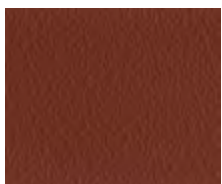
Bright Copper Metallic
PCNT25227P 30-45



Vintage Copper Texture
PCNT29341P 3-7



Speckled Spice
PCNT24110P 1-3



Fired Brick Texture
PCNT69134P 3-7



Black Rust
PCNT94100P 10-20



Interstate Blue
PCNT59129P 20-40



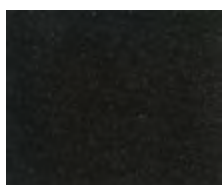
Skybridge
PCNT55105P 3-6



Dusty Aqua
PCNT43102P 10-15



Vining Ivy Texture
PCNT43104P 5-10



Black Magic
PCNT93105P 20-35



We protect and beautify the world®

IFS Powder Coatings

Architectural Color Collection



IFS Coatings for Architectural Applications

IFS has a world class range of powder coatings designed to protect and decorate architectural metal to the very highest standards. Our architectural powder coatings are tough, weatherable, and meet and exceed each of the AAMA performance specifications, ensuring every level of exterior durability is available.

The Architectural Color Palette

The IFS Architectural Color Collection showcases just some of the colors available in the IFS range, from classic solid shades, to fine metallics and even anodic styles. We also understand that unique projects need unique colors. With that in mind, the free **IFS Color Matching Service** allows you to get the exact shade you are looking for in an environmentally responsible, durable coating. We will analyze the shade using the latest color matching technology and create a color for you to approve. What's more, you can also change the gloss, or add metallic/mica or textures to the product. Talk to your IFS architectural representative for more information on our exceptional color matching capabilities.

The IFS Architectural Color Matching Service

- Free custom color creation available
- Available in standard polyester, super durable and fluoropolymer technology
- Change the gloss, add metallics or textures
- Industry leading color matching times
- Sample panels available free of charge
- Small batches available, perfect for prototypes or one off pieces



With any coating, powder or liquid, there are some limitations on what is achievable at the higher levels of exterior durability. Quite simply, the pigments for some shades (for example, bright red) that will offer the durability required for these specifications, are not available. However there is a vast range of colors that are available, and will meet the exterior durability demands of the high level specifications. Similarly, not all gloss levels or metallic effects can be achieved at an AAMA 2605 level. Talk to your IFS architectural advisor for advice.

AAMA Specification	AAMA 2603	AAMA 2604	AAMA 2605
IFS Product	IFS 300SP	IFS 400SD	IFS 500FP
Product chemistry	Standard Polyester	Super Durable Polyester	100% FEVE Fluoropolymer (70% PVDF liquid equivalent)
Warranty*	No warranty	10 year warranty	20 year warranty

*Warranty supplied when applied by an IFS Registered Applicator to aluminum.

The IFS architectural range has been used on a vast array of architectural applications, from residential windows and doors, commercial store front and retail interiors, to curtain wall, louvers, scrims and screens on skyscrapers and monumental buildings.

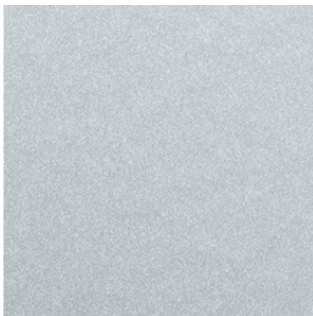
The IFS Architectural Color Collection

IFS architectural coatings offer a combination of great aesthetics, toughness, durability, cost effectiveness and are the environmentally responsible choice. All of the colors shown on this card are available in AAMA 2603, 2604 and 2605 level products, so no matter what the project demands, we've got you covered. IFS 400SD, our super durable architectural product provides great exterior protection and improved color and gloss retention over a standard polyester product, while IFS 500FP, our world class 100% FEVE offers the ultimate in long term durability, color and gloss retention and scratch resistance. For more information on the strict performance tests that IFS 400SD and IFS 500FP meet and exceed, please talk to your IFS representative.

IFS 500FP codes start with an "F" and meet and exceed the performance requirements of AAMA 2605
IFS 400SD codes start with an "S" and meet and exceed the performance requirements of AAMA 2604



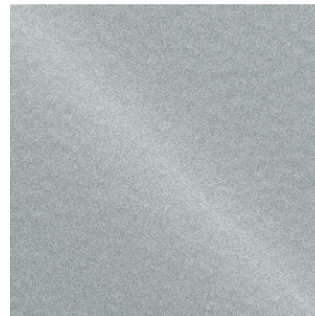
IFS ARCHITECTURAL ANODICS



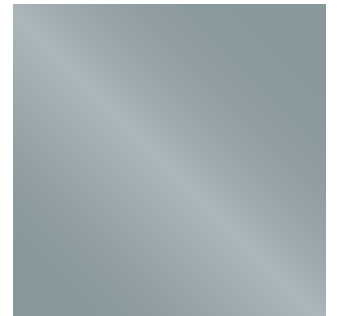
Anodized Silver
FRSL 94542
SRMS 95339



Silver Sparkle
FRSS 93652
SRSL 95572



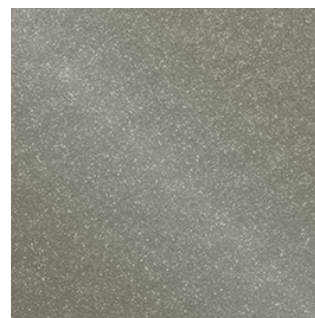
Matte Platinum
FRML 95458
SRSM 95573



Steel Blue
FRSL 95577
SRSL 95574

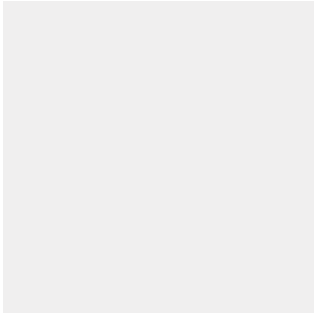


Dark Bronze
FRSL 95578
SRSL 95575

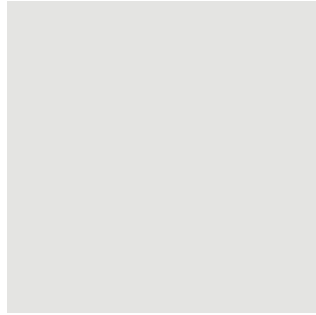


Medium Bronze
FRSL 95579
SRSL 95576

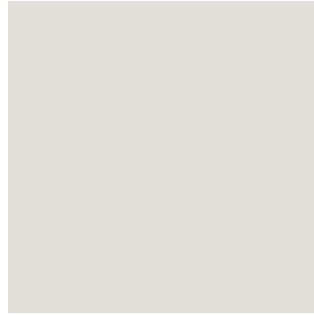
IFS ARCHITECTURAL SOLIDS



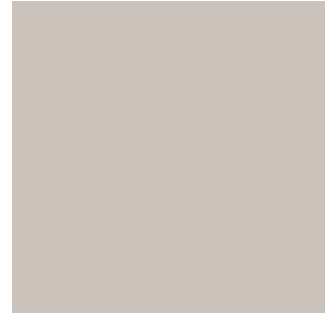
Apollo White
FRSL 82908
SRSL 82519



Bone White
FRSL 82909
SRSL 82520



Ivory
FRSL 46646
SRSL 45891



Sandstone
FRSL 46647
SRSL 45892



Seawolf
FRSL 46645
SRSL 46636



Fashion Gray
FRSL 74652
SRSL 74008



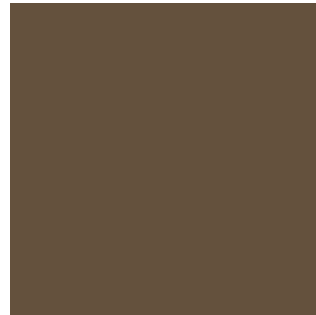
Colonial Gray
FRSL 74653
SRSL 74009



Military Light Blue
FRSL 21709
SRSL 21708



Burgundy
FRSL 62496
SRSL 62487



Antique Bronze
FRSL 46648
SRSL 45893



Black
FRSL 11390
SRSL 11386



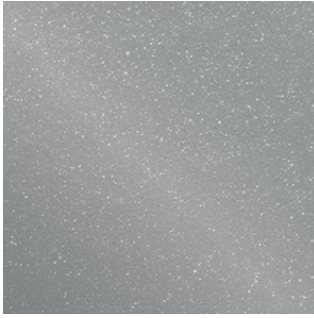
Charcoal
FRSL 74654
SRSL 74007



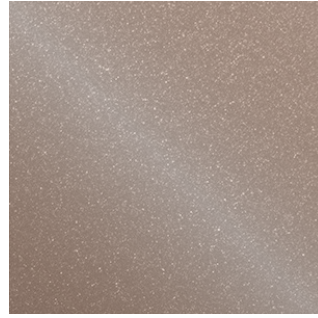
Hartford Green
FRSL 32872
SRSL 32545



IFS ARCHITECTURAL METALLICS



Classic Platinum
FRSL 96595
SRSS 95565



Champagne
FRSL 96596
SRSL 95566



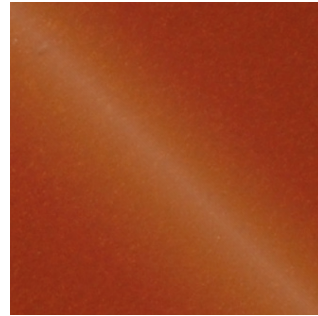
Pewter
FRSL 96597
SRSL 95567



Light Bronze
FRSL 96599
SRSL 95569



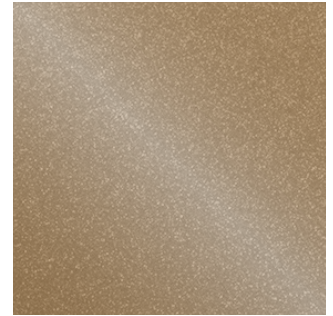
Cosmic Gray
FRSL 96598
SRSL 95568



Copper Penny
FRML 90502
SRML 99043



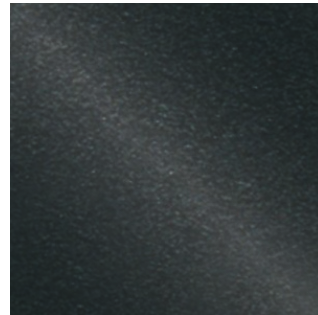
Stormy Silver
FRML 90488
SRML 90489



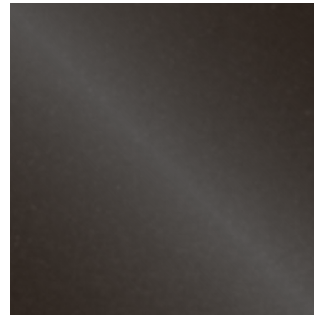
Gold Nugget
FRSL 95571
SRSS 90464



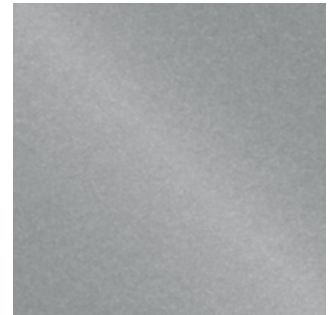
Industrial Bronze
FRML 90480
SRML 90482



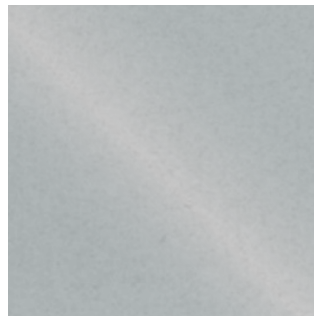
Fine Texture Black Chrome
FRML 90501
SRML 90503



Warm Bronze
FRML 90494
SRML 90499



Sunlit Silver
FRML 90484
SRML 90487



Timeless Silver
FRML 90492
SRML 90493



IFS 500FP codes start with an "F" and meet and exceed the performance requirements of AAMA 2605
IFS 400SD codes start with an "S" and meet and exceed the performance requirements of AAMA 2604